



Connells

Meadow Walk  
Henlow





## Property Description

Offered to the market is this fabulous four bedroom town house in this highly sought after modern built development.

Situated in the picturesque village of Henlow and arranged over three floors this property comprises of a good sized living space, four bedrooms and two bathrooms. Externally there is a lovely garden, a garage and an allocated parking space.

This home offers great local amenities and countryside walks as well as being located within walking distance of Arlesey station that has direct links in to London Kings Cross.

## Ground Floor

### Entrance Hall

Wood effect floor, radiator to the side and storage cupboard.

### Cloakroom

Wash hand basin with mixer tap, W/C, radiator to the side and finished with tiled flooring.

### Lounge/Diner

17' 2" recess x 13' 3" ( 5.23m recess x 4.04m )

Double glazed doors to the rear, radiator to the front and TV points.

### Kitchen

12' 5" x 6' 4" ( 3.78m x 1.93m )

Double glazed window to the front. Modern fitted kitchen comprising of a range of wall and base units, quartz worktop, induction hob and extractor, integrated dish washer, fridge/freezer and space for washing machine. Tiled splashbacks, flooring and spotlights.

## First Floor

### Landing

Access to bedrooms one & two, storage cupboard and stairs to the second floor.

### Bedroom One

13' 6" recess x 11' ( 4.11m recess x 3.35m )  
'L' shaped room, double glazed window, radiator to the front and two double wardrobes.

### En Suite

Wash hand basin with mixer tap, W/C, tiled shower cubicle, heated towel rail to rear, tiled floor and an extractor fan.

### Bedroom Two

13' 3" x 9' 4" ( 4.04m x 2.84m )  
Double glazed window and radiator to the rear.

## Second Floor

### Bedroom Three

13' 4" recess x 11' 8" recess ( 4.06m recess x 3.56m recess )  
Double glazed window and radiator.

### Bedroom Four

13' 3" x 6' 11" Recess ( 4.04m x 2.11m Recess )  
Two double glazed skylights.

## Bathroom

Three piece suite comprising of a panel bath with shower, W/C, wash hand basin and mixer tap, heated towel rail to the side, tiled floor and extractor fan.

## Outside

### Front Garden

Patio area, gated entrance and over looks a communal green.

### Rear Garden

Plant beds to the side, artificial grass and shrubs.

## Garage

With allocated parking in front.



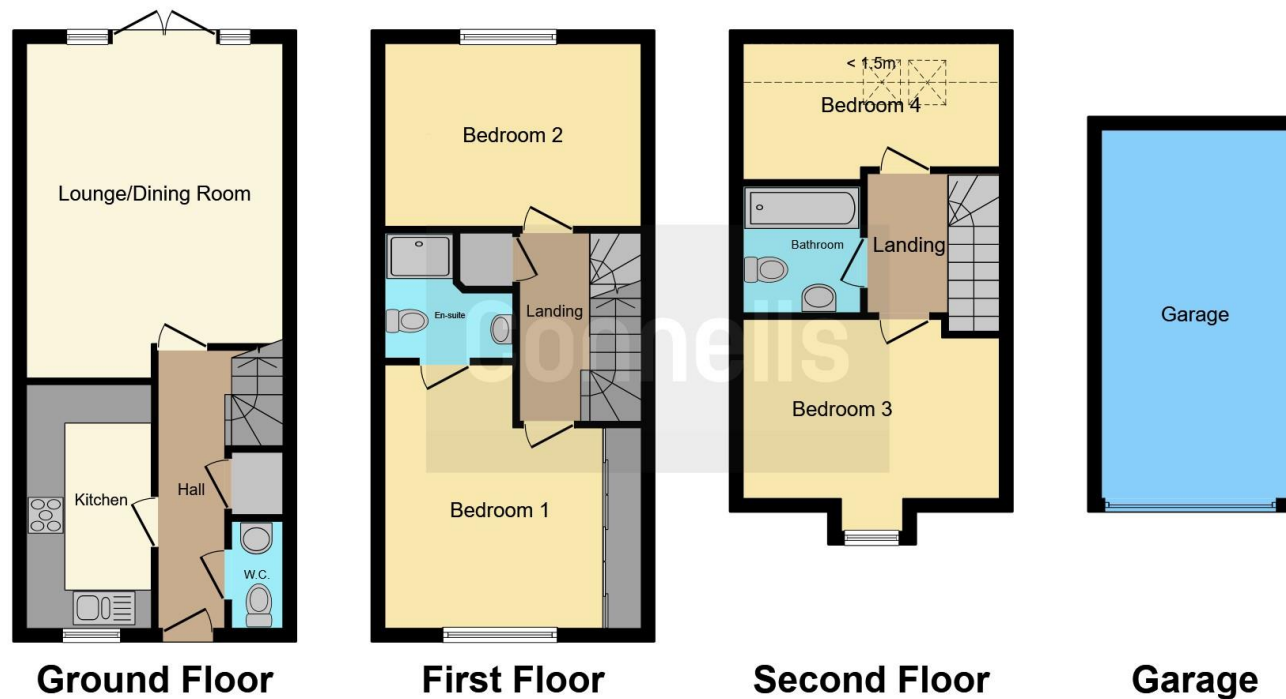












This floor plan is for illustrative purposes only. It is not drawn to scale. Any measurements, floor areas (including any total floor area), openings and orientation are approximate. No details are guaranteed, they cannot be relied upon for any purpose and they do not form part of any agreement. No liability is taken for any error, omission or misstatement. A party must rely upon its own inspection(s). Powered by [www.focalagent.com](http://www.focalagent.com)

To view this property please contact Connells on

**T 01462 437 666**  
**E [hitchin@connells.co.uk](mailto:hitchin@connells.co.uk)**

14 High Street  
 HITCHIN SG5 1AT

EPC Rating: B    Council Tax  
 Band: D

Tenure: Freehold

**view this property online** [connells.co.uk/Property/HIT308142](http://connells.co.uk/Property/HIT308142)



1. MONEY LAUNDERING REGULATIONS Intending purchasers will be asked to produce identification documentation at a later stage and we would ask for your co-operation in order that there will be no delay in agreeing the sale. 2. These particulars do not constitute part or all of an offer or contract. 3. The measurements indicated are supplied for guidance only and as such must be considered incorrect. Potential buyers are advised to recheck measurements before committing to any expense. 4. We have not tested any apparatus, equipment, fixtures, fittings or services and it is in the buyers interest to check the working condition of any appliances.

Connells Residential is registered in England and Wales under company number 1489613, Registered Office is Cumbria House, 16-20 Hockliffe Street, Leighton Buzzard, Bedfordshire, LU7 1GN. VAT Registration Number is 500 2481 05.

**See all our properties at [www.connells.co.uk](http://www.connells.co.uk) | [www.rightmove.co.uk](http://www.rightmove.co.uk) | [www.zoopla.co.uk](http://www.zoopla.co.uk)**

Property Ref: HIT308142 - 0004