



Connells

Highover Way
Hitchin



Property Description

This fabulous two bedroom home is offered to the marketing in stunning condition throughout. The current vendors have remodelled the property to create a fabulous open plan living space with porcelain tiling throughout and high specification fixtures and fittings. Upstairs are two double bedrooms and a well fitted family bathroom. Outside is a lovely landscaped rear garden and allocated parking.

Highover Way is a popular cul-de-sac location and is situated close to excellent schooling, the mainline station and beautiful open countryside.

Ground Floor

Entrance Hall

Door to front and stairs leading to first floor.

Lounge

13' 7" max x 13' 4" (4.14m max x 4.06m)

Double glazed window and door to front aspect, understairs storage cupboard, TV point and porcelain tiled flooring. Open to kitchen diner.

Kitchen Diner

13' 4" x 9' 7" (4.06m x 2.92m)

Fully fitted kitchen with double glazed window and door to rear aspect, a range of wall and base units, sink and drainer, work surfaces with splashback. Integrated appliances including fridge/freezer, washing machine, dishwasher, microwave, electric oven and hob with cooker hood over. Cupboard housing boiler, spotlights and porcelain tiled flooring.

First Floor

Landing

Loft access, airing cupboard and storage with space for tumble dryer.

Bedroom One

11' 4" to wardrobes x 10' 1" (3.45m to wardrobes x 3.07m)

Two double glazed windows to front aspect, fitted wardrobes, spotlights and radiator.

Bedroom Two

10' 2" x 6' 10" plus recess (3.10m x 2.08m plus recess)

Double glazed window to rear aspect, built-in wardrobe, spotlights and radiator.

Bathroom

Double glazed window to rear aspect, wash hand basin, tiled shower cubicle, WC, extractor fan, spotlights, wood effect flooring and heated towel rail.

Outside

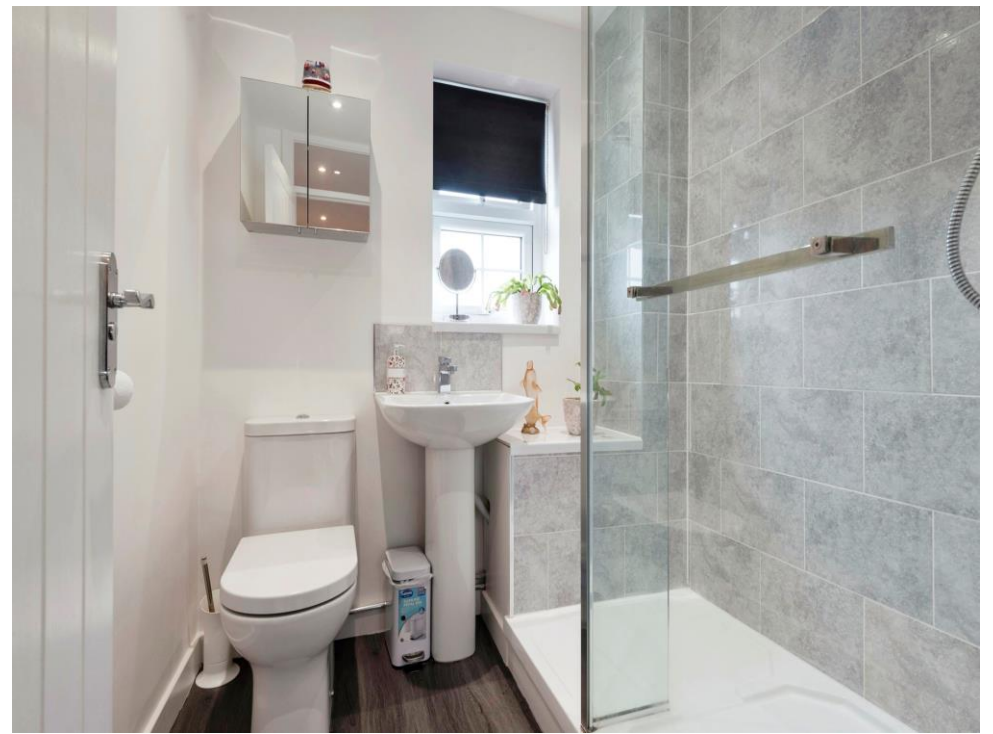
Rear Garden

A lovely rear garden laid to lawn with patio area, pergola and large storage shed.

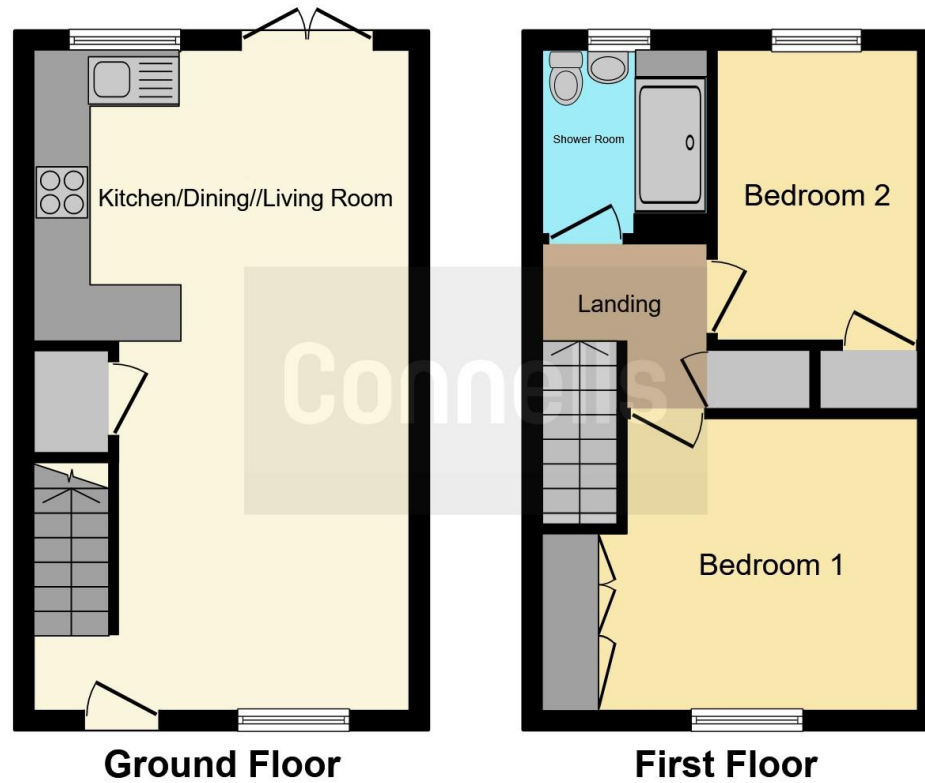
Parking

Allocated space.









This floor plan is for illustrative purposes only. It is not drawn to scale. Any measurements, floor areas (including any total floor area), openings and orientation are approximate. No details are guaranteed, they cannot be relied upon for any purpose and they do not form part of any agreement. No liability is taken for any error, omission or misstatement. A party must rely upon its own inspection(s). Powered by www.focalagent.com

To view this property please contact Connells on

T 01462 437 666
E hitchin@connells.co.uk

14 High Street
 HITCHIN SG5 1AT

EPC Rating: D

view this property online connells.co.uk/Property/HIT307475

Tenure: Freehold



1. MONEY LAUNDERING REGULATIONS Intending purchasers will be asked to produce identification documentation at a later stage and we would ask for your co-operation in order that there will be no delay in agreeing the sale. 2. These particulars do not constitute part or all of an offer or contract. 3. The measurements indicated are supplied for guidance only and as such must be considered incorrect. Potential buyers are advised to recheck measurements before committing to any expense. 4. We have not tested any apparatus, equipment, fixtures, fittings or services and it is in the buyers interest to check the working condition of any appliances.

Connells Residential is registered in England and Wales under company number 1489613, Registered Office is Cumbria House, 16-20 Hockliffe Street, Leighton Buzzard, Bedfordshire, LU7 1GN. VAT Registration Number is 500 2481 05.

See all our properties at www.connells.co.uk | www.rightmove.co.uk | www.zoopla.co.uk

Property Ref: HIT307475 - 0003