



Connells

West Lane  
Pirton Hitchin



### Property Description

Offered to the market is this two bedroom Victorian terraced property in the highly sought after village of Pirton.

This property briefly comprises of a lounge, fitted kitchen, family bathroom and two good sized bedrooms. This home is well presented throughout and makes an ideal first time buy.

### Ground Floor

#### Lounge

11' x 10' plus alcove ( 3.35m x 3.05m plus alcove )

Double glazed window, door and radiator to front aspect and TV point.

#### Kitchen

8' plus alcove x 8' ( 2.44m plus alcove x 2.44m )

Double glazed window to rear aspect, fitted kitchen with a range of wall and base units, space for white goods, sink/drainage and tiled splashbacks. Finished with tiled flooring and understairs storage.



## First Floor

### Landing

Stairs to first floor with access to both bedrooms and radiator to the rear.

### Bedroom One

11' 1" x 10' plus alcove ( 3.38m x 3.05m plus alcove )

Double glazed window and radiator to front aspect, loft access.

### Bedroom Two

8' 6" x 8' 1" ( 2.59m x 2.46m )

Double glazed window to rear and radiator to front aspect.

### Bathroom

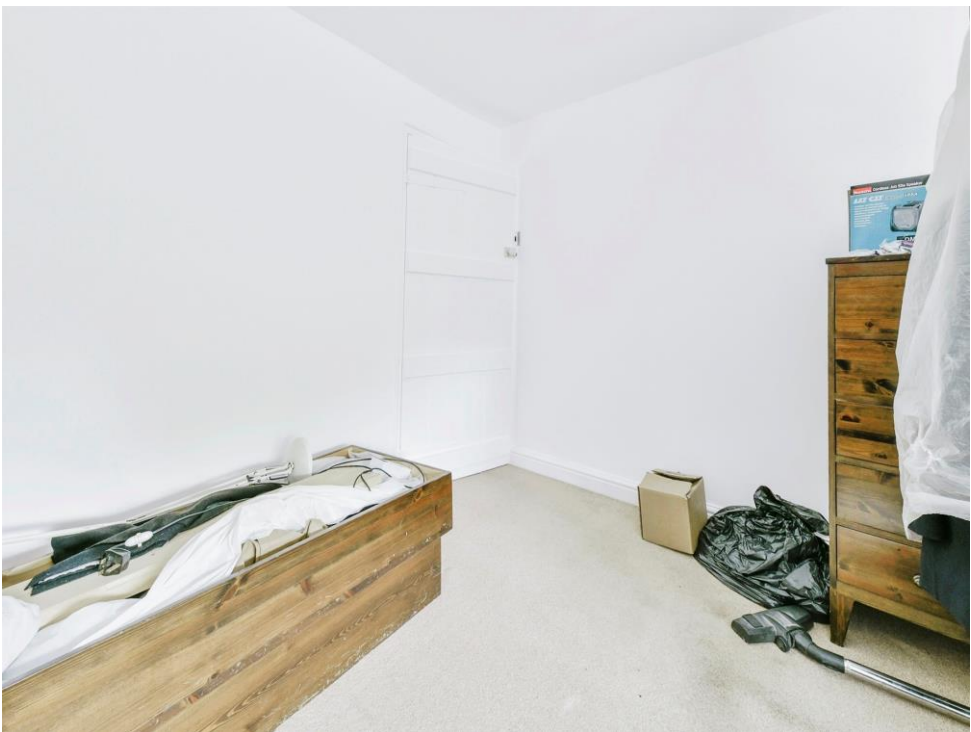
Double glazed window and radiator to side aspect, three piece suite comprising of panelled bath with shower, wash hand basin and W/C and finished with tiled flooring.

### Outside

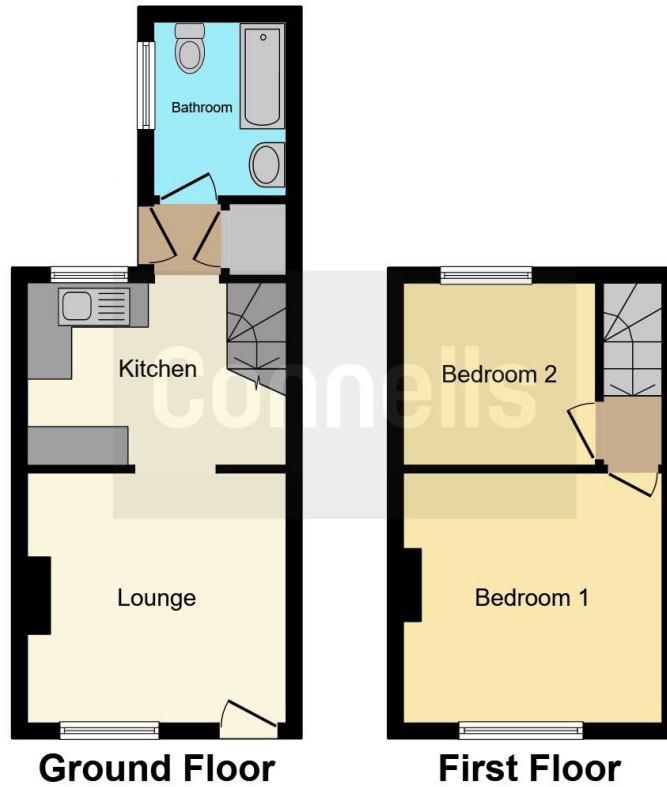
### Rear Garden

Patio area with flower beds and shrubs.









This floor plan is for illustrative purposes only. It is not drawn to scale. Any measurements, floor areas (including any total floor area), openings and orientation are approximate. No details are guaranteed, they cannot be relied upon for any purpose and they do not form part of any agreement. No liability is taken for any error, omission or misstatement. A party must rely upon its own inspection(s). Powered by [www.focalagent.com](http://www.focalagent.com)

To view this property please contact Connells on

**T 01462 437 666**  
**E [hitchin@connells.co.uk](mailto:hitchin@connells.co.uk)**

14 High Street  
 HITCHIN SG5 1AT

**EPC Rating: Awaited**

Tenure: Freehold

**view this property online [connells.co.uk/Property/HIT307709](http://connells.co.uk/Property/HIT307709)**



1. MONEY LAUNDERING REGULATIONS Intending purchasers will be asked to produce identification documentation at a later stage and we would ask for your co-operation in order that there will be no delay in agreeing the sale. 2. These particulars do not constitute part or all of an offer or contract. 3. The measurements indicated are supplied for guidance only and as such must be considered incorrect. Potential buyers are advised to recheck measurements before committing to any expense. 4. We have not tested any apparatus, equipment, fixtures, fittings or services and it is in the buyers interest to check the working condition of any appliances.

Connells Residential is registered in England and Wales under company number 1489613, Registered Office is Cumbria House, 16-20 Hockliffe Street, Leighton Buzzard, Bedfordshire, LU7 1GN. VAT Registration Number is 500 2481 05.

**See all our properties at [www.connells.co.uk](http://www.connells.co.uk) | [www.rightmove.co.uk](http://www.rightmove.co.uk) | [www.zoopla.co.uk](http://www.zoopla.co.uk)**

Property Ref: HIT307709 - 0002