



**Connells**

Eisenhower Place  
Chicksands Shefford





## Property Description

A 3 double bedroom terrace home presented in good condition throughout and offered for sale with no onward chain. Situated in the popular Chicksands development close to Shefford this would make an ideal family home. Offering a capacious lounge diner to the rear, smartly presented kitchen and excellent size bedrooms as well as a lovely garden and allocated parking.

## Entrance Hall

Double storage cupboard and downstairs storage, radiator

## Kitchen

13' 7" x 7' 10" ( 4.14m x 2.39m )

Double glazed window and radiator, units comprise of both wall and base, stainless steel sink/drainage, electric oven, hob and cooker hood with further space for white goods. Wood effect floor and mostly tiled walls.

## Lounge/Diner

26' 11" x 14' 7" narrowing to 9' 11" ( 8.20m x 4.45m narrowing to 3.02m )

Double glazed window, radiator and double glazed sliding door to rear, radiator to side and stairs to first floor.

## First Floor

## Landing

Double glazed window and radiator to front, two storage cupboards and loft access.

## Bedroom One

12' 4" plus recess x 9' 4" plus wardrobe ( 3.76m plus recess x 2.84m plus wardrobe )

Double glazed window and radiator to the front aspect, built in double wardrobe.

## Bedroom Two

11' 10" plus wardrobe x 13' 4" Max ( 3.61m plus wardrobe x 4.06m Max )

Double glazed window and radiator to the rear, two built in double wardrobes.

## Bedroom Three

12' 4" x 9' 11" ( 3.76m x 3.02m )

Double glazed window and radiator to the rear aspect.

## Bathroom

Double glazed window to front, three piece suite comprising of panel bath with shower, wash hand basin and W/C. Party tiled.

## Outside

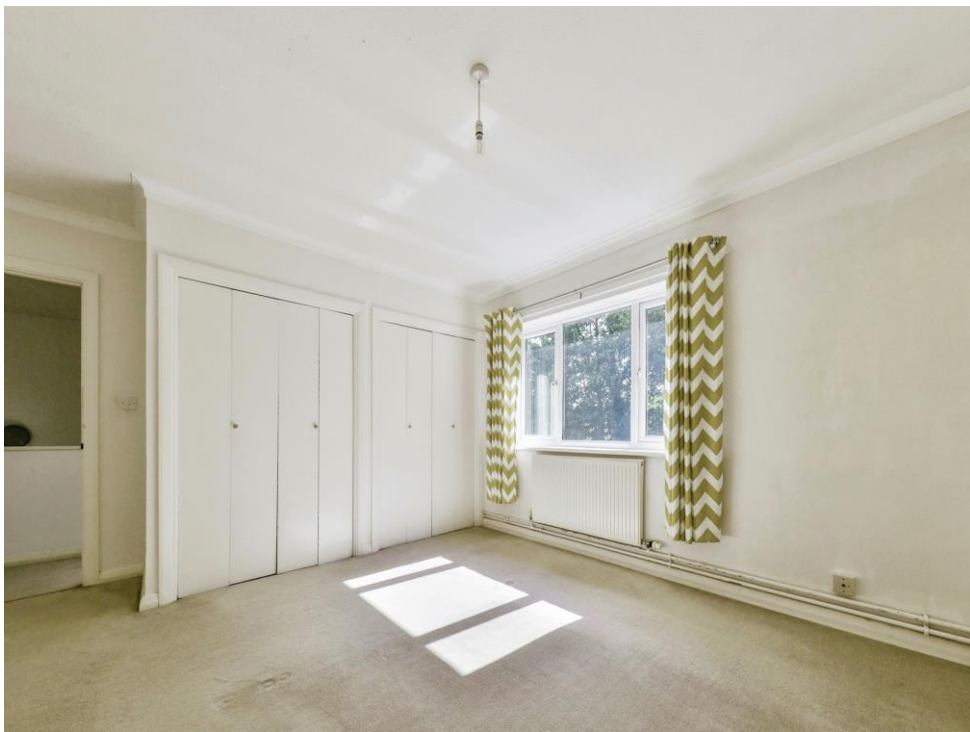
### Front Garden

Mostly laid to lawn

### Rear Garden

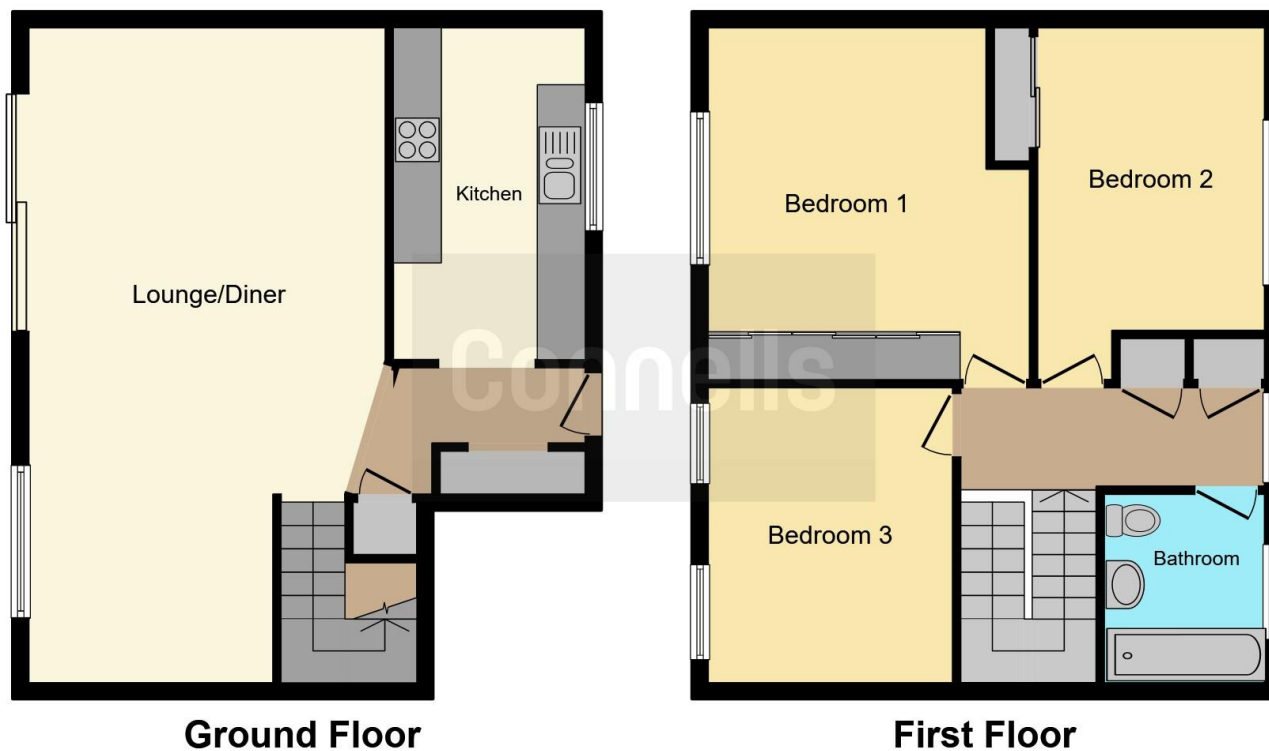
Mostly laid to lawn, patio and concrete area ideal for a seating area. Slate tile borders and shrubs.











This floor plan is for illustrative purposes only. It is not drawn to scale. Any measurements, floor areas (including any total floor area), openings and orientation are approximate. No details are guaranteed, they cannot be relied upon for any purpose and they do not form part of any agreement. No liability is taken for any error, omission or misstatement. A party must rely upon its own inspection(s). Powered by [www.focalagent.com](http://www.focalagent.com)

To view this property please contact Connells on

**T 01462 437 666**  
**E [hitchin@connells.co.uk](mailto:hitchin@connells.co.uk)**

14 High Street  
 HITCHIN SG5 1AT

**EPC Rating: C**

Tenure: Freehold

**view this property online [connells.co.uk/Property/HIT307774](http://connells.co.uk/Property/HIT307774)**



1. MONEY LAUNDERING REGULATIONS Intending purchasers will be asked to produce identification documentation at a later stage and we would ask for your co-operation in order that there will be no delay in agreeing the sale. 2. These particulars do not constitute part or all of an offer or contract. 3. The measurements indicated are supplied for guidance only and as such must be considered incorrect. Potential buyers are advised to recheck measurements before committing to any expense. 4. We have not tested any apparatus, equipment, fixtures, fittings or services and it is in the buyers interest to check the working condition of any appliances.

Connells Residential is registered in England and Wales under company number 1489613, Registered Office is Cumbria House, 16-20 Hockliffe Street, Leighton Buzzard, Bedfordshire, LU7 1GN. VAT Registration Number is 500 2481 05.

**See all our properties at [www.connells.co.uk](http://www.connells.co.uk) | [www.rightmove.co.uk](http://www.rightmove.co.uk) | [www.zoopla.co.uk](http://www.zoopla.co.uk)**

Property Ref: HIT307774 - 0003