



**Connells**

Oughton Close  
Hitchin



## Property Description

A one bedroom park home situated in Oughton Close near to the town centre. There is an entrance hall, a separate lounge, kitchen, double bedroom and a wet room. Benefits from a wrap around garden and off-street parking for one car.

## Entrance Hall

Storage and radiator.

## Lounge

10' 10" x 9' 9" ( 3.30m x 2.97m )

Single glazed window to front aspect, double glazed patio doors to side, TV point, back boiler and radiator.

## Kitchen

9' 8" x 9' 3" max ( 2.95m x 2.82m max )

Two single glazed windows to side aspect, work surfaces, stainless steel sink and drainer, fridge, cooker, washing machine, cupboard housing boiler and radiator.

## Bedroom

9' 8" x 8' 6" ( 2.95m x 2.59m )

Single glazed window to rear aspect and radiator.

## Wet Room

Single glazed window to side aspect, wash hand basin, shower cubicle and WC.

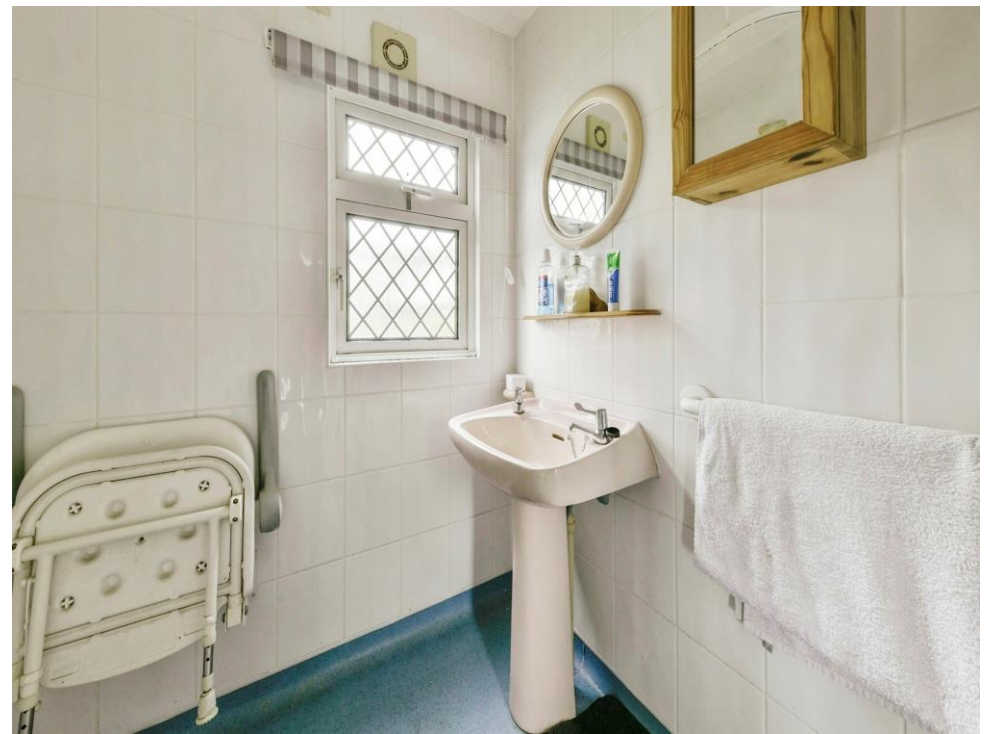
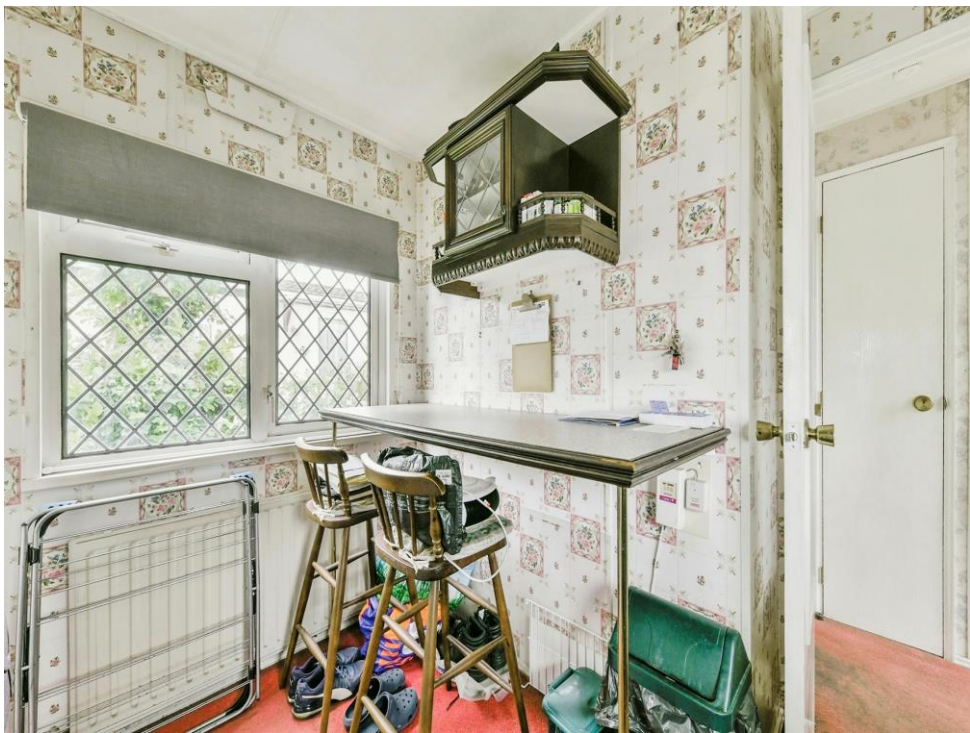
## Garden

Wrap around garden laid to lawn.

## Parking

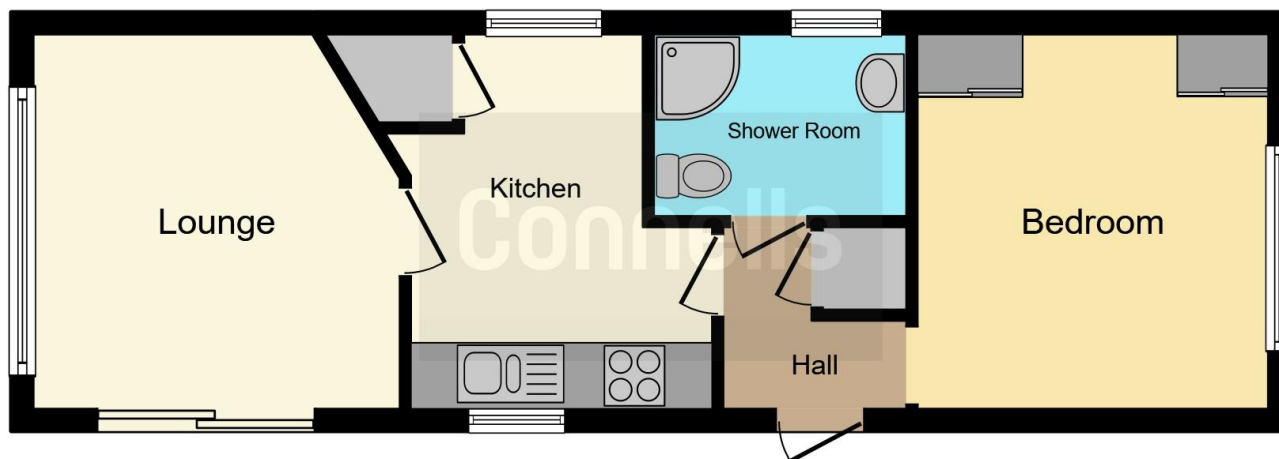
One allocated parking space.







No. 18  
NO  
PARKING



This floor plan is for illustrative purposes only. It is not drawn to scale. Any measurements, floor areas (including any total floor area), openings and orientation are approximate. No details are guaranteed, they cannot be relied upon for any purpose and they do not form part of any agreement. No liability is taken for any error, omission or misstatement. A party must rely upon its own inspection(s). Powered by [www.focalagent.com](http://www.focalagent.com)

To view this property please contact Connells on

**T 01462 437 666**  
**E [hitchin@connells.co.uk](mailto:hitchin@connells.co.uk)**

14 High Street  
HITCHIN SG5 1AT

**EPC Rating: Exempt**

Tenure:

**view this property online [connells.co.uk/Property/HIT307473](http://connells.co.uk/Property/HIT307473)**

We are currently awaiting Tenure details. For further information please contact the branch. Please note additional fees could be incurred for items such as leasehold packs.



1. MONEY LAUNDERING REGULATIONS Intending purchasers will be asked to produce identification documentation at a later stage and we would ask for your co-operation in order that there will be no delay in agreeing the sale. 2. These particulars do not constitute part or all of an offer or contract. 3. The measurements indicated are supplied for guidance only and as such must be considered incorrect. Potential buyers are advised to recheck measurements before committing to any expense. 4. We have not tested any apparatus, equipment, fixtures, fittings or services and it is in the buyers interest to check the working condition of any appliances.

Connells Residential is registered in England and Wales under company number 1489613, Registered Office is Cumbria House, 16-20 Hockliffe Street, Leighton Buzzard, Bedfordshire, LU7 1GN. VAT Registration Number is 500 2481 05.

**See all our properties at [www.connells.co.uk](http://www.connells.co.uk) | [www.rightmove.co.uk](http://www.rightmove.co.uk) | [www.zoopla.co.uk](http://www.zoopla.co.uk)**

Property Ref: HIT307473 - 0002