



Connells

Armour Rise
Hitchin



Property Description

A well presented two bedroom end of terrace home situated in a quiet cul-de-sac location.

The ground floor accommodation comprises a lovely living space to the front and a well fitted kitchen diner to the rear opening onto a low maintenance rear garden.

Upstairs are well proportioned bedrooms and a recently fitted family bathroom. Further benefits include a garage and driveway parking.

Armour Rise is situated quietly close to excellent schooling and within walking distance of the station.

Ground Floor

Entrance Lobby

Double glazed door to front and double glazed window to side aspect.

Lounge

13' 6" max x 13' 3" max (4.11m max x 4.04m max)

TV and telephone points, stairs leading to first floor with storage underneath and two radiators.

Kitchen Diner

13' 6" x 9' 4" (4.11m x 2.84m)

Fully fitted kitchen diner with double glazed window and French doors to rear aspect, a range of wall and base units, work surfaces with splashback tiling, one and a half bowl stainless steel sink and drainer, electric oven, hob with cooker hood over, integrated fridge/freezer, plumbing for washing machine, tiled flooring and radiator.

First Floor

Landing

Stairs from lounge. Loft access with pulldown ladder and storage cupboard.

Bedroom One

13' 6" max x 9' 11" (4.11m max x 3.02m)

Two double glazed windows to front aspect and radiator.

Bedroom Two

10' 4" x 7' 5" (3.15m x 2.26m)

Double glazed window to rear aspect, built-in cupboard and radiator.

Bathroom

Double glazed window to rear aspect, wash hand basin with vanity, panelled bath with shower over, WC, partly tiled and heated towel rail.

Outside

Front Garden

Gravelled frontage with pathway leading to front door.

Rear Garden

A fully enclosed paved rear garden with gated side access.

Parking

Off-road parking with space for up to two cars.

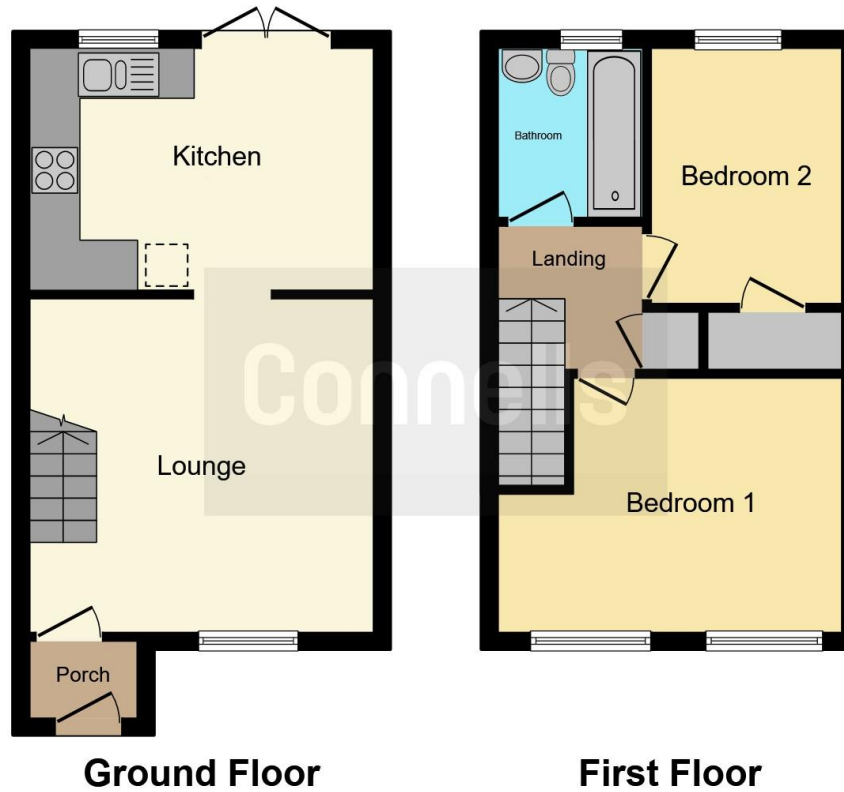
Garage

Garage with up and over door, power and lighting.









This floor plan is for illustrative purposes only. It is not drawn to scale. Any measurements, floor areas (including any total floor area), openings and orientation are approximate. No details are guaranteed, they cannot be relied upon for any purpose and they do not form part of any agreement. No liability is taken for any error, omission or misstatement. A party must rely upon its own inspection(s). Powered by www.focalagent.com

To view this property please contact Connells on

T 01462 437 666
E hitchin@connells.co.uk

14 High Street
 HITCHIN SG5 1AT

EPC Rating: C

Tenure: Freehold

view this property online connells.co.uk/Property/HIT307295



1. MONEY LAUNDERING REGULATIONS Intending purchasers will be asked to produce identification documentation at a later stage and we would ask for your co-operation in order that there will be no delay in agreeing the sale. 2. These particulars do not constitute part or all of an offer or contract. 3. The measurements indicated are supplied for guidance only and as such must be considered incorrect. Potential buyers are advised to recheck measurements before committing to any expense. 4. We have not tested any apparatus, equipment, fixtures, fittings or services and it is in the buyers interest to check the working condition of any appliances.

Connells Residential is registered in England and Wales under company number 1489613, Registered Office is Cumbria House, 16-20 Hockliffe Street, Leighton Buzzard, Bedfordshire, LU7 1GN. VAT Registration Number is 500 2481 05.

See all our properties at www.connells.co.uk | www.rightmove.co.uk | www.zoopla.co.uk

Property Ref: HIT307295 - 0002