



Connells

Waterlow Mews
Little Wymondley Hitchin

Waterlow Mews

Little Wymondley Hitchin SG4 7HL

for sale
£350,000



Property Description

A beautifully presented two bedroom home situated in this private development in Little Wymondley. Offering well proportioned accommodation, off-street parking for two cars and a lovely rear garden this would suit a first time buyer perfectly.

Little Wymondley is a highly sought after village situated close to the A1 and mainline railway station while also being close to fabulous countryside.

Ground Floor

Entrance Hall

Double glazed door to front, stairs leading to first floor and solid oak flooring.

Lounge

13' 10" x 10' (4.22m x 3.05m)

Double glazed doors to rear aspect, TV point and solid oak flooring.

Kitchen

8' 4" x 6' (2.54m x 1.83m)

Fully fitted kitchen with double glazed window to side aspect, a range of wall and base units, electric oven, gas hob with cooker hood over, work surfaces with splashback, space for washing machine and fridge/freezer, boiler and tiled floor.

First Floor

Landing

Access to all first floor accommodation.

Bedroom One

10' x 9' 8" (3.05m x 2.95m)

Double glazed window to side aspect, double overstairs storage and radiator.

Bedroom Two

8' 9" x 7' 8" (2.67m x 2.34m)

Double glazed window to rear aspect and radiator.

Bathroom

Double glazed window to rear aspect, wash hand basin, bath, WC and loft access.

Outside

Front Garden

Block paved driveway for one vehicle, lawn and shrubs. One allocated parking space.

Rear Garden

Patio area and shrubs.

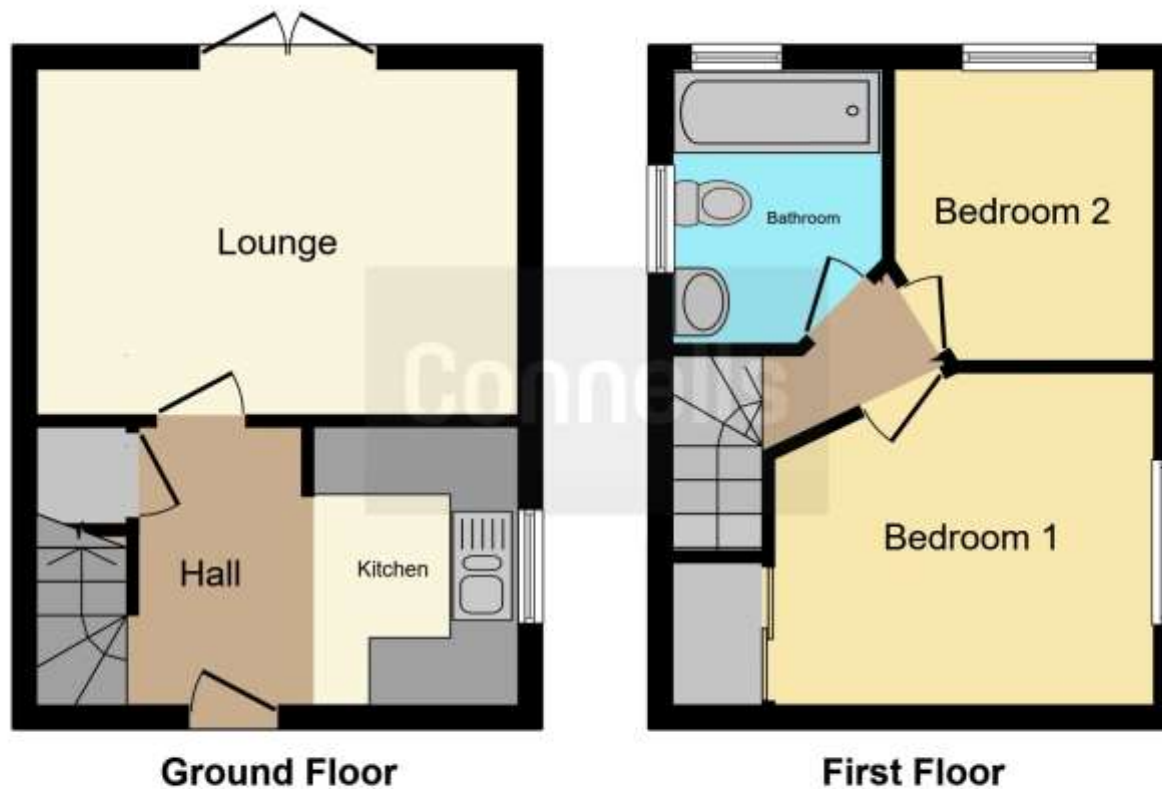
Parking

Dropped kerb parking with space for two cars.









This floor plan is for illustrative purposes only. It is not drawn to scale. Any measurements, floor areas (including any total floor area), openings and orientation are approximate. No details are guaranteed, they cannot be relied upon for any purpose and they do not form part of any agreement. No liability is taken for any error, omission or misstatement. A party must rely upon its own inspection(s). Powered by www.focalagent.com

To view this property please contact Connells on

T 01462 437 666
E hitchin@connells.co.uk

14 High Street
 HITCHIN SG5 1AT

EPC Rating: D

Tenure: Freehold

view this property online connells.co.uk/Property/HIT307591



1. MONEY LAUNDERING REGULATIONS Intending purchasers will be asked to produce identification documentation at a later stage and we would ask for your co-operation in order that there will be no delay in agreeing the sale. 2. These particulars do not constitute part or all of an offer or contract. 3. The measurements indicated are supplied for guidance only and as such must be considered incorrect. Potential buyers are advised to recheck measurements before committing to any expense. 4. We have not tested any apparatus, equipment, fixtures, fittings or services and it is in the buyers interest to check the working condition of any appliances.

Connells Residential is registered in England and Wales under company number 1489613, Registered Office is Cumbria House, 16-20 Hockliffe Street, Leighton Buzzard, Bedfordshire, LU7 1GN. VAT Registration Number is 500 2481 05.

See all our properties at www.connells.co.uk | www.rightmove.co.uk | www.zoopla.co.uk

Property Ref: HIT307591 - 0002