



Connells

Hollybrook Station Road
West Moors Ferndown



Property Description

Built in 2010 is this contemporary block situated in the heart of West Moors. Offering bright accommodation. A top floor apartment, benefiting from lift access with two double bedrooms, two bathrooms, a bright living room with Juliet balcony.

fitted kitchen, sitting room with Juliet balcony, two bedrooms, master bedroom with en-suite shower room and bathroom.

Entrance Hall

Spacious hall with doors to all rooms and radiator.

Lounge

17' 5" x 14' 3" (5.31m x 4.34m)

Carpeted with rear aspect double glazed door to Juliet balcony, Vulux window, TV and telephone point and radiator.

Kitchen

12' 7" x 6' 2" (3.84m x 1.88m)

Double glazed front aspect window, range of wall and base units including corner motion rotating storage unit, 1 1/2 stainless steel sink with drainer and mixer tap, integral 4 ring gas hob with splashback and extractor fan and hood over, eye level double oven, integral fridge freezer and dishwasher and space and plumbing for a washing machine.

Master Bedroom

14' 6" x 9' 1" (4.42m x 2.77m)

Carpeted with front aspect double glazed window, storage cupboard and door to en-suite.

En-Suite

6' 6" x 5' 6" (1.98m x 1.68m)

Fully tiled with low level WC, hand wash basin with mixer tap and vanity mirror and storage unit over, walk in shower cubical with glass sliding door, spotlighting and heated towel rail.

Bedroom 2

16' 4" x 7' 8" (4.98m x 2.34m)

Carpeted with double glazed front aspect window and a range of fitted wardrobes and draw units and built in storage cupboard.

Bathroom

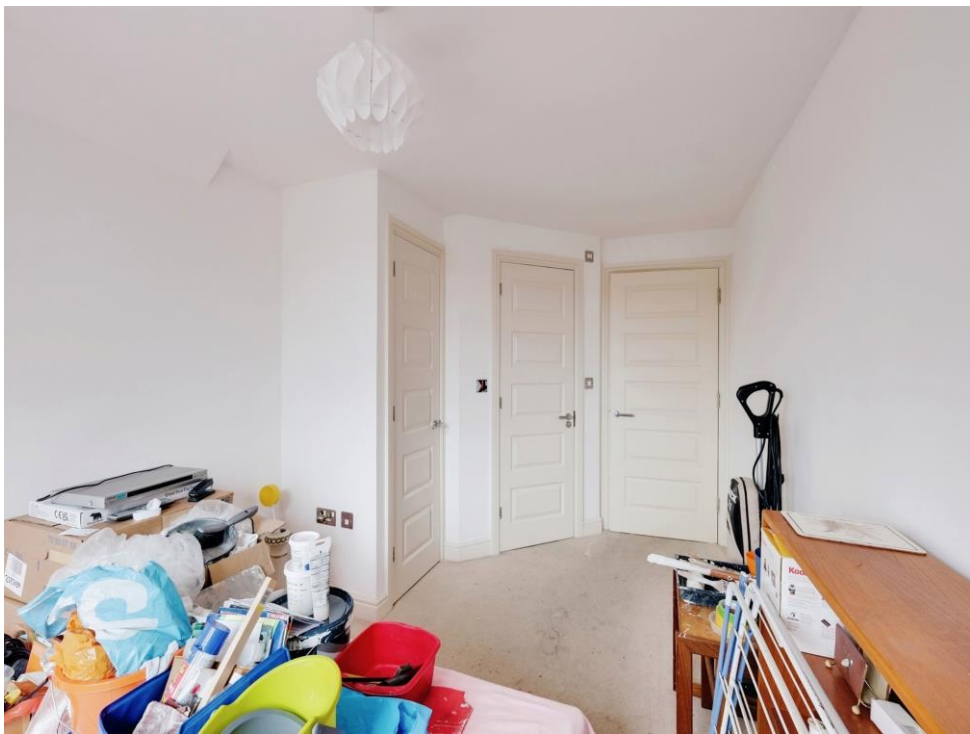
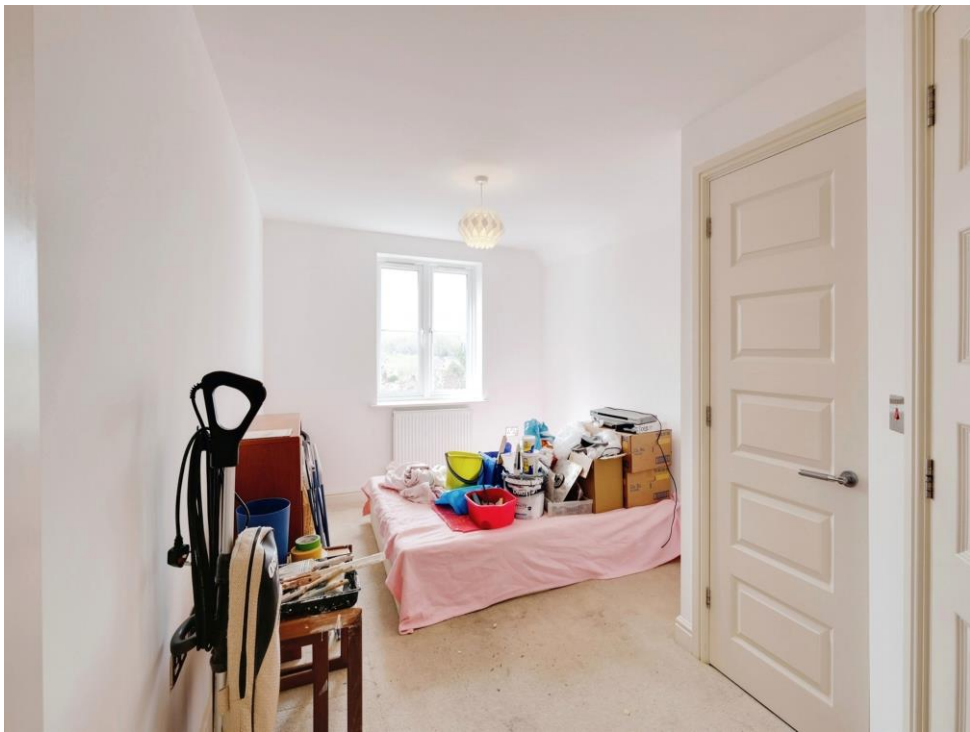
7' x 7' 9" (2.13m x 2.36m)

Part tiled with low level WC, hand wash basin with mixer tap and vanity mirror and cupboard over, panel bath with mixer tap, heated towel rail and spotlighting.

Outside

Communal gardens for residents and one allocated parking space.









This floor plan is for illustrative purposes only. It is not drawn to scale. Any measurements, floor areas (including any total floor area), openings and orientation are approximate. No details are guaranteed, they cannot be relied upon for any purpose and they do not form part of any agreement. No liability is taken for any error, omission or misstatement. A party must rely upon its own inspection(s). Powered by www.focalagent.com

To view this property please contact Connells on

T 01202 861 677
E ferndown@connells.co.uk

37 Victoria Road
FERNDOWN BH22 9HT

EPC Rating: C

Tenure: Leasehold

view this property online connells.co.uk/Property/FDN305843

This is a Leasehold property. We are awaiting further details about the Term of the lease. For further information please contact the branch. Please note additional fees could be incurred for items such as Leasehold packs.



1. MONEY LAUNDERING REGULATIONS Intending purchasers will be asked to produce identification documentation at a later stage and we would ask for your co-operation in order that there will be no delay in agreeing the sale. 2. These particulars do not constitute part or all of an offer or contract. 3. The measurements indicated are supplied for guidance only and as such must be considered incorrect. Potential buyers are advised to recheck measurements before committing to any expense. 4. We have not tested any apparatus, equipment, fixtures, fittings or services and it is in the buyers interest to check the working condition of any appliances.

Connells Residential is registered in England and Wales under company number 1489613, Registered Office is Cumbria House, 16-20 Hockliffe Street, Leighton Buzzard, Bedfordshire, LU7 1GN. VAT Registration Number is 500 2481 05.

See all our properties at www.connells.co.uk | www.rightmove.co.uk | www.zoopla.co.uk

Property Ref: FDN305843 - 0002