



Connells

Priory Gardens
West Moors Ferndown



Property Description

A stunning THREE bedroom home that is conveniently situated within reach of local amenities.

This home has been extended and remodelled to an immaculate finish. The first floor boasts a spacious living and dining room, a fitted kitchen, the master bedroom suite with build in wardrobes and the bathroom. The second floor offers utility space built into the landing, a spacious shower room with waterfall shower and another double bedroom with additional eaves storage.

Viewing is highly recommended to appreciate all this unique home has to offer.

Entrance Porch

Double lock door with cloakroom area. Stairs leading to the first floor.

Entrance Hall

Oak flooring with doors to all rooms and radiators.

Lounge

13' 6" x 11' 9" (4.11m x 3.58m)

Oak flooring with double glazed front aspect window, TV point and radiator.

Kitchen

11' 3" x 6' 11" (3.43m x 2.11m)

Oak flooring with a range of wall and base units, sink with drainer, induction hob with extractor fan and hood over, integrated electric oven, dishwasher, fridge freezer and microwave, breakfast bar area, spotlighting and radiator.

Bedroom 1

12' 10" x 9' 11" (3.91m x 3.02m)

Carpeted with triple glazed rear aspect window, built in sliding wardrobes and radiator.

Bedroom 2

11' 8" x 8' 3" (3.56m x 2.51m)

Carpeted with double glazed front aspect window, built in storage cupboard and radiator.

Bathroom

Fully tiled with Velux window, walk in waterfall shower with glass screen, low level WC, hand wash basin with mixer tap, radiator ladder and water softener.

Landing

Carpeted with doors to all rooms, automatic opening Velux window with blind.

Bedroom 3

13' 6" x 12' 10" (4.11m x 3.91m)

Carpeted with Velux window, eaves storage, TV point and spotlighting.

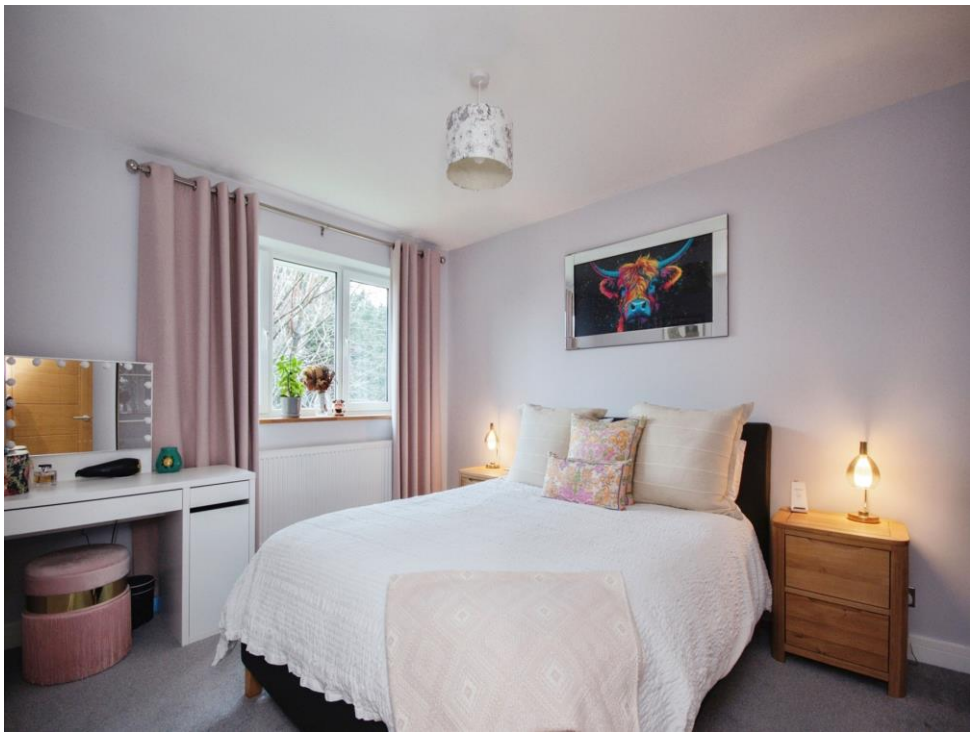
Bathroom

Fully tiled with rear aspect double glazed window, panel bath with waterfall shower over with glass screen, low level WC, double sized hand wash basin with mixer tap, radiator ladder and water softener.

Garage

Single garage in block with up and over door.









This floorplan is for illustrative purposes only and is not drawn to scale. Measurements, floor-areas, openings and orientations are approximate. They should not be relied upon for any purpose and do not form any part of an agreement. No liability is taken for any error or mis-statement. All parties must rely on their own inspections.

To view this property please contact Connells on

T 01202 861 677
E ferndown@connells.co.uk

37 Victoria Road
 FERNDOWN BH22 9HT

EPC Rating: C

Tenure: Leasehold

view this property online [connells.co.uk/Property/FDN305574](https://www.connells.co.uk/Property/FDN305574)

This is a Leasehold property. We are awaiting further details about the Term of the lease. For further information please contact the branch. Please note additional fees could be incurred for items such as Leasehold packs.



1. MONEY LAUNDERING REGULATIONS Intending purchasers will be asked to produce identification documentation at a later stage and we would ask for your co-operation in order that there will be no delay in agreeing the sale. 2. These particulars do not constitute part or all of an offer or contract. 3. The measurements indicated are supplied for guidance only and as such must be considered incorrect. Potential buyers are advised to recheck measurements before committing to any expense. 4. We have not tested any apparatus, equipment, fixtures, fittings or services and it is in the buyers interest to check the working condition of any appliances.

Connells Residential is registered in England and Wales under company number 1489613, Registered Office is Cumbria House, 16-20 Hockliffe Street, Leighton Buzzard, Bedfordshire, LU7 1GN. VAT Registration Number is 500 2481 05.

See all our properties at www.connells.co.uk | www.rightmove.co.uk | www.zoopla.co.uk

Property Ref: FDN305574 - 0006