



Connells

Holbury Close
BOURNEMOUTH



Property Description

Located in the sought-after area of Muscliffe, this well-presented two-bedroom end of terrace house offers a fantastic opportunity for first-time buyers, downsizers, or investors. The property is offered with no onward chain.

The property features two generously sized double bedrooms, a bright and spacious living area, a modern fitted kitchen and a well-maintained rear garden. Being an end of terrace, the home benefits from extra privacy and additional natural light.

Situated within walking distance of Castlepoint Shopping Centre, you'll enjoy easy access to a wide range of shops, restaurants and amenities, as well as excellent transport links and nearby schools.

This is a rare chance to secure a home in a popular residential area with strong local appeal-early viewing is highly recommended.

Entrance Hall

Understairs cupboard.

Lounge

13' 10" x 11' 11" (4.22m x 3.63m)

Front aspect double glazed window. Feature fireplace. Laminate flooring. Radiator.

Kitchen

12' 2" x 8' 5" (3.71m x 2.57m)

Fitted kitchen comprising a range of wall and base units, gas hob, built in electric oven, space for fridge freezer, washing machine and dishwasher.

Landing

Bedroom One

12' 3" x 8' 6" (3.73m x 2.59m)

Rear aspect double glazed window.

Bedroom Two

12' x 8' 7" (3.66m x 2.62m)

Front aspect double glazed window. Radiator.

Bathroom

Fitted suite comprising bath with shower over, wash hand basin and WC. Heated towel rail. Airing cupboard.

Rear Garden

The rear garden is laid to resin and backs onto playing fields. Side access.

Garage

In a block.

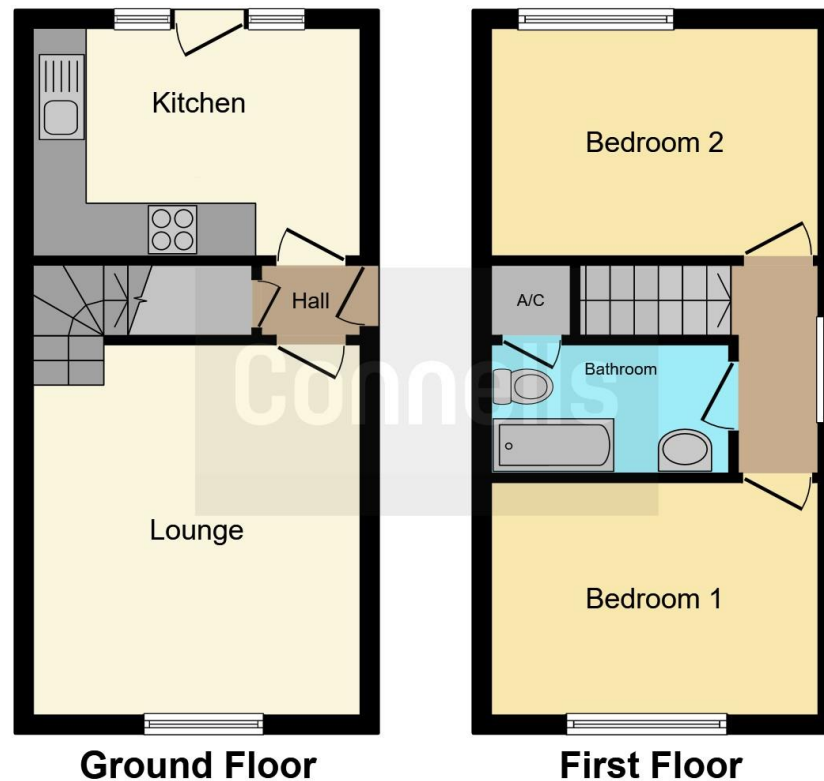
Agents Notes

Council Tax Band: B









This floor plan is for illustrative purposes only. It is not drawn to scale. Any measurements, floor areas (including any total floor area), openings and orientation are approximate. No details are guaranteed, they cannot be relied upon for any purpose and they do not form part of any agreement. No liability is taken for any error, omission or misstatement. A party must rely upon its own inspection(s). Powered by www.focalagent.com

To view this property please contact Connells on

T 01202 861 677
E ferndown@connells.co.uk

37 Victoria Road
 FERNDOWN BH22 9HT

EPC Rating: D Council Tax
 Band: B

Tenure: Freehold

view this property online connells.co.uk/Property/WIN307125



1. MONEY LAUNDERING REGULATIONS Intending purchasers will be asked to produce identification documentation at a later stage and we would ask for your co-operation in order that there will be no delay in agreeing the sale. 2. These particulars do not constitute part or all of an offer or contract. 3. The measurements indicated are supplied for guidance only and as such must be considered incorrect. Potential buyers are advised to recheck measurements before committing to any expense. 4. We have not tested any apparatus, equipment, fixtures, fittings or services and it is in the buyers interest to check the working condition of any appliances.

Connells Residential is registered in England and Wales under company number 1489613, Registered Office is Cumbria House, 16-20 Hockliffe Street, Leighton Buzzard, Bedfordshire, LU7 1GN. VAT Registration Number is 500 2481 05.

See all our properties at www.connells.co.uk | www.rightmove.co.uk | www.zoopla.co.uk

Property Ref: WIN307125 - 0005