



Connells

Ridgeway
Eynesbury St. Neots



Property Description

Entrance Hall

Double glazed door to side. Storage cupboard.

Lounge / Diner

16' 1" x 12' 10" (4.90m x 3.91m)

Double glazed sliding doors to sun lounge. Radiator. Brick fire-place.

Sun Lounge

Brick construction sun lounge to rear. Doors from lounge and two double glazed windows to rear. Double glazed door to rear.

Kitchen

10' 6" x 8' (3.20m x 2.44m)

Double glazed window to sun lounge. Fitted kitchen with wall and base units with worktops over. Inset sink/drain. Plumbing for washing machine. Archway to lounge/diner.

Bedroom One

13' 5" x 9' 2" (4.09m x 2.79m)

Double glazed window to front. Radiator. Built-in wardrobe.

Bedroom Two

9' 10" x 9' 2" (3.00m x 2.79m)

Double glazed window to front. Radiator. Built-in wardrobe.

Bathroom

Window to the side elevation. Low-level WC, wash hand basin, bath and shower cubicle.

Front Garden

Laid to lawn with path to front door.

Rear Garden

Fully enclosed tiered rear garden with steps to each tier. Mixture of pebbled and lawned areas. Planted flower beds.

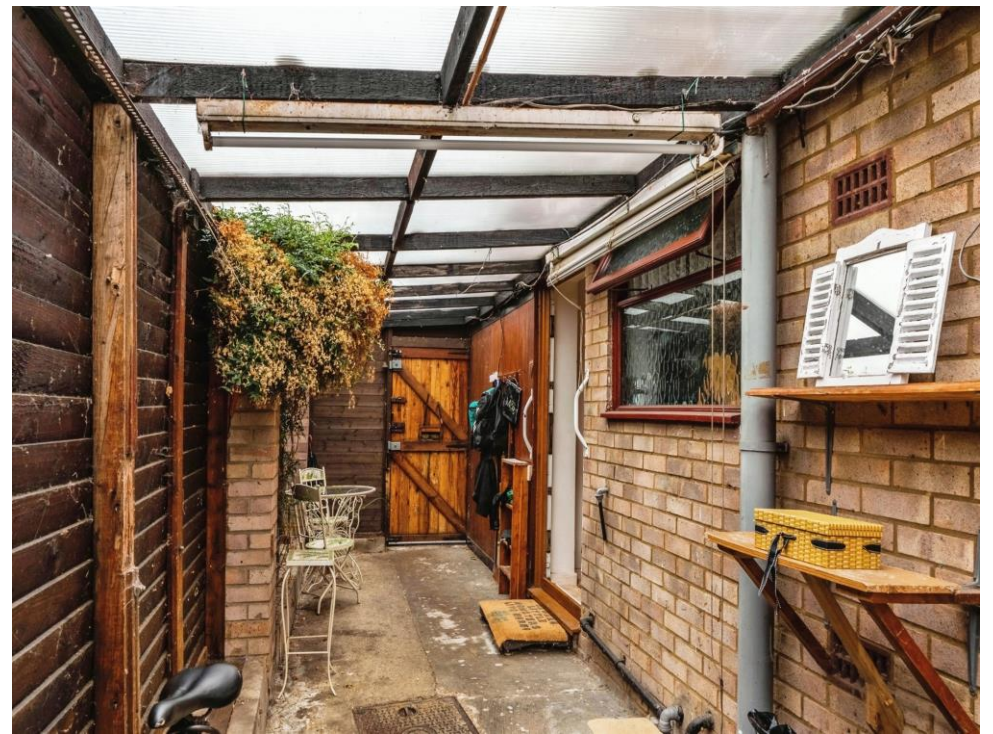
Garage & Carport

Garage with up and over door and carport to rear.

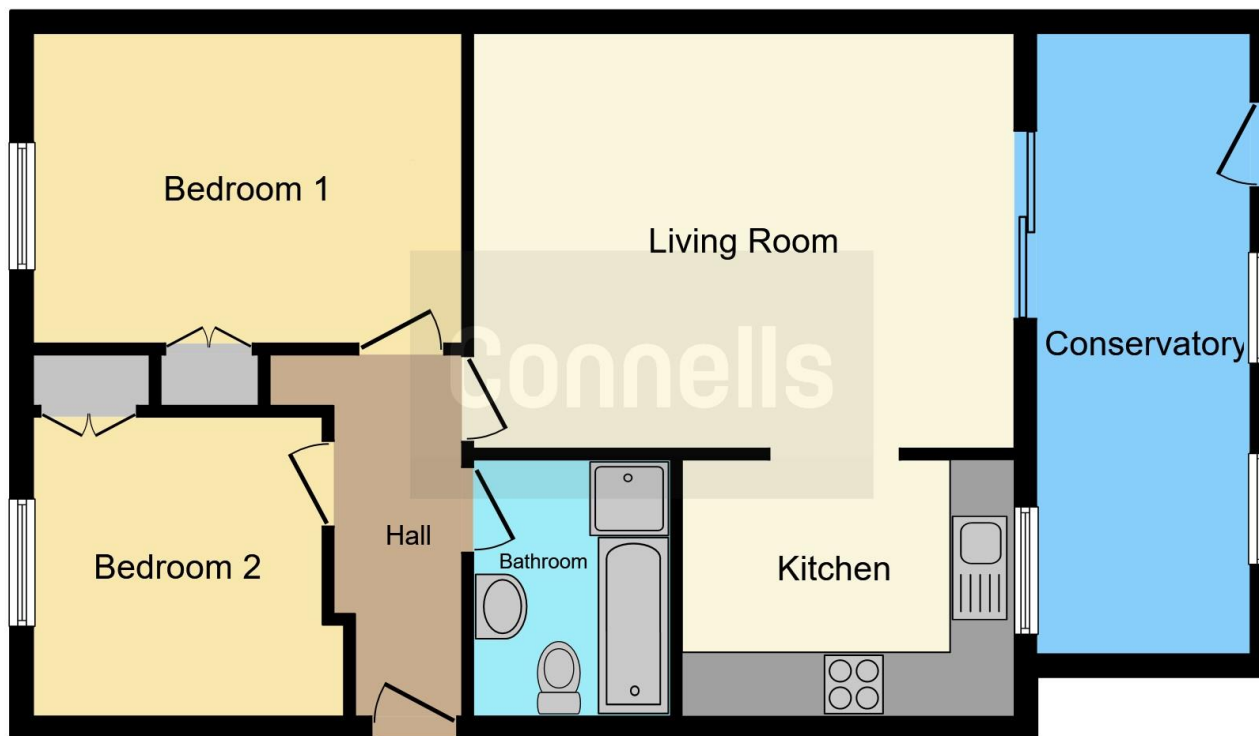
Outbuildings

Garden shed and outbuilding of timber construction.









This floor plan is for illustrative purposes only. It is not drawn to scale. Any measurements, floor areas (including any total floor area), openings and orientation are approximate. No details are guaranteed, they cannot be relied upon for any purpose and they do not form part of any agreement. No liability is taken for any error, omission or misstatement. A party must rely upon its own inspection(s). Powered by www.focalagent.com

To view this property please contact Connells on

T 01480 218 868
E stneots@connells.co.uk

26 Market Square
ST. NEOTS PE19 2AF

EPC Rating: Awaited

Tenure: Freehold

view this property online connells.co.uk/Property/SNT305532



1. MONEY LAUNDERING REGULATIONS Intending purchasers will be asked to produce identification documentation at a later stage and we would ask for your co-operation in order that there will be no delay in agreeing the sale. 2. These particulars do not constitute part or all of an offer or contract. 3. The measurements indicated are supplied for guidance only and as such must be considered incorrect. Potential buyers are advised to recheck measurements before committing to any expense. 4. We have not tested any apparatus, equipment, fixtures, fittings or services and it is in the buyers interest to check the working condition of any appliances.

Connells Residential is registered in England and Wales under company number 1489613, Registered Office is Cumbria House, 16-20 Hockliffe Street, Leighton Buzzard, Bedfordshire, LU7 1GN. VAT Registration Number is 500 2481 05.

See all our properties at www.connells.co.uk | www.rightmove.co.uk | www.zoopla.co.uk

Property Ref: SNT305532 - 0003