



Connells

Anson Close
Grantham



Property Description

A four bedroom town house located within a pleasant cul de sac position with a river frontage outlook. Internally, the accommodation briefly comprises of an Entrance Hall, Downstairs WC, Two Ground Floor Bedrooms, Utility Room, First Floor Landing, Lounge, Kitchen/Diner, Second Floor Landing, Two Further Bedrooms, En-Suite to Master and a Family Bathroom. Externally, the property has a low maintenance rear garden with allocated off parking and garage en-block to rear also.

The property is conveniently positioned for a wealth of amenities and also boast good access links. Fast trains to London are available to London in just over 60 mins from the local railway station.

A four bedroom, town house with accommodation over 3 floors comprising of an Entrance Hall, Downstairs WC, Two Ground Floor Bedrooms, Utility Room, First Floor Landing, Lounge, Kitchen/Diner, Second Floor Landing, Two Further Bedrooms, En-Suite to Master and Family Bathroom.

Entrance Hall

Cloakroom

Cinema Room/bedroom

9' 5" x 11' 7" (2.87m x 3.53m)

Lounge

13' 8" x 16' 2" (4.17m x 4.93m)

Kitchen

12' 2" x 16' 3" (3.71m x 4.95m)

Utility Room

6' 8" x 6' 7" (2.03m x 2.01m)

First Floor

Bedroom One

9' 5" x 11' 2" (2.87m x 3.40m)

Bedroom Two

9' 5" x 10' 6" (2.87m x 3.20m)

Bedroom Three

9' 4" x 12' 7" (2.84m x 3.84m)

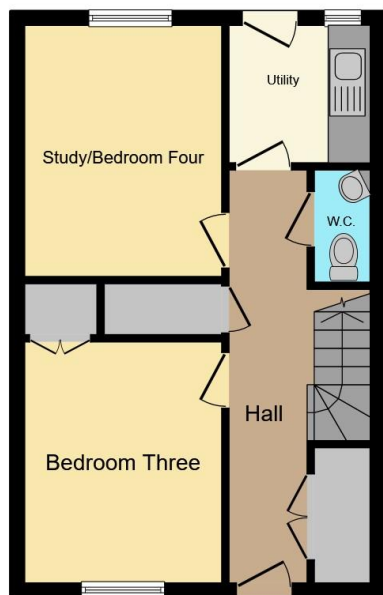
Bathroom

Rear Garden

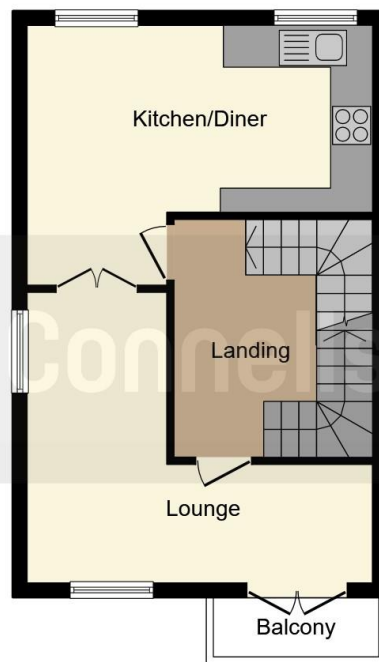




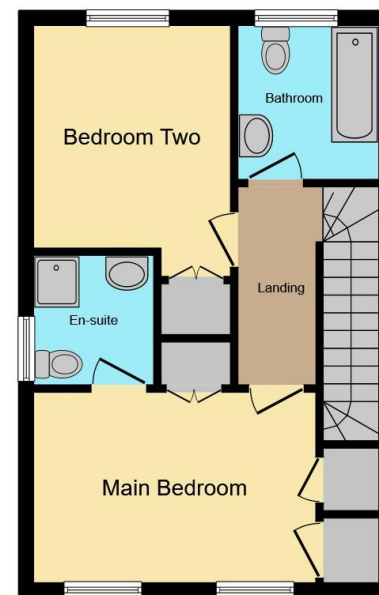




Ground Floor



First Floor



Second Floor

This floor plan is for illustrative purposes only. It is not drawn to scale. Any measurements, floor areas (including any total floor area), openings and orientation are approximate. No details are guaranteed, they cannot be relied upon for any purpose and they do not form part of any agreement. No liability is taken for any error, omission or misstatement. A party must rely upon its own inspection(s). Powered by www.focalagent.com

To view this property please contact Connells on

T 01476 590 050
E grantham@connells.co.uk

2 Watergate
 GRANTHAM NG31 6PR

EPC Rating: C

Tenure: Freehold

view this property online connells.co.uk/Property/GRM308317



1. MONEY LAUNDERING REGULATIONS Intending purchasers will be asked to produce identification documentation at a later stage and we would ask for your co-operation in order that there will be no delay in agreeing the sale. 2. These particulars do not constitute part or all of an offer or contract. 3. The measurements indicated are supplied for guidance only and as such must be considered incorrect. Potential buyers are advised to recheck measurements before committing to any expense. 4. We have not tested any apparatus, equipment, fixtures, fittings or services and it is in the buyers interest to check the working condition of any appliances.

Connells Residential is registered in England and Wales under company number 1489613, Registered Office is Cumbria House, 16-20 Hockliffe Street, Leighton Buzzard, Bedfordshire, LU7 1GN. VAT Registration Number is 500 2481 05.

See all our properties at www.connells.co.uk | www.rightmove.co.uk | www.zoopla.co.uk

Property Ref: GRM308317 - 0003