



WESLEYAN  
CHAPEL  
1825

CONVERTED TO RESIDENCE  
1988

Connells

14a Chapel Street  
Bottesford NOTTINGHAM



### Property Description

A two bedroom semi detached property located within the desirable and amenable village of Bottesford. The property was converted in the late 1980's from a former Wesleyan Chapel and briefly comprises of a Communal Entrance, Lounge, Kitchen/Diner, Rear Porch, First Floor Landing, Two Bedrooms and a Bathroom. Externally, the property has a low maintenance courtyard garden to the rear, with allocated off road parking also to the rear.

The property would ideally suit a first time buyer or buy to let investor and is being offered to the market with no onward chain! Call Connells to view today!

### Entrance Hall

### Lounge

14' 8" x 11' 1" ( 4.47m x 3.38m )

### Kitchen/diner

14' 5" x 11' 2" ( 4.39m x 3.40m )



## First Floor

### Bedroom One

15' 1" x 8' 1" ( 4.60m x 2.46m )

### Bedroom Two

9' 1" x 8' ( 2.77m x 2.44m )

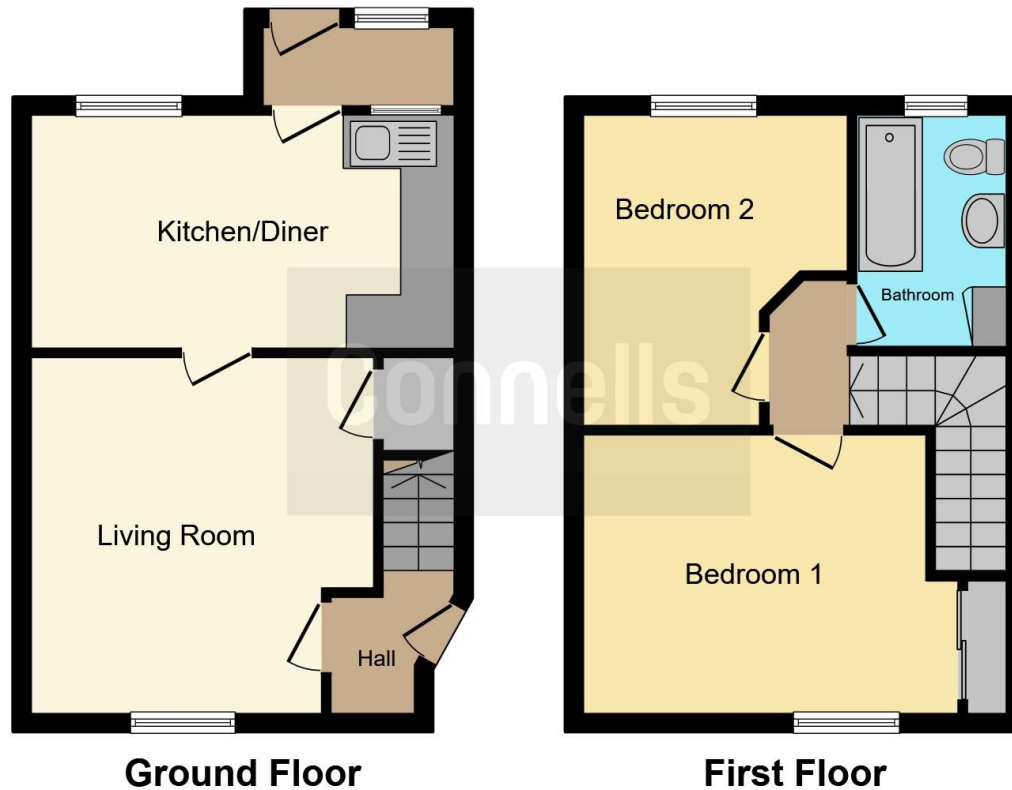
### Bathroom

### Rear Garden









This floor plan is for illustrative purposes only. It is not drawn to scale. Any measurements, floor areas (including any total floor area), openings and orientation are approximate. No details are guaranteed, they cannot be relied upon for any purpose and they do not form part of any agreement. No liability is taken for any error, omission or misstatement. A party must rely upon its own inspection(s). Powered by [www.focalagent.com](http://www.focalagent.com)

To view this property please contact Connells on

**T 01476 590 050**  
**E [grantham@connells.co.uk](mailto:grantham@connells.co.uk)**

2 Watergate  
 GRANTHAM NG31 6PR

**EPC Rating: D**

Tenure: Freehold

**view this property online [connells.co.uk/Property/GRM308339](http://connells.co.uk/Property/GRM308339)**



1. MONEY LAUNDERING REGULATIONS Intending purchasers will be asked to produce identification documentation at a later stage and we would ask for your co-operation in order that there will be no delay in agreeing the sale. 2. These particulars do not constitute part or all of an offer or contract. 3. The measurements indicated are supplied for guidance only and as such must be considered incorrect. Potential buyers are advised to recheck measurements before committing to any expense. 4. We have not tested any apparatus, equipment, fixtures, fittings or services and it is in the buyers interest to check the working condition of any appliances.

Connells Residential is registered in England and Wales under company number 1489613, Registered Office is Cumbria House, 16-20 Hockliffe Street, Leighton Buzzard, Bedfordshire, LU7 1GN. VAT Registration Number is 500 2481 05.

**See all our properties at [www.connells.co.uk](http://www.connells.co.uk) | [www.rightmove.co.uk](http://www.rightmove.co.uk) | [www.zoopla.co.uk](http://www.zoopla.co.uk)**

Property Ref: GRM308339 - 0004