



Connells

Linkside
Bretton Peterborough



Property Description

This fantastic three bedroom family home is within walking distance to Lime Academy Watergall, Iqra Academy & Helwate School. A short drive to Discovery Primary Academy & Queen Katherine Academy as well as local amenities including Morrisons, Sainsburys at Bretton Centre, PureGym, Planet Ice, Hollywood Bowl as well as convenient transport links. The home comprises in brief of an entrance hallway leading through to the lounge and kitchen. Upstairs are three bedrooms and the family bathroom. Outside is a private rear garden with patio and decking area. The mid terraced home also benefits from on street parking. Call to book your slot!

Benefiting from a rear garden, kitchen, lounge, cloakroom and family bathroom. This three bedroom, mid terraced home is close by to schools and Bretton Centre shopping park with a short drive to the City Centre. Call to book your viewing slot today to avoid disappointment.

Entrance Hall

Vinyl flooring, cupboard and radiator.

Cloakroom

Double glazed window to front, tiled flooring and walls, radiator, wash hand basin and WC.

Lounge

17' 8" x 10' 2" (5.38m x 3.10m)
Double glazed window to rear, French door to rear, wood laminate flooring and radiator.

Kitchen

11' 1" x 15' 6" (3.38m x 4.72m)
Measurements include recess - Double glazed window to front, wood laminate flooring, radiator, breakfast bar, space for washing machine/fridge/freezer, dishwasher (staying), integrated electric oven and microwave and hob.

First Floor

Landing

Airing cupboard and carpet.

Bedroom One

8' 9" x 13' 8" (2.67m x 4.17m)
Measurements plus recess - Double glazed window to rear and carpet.

Bedroom Two

12' 8" x 8' 10" (3.86m x 2.69m)
Double glazed window to front, radiator and carpet.

Bedroom Three

7' 8" x 8' 8" (2.34m x 2.64m)

Double glazed window to rear, radiator and carpet.

Bathroom

6' 10" x 8' 5" (2.08m x 2.57m)

Measurements are maximum - Double glazed window to front, tiled walls, vinyl flooring, heated towel rail, cupboard, bath with shower over, wash hand basin and WC.

Outside

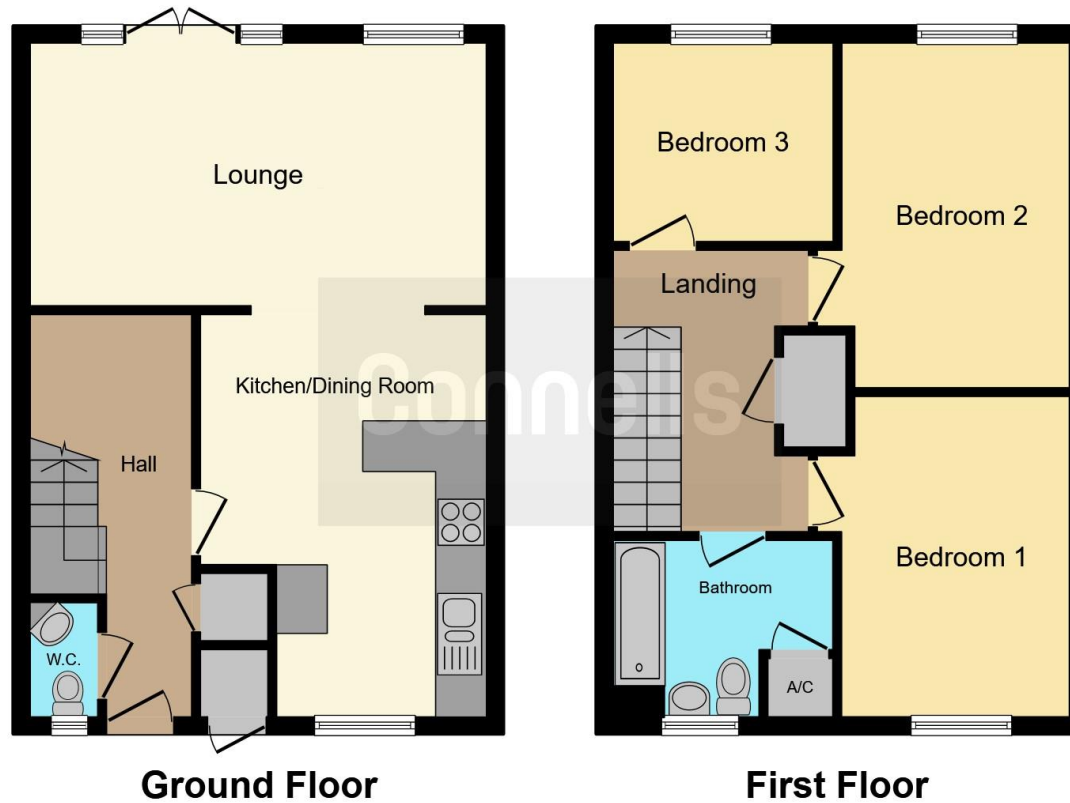
Rear Garden

Lean to, lawn, patio area and decking.









This floorplan is for illustrative purposes only and is not drawn to scale. Measurements, floor-areas, openings and orientations are approximate. They should not be relied upon for any purpose and do not form any part of an agreement. No liability is taken for any error or mis-statement. All parties must rely on their own inspections.

To view this property please contact Connells on

T 01733 314 775
E peterborough@connells.co.uk

14 Cowgate
 PETERBOROUGH PE1 1NA

EPC Rating: C

view this property online connells.co.uk/Property/PBO311443

Tenure: Freehold



1. MONEY LAUNDERING REGULATIONS Intending purchasers will be asked to produce identification documentation at a later stage and we would ask for your co-operation in order that there will be no delay in agreeing the sale. 2. These particulars do not constitute part or all of an offer or contract. 3. The measurements indicated are supplied for guidance only and as such must be considered incorrect. Potential buyers are advised to recheck measurements before committing to any expense. 4. We have not tested any apparatus, equipment, fixtures, fittings or services and it is in the buyers interest to check the working condition of any appliances.

Connells Residential is registered in England and Wales under company number 1489613, Registered Office is Cumbria House, 16-20 Hockliffe Street, Leighton Buzzard, Bedfordshire, LU7 1GN. VAT Registration Number is 500 2481 05.

See all our properties at www.connells.co.uk | www.rightmove.co.uk | www.zoopla.co.uk

Property Ref: PBO311443 - 0007