



Connells

Drummond Close
Hampton Gardens Peterborough

Drummond Close Hampton Gardens Peterborough PE7 8PY

for sale
£300,000



Property Description

This attractive three-bedroom detached home in Hampton Gardens combines contemporary design with practical living spaces. The ground floor features a welcoming entrance hall, a bright and airy lounge, and a modern kitchen/dining room with French doors opening onto the rear garden—perfect for entertaining or family meals. A convenient downstairs WC completes the ground floor.

Upstairs, the property boasts three well-proportioned bedrooms, including a generous master bedroom with its own en-suite shower room. The remaining two bedrooms share a stylish family bathroom, and there is a spacious landing area providing access to all rooms.

Externally, the home benefits from a private rear garden, ideal for outdoor relaxation, and off-road parking. Situated in Hampton Gardens, the property is close to local amenities, schools, and excellent transport links, making it a fantastic choice for modern family living.

Entrance Hall

Stairs to first floor, understairs storage and door to front.

Cloakroom

Wash hand basin and WC.

Lounge

Window to front and carpet.

Kitchen/Diner

Window to rear, high and low level storage with worktops over, laminate flooring, Integrated oven and gas hob, window to rear, patio door to rear, stainless steel sink/drainage with mixer tap, space for fridge/freezer and radiator.

Utility Room

Door to side, low level storage, space for washing machine/tumble dryer.

First Floor Landing

Bedroom One

Window to front, radiator and carpet.

En-Suite

Shower cubicle with rainfall shower, WC, tiled splashbacks, wash hand basin and window to front.

Bedroom Two

Window to rear and carpet.

Bedroom Three

Window to rear and carpet.

Bathroom

Bath with shower over, WC, vinyl flooring, tiled walls around bath, wash hand basin and window to side.

Outside

Rear Garden

Laid to astro turf and patio area.

Front

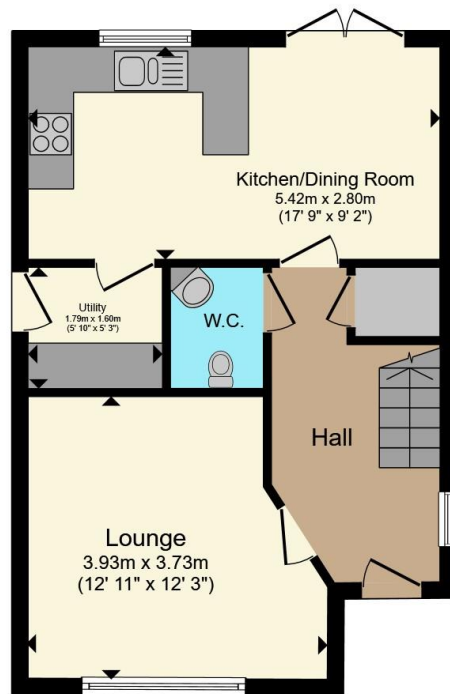
Driveway to the side, patio area and lawn area.

Garage

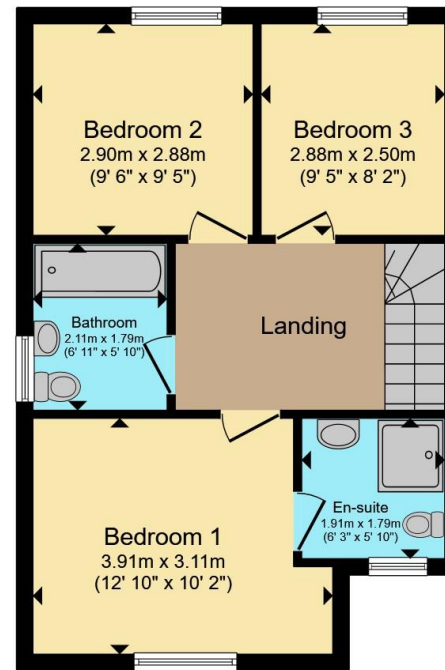








Ground Floor



First Floor

Total floor area 86.3 m² (929 sq.ft.) approx

This floor plan is for illustrative purposes only. It is not drawn to scale. Any measurements, floor areas (including any total floor area), openings and orientation are approximate. No details are guaranteed, they cannot be relied upon for any purpose and they do not form part of any agreement. No liability is taken for any error, omission or misstatement. A party must rely upon its own inspection(s). Powered by www.propertybox.io



To view this property please contact Connells on

T 01733 314 775
E peterborough@connells.co.uk

14 Cowgate
 PETERBOROUGH PE1 1NA

EPC Rating: C Council Tax
 Band: D

Tenure: Freehold

view this property online connells.co.uk/Property/PBO312617



1. MONEY LAUNDERING REGULATIONS Intending purchasers will be asked to produce identification documentation at a later stage and we would ask for your co-operation in order that there will be no delay in agreeing the sale. 2. These particulars do not constitute part or all of an offer or contract. 3. The measurements indicated are supplied for guidance only and as such must be considered incorrect. Potential buyers are advised to recheck measurements before committing to any expense. 4. We have not tested any apparatus, equipment, fixtures, fittings or services and it is in the buyers interest to check the working condition of any appliances.

Connells Residential is registered in England and Wales under company number 1489613, Registered Office is Cumbria House, 16-20 Hockliffe Street, Leighton Buzzard, Bedfordshire, LU7 1GN. VAT Registration Number is 500 2481 05.

See all our properties at www.connells.co.uk | www.rightmove.co.uk | www.zoopla.co.uk

Property Ref: PBO312617 - 0003