



Connells

Black Swan Crescent
Hampton Hargate Peterborough

Black Swan Crescent Hampton Hargate Peterborough PE7 8HF

for sale guide price
£300,000



Property Description

Guide Price £300,000 - £325,000

An ideal family home located in the popular Hampton Hargate area.

The sought after township of Hampton is situated south of Peterborough and is a popular location for families and couples. Built around a series of lakes and parks it offers picturesque views and walks and is a residential area of choice. It provides a variety of amenities ranging from shops and restaurants to schools and a library. Close by is the Serpentine Green Shopping Centre which offers a wide range of popular retailers. Hampton has many commuter links with various bus routes and provides easy access to the A1 motorway.

Hall

With radiator, laminate flooring and doors leading to the kitchen, cloakroom and dining room. Stairs leading to the first floor.

Cloakroom

With a w/c, wash hand basin, radiator and tiled floor. Restricted head height.

Kitchen

13' 8" x 8' 4" (4.17m x 2.54m)

With a range of matching wall and base units with worktop over, single oven, 4 ring gas hob, 1.5 sink and drainer, sink and drainer, radiator, vinyl flooring and a window to the front. Space for a washing machine, tumble dryer, dishwasher and fridge/freezer.

Dining Room

10' 3" x 14' 11" (3.12m x 4.55m)

With a radiator, laminate flooring and a patio door to the rear leading to the rear garden.

First Floor

With an airing cupboard and carpet. Doors leading to the lounge, the master bedroom and bedroom four. Stairs leading to the second floor.

Lounge

16' 1" x 11' 3" (4.90m x 3.43m)

With a radiator, carpet and windows to the front and rear.

Bedroom One

10' 4" x 11' 9" (3.15m x 3.58m)

With a fitted double wardrobe, carpet, radiator and a window to the front. Door leading to the en-suite.

En-Suite

With a shower cubicle, w/c, wash hand basin, shave point, spotlights, radiator and tiled floor.

Bedroom Four

10' 5" into recess x 11' 6" into recess (3.17m into recess x 3.51m into recess)

With fitted wardrobe, radiator, carpet and a window to the rear.

Second Floor

With a radiator, carpet, velux window and access to the loft. Doors leading to bedroom two, bedroom three and the bathroom.

Bedroom Two

13' 9" x 11' 3" (4.19m x 3.43m)

With a radiator, carpet and a window to the front. Sloped ceilings giving restricted head height.

Bedroom Three

9' 2" x 15' (2.79m x 4.57m)

With a radiator, carpet and a window to the front. Sloped ceilings giving restricted head height.

Bathroom

With a w/c, wash hand basin, shower cubicle, bath with shower attachment over, radiator, tiled floor, spotlights and a velux window to the rear. Sloped ceilings giving restricted head height.

Rear Garden

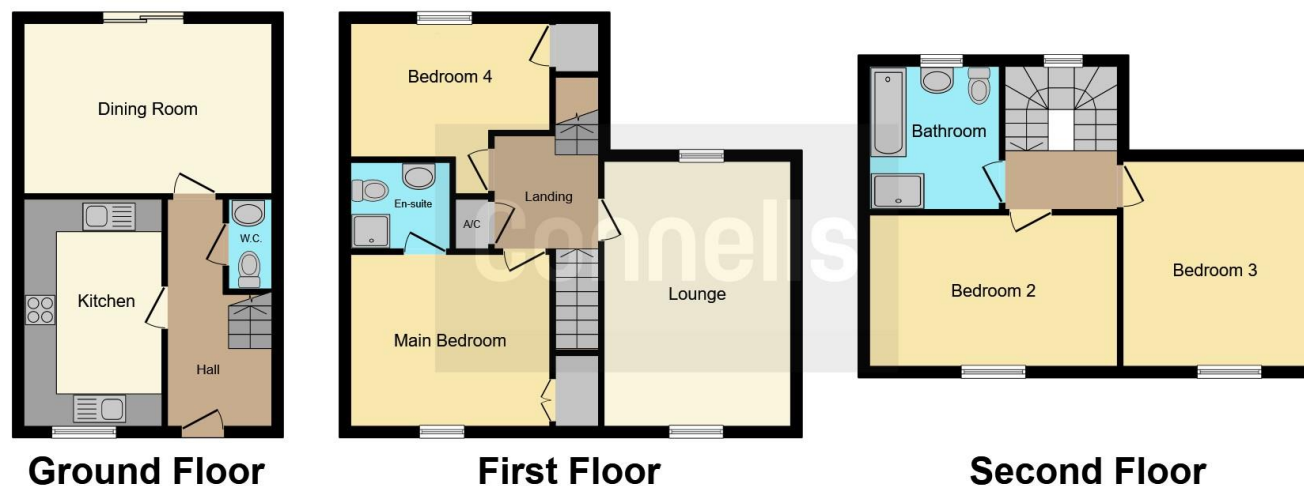
Mainly laid to lawn with a patio area. Access to the garage.

External

With a carport, external tap and garage. The garage has lighting and electrics.







This floor plan is for illustrative purposes only. It is not drawn to scale. Any measurements, floor areas (including any total floor area), openings and orientation are approximate. No details are guaranteed, they cannot be relied upon for any purpose and they do not form part of any agreement. No liability is taken for any error, omission or misstatement. A party must rely upon its own inspection(s). Powered by www.focalagent.com

To view this property please contact Connells on

T 01733 314 775
E peterborough@connells.co.uk

14 Cowgate
 PETERBOROUGH PE1 1NA

EPC Rating: C Council Tax
 Band: D

Tenure: Freehold

view this property online connells.co.uk/Property/HAH305671



1. MONEY LAUNDERING REGULATIONS Intending purchasers will be asked to produce identification documentation at a later stage and we would ask for your co-operation in order that there will be no delay in agreeing the sale. 2. These particulars do not constitute part or all of an offer or contract. 3. The measurements indicated are supplied for guidance only and as such must be considered incorrect. Potential buyers are advised to recheck measurements before committing to any expense. 4. We have not tested any apparatus, equipment, fixtures, fittings or services and it is in the buyers interest to check the working condition of any appliances.

Connells Residential is registered in England and Wales under company number 1489613, Registered Office is Cumbria House, 16-20 Hockliffe Street, Leighton Buzzard, Bedfordshire, LU7 1GN. VAT Registration Number is 500 2481 05.

See all our properties at www.connells.co.uk | www.rightmove.co.uk | www.zoopla.co.uk

Property Ref: HAH305671 - 0020