



**Connells**

Hewitt Close  
Hampton Heights Peterborough



# Hewitt Close Hampton Heights Peterborough PE7 8ST

for sale  
**£250,000**



## Property Description

The sought after township of Hampton is situated south of Peterborough and is a popular location for families and couples. Built around a series of lakes and parks it offers picturesque views and walks and is a residential area of choice. It provides a variety of amenities ranging from shops and restaurants to schools and a library. Close by is the Serpentine Green Shopping Centre which offers a wide range of popular retailers. Hampton has many commuter links with various bus routes and provides easy access to the A1 motorway.

This well presented property would make an ideal family home, be a perfect opportunity for those looking to make an investment purchase or a first time buyer. Offering three bedrooms with an en suite to the master, the property also benefits from a modern kitchen with fitted appliances.

## Entrance Hall

With laminate flooring, storage cupboard and understairs cupboard. Stairs leading to the first floor and doors leading to the lounge, kitchen/diner and cloakroom.

## Lounge

11' 1" x 15' maximum ( 3.38m x 4.57m maximum )

With a patio door to the rear, radiator and laminate flooring.

## Kitchen / Diner

16' 4" x 7' 10" maximum ( 4.98m x 2.39m maximum )

With a range of matching wall and base units with worktop over, 1.5 sink and drainer, single oven, 4 ring gas hob, fridge freezer, washing machine and dishwasher. Window to the front, radiator and laminate flooring.

## Cloakroom

With wc, wash hand basin, window to the front, radiator and laminate flooring.

## First Floor Landing

With carpet, cupboard and doors leading to bedrooms one, two, three and the bathroom.

## Bedroom One

11' maximum x 10' ( 3.35m maximum x 3.05m )

With two built in wardrobes, a window to the rear, radiator and carpet. Door leading to the en suite.

## En Suite

Partly tiled with a double shower cubicle, wc, wash hand basin, shave point, radiator, a window to the rear and laminate flooring.

## Bedroom Two

10' 6" x 7' 9" ( 3.20m x 2.36m )

With a window to the front, radiator, carpet and access to the loft.

## Bedroom Three

7' 1" x 7' ( 2.16m x 2.13m )

With a window to the front, radiator and carpet.

## Bathroom

With a bath with a shower attachment, wc, wash hand basin, shave point, radiator and laminate flooring.

## External

The front of the property is laid to lawn with a shrub border, along with a driveway. The enclosed rear garden is laid to lawn with a patio area, an external tap and external power sockets. Access to the garden can be gained via the side from the driveway.

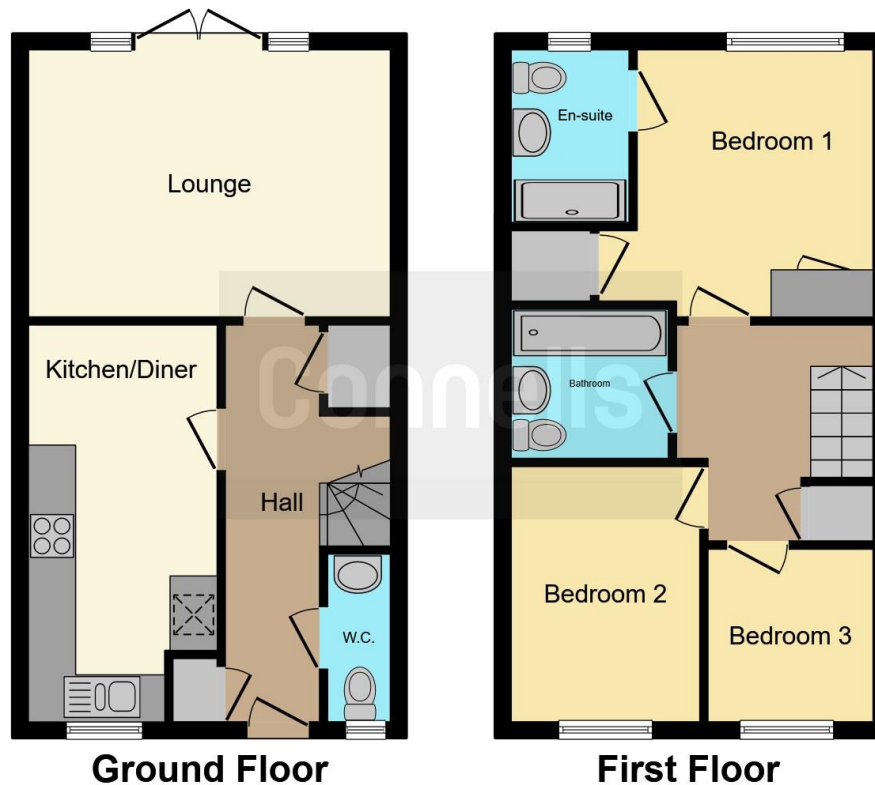












This floor plan is for illustrative purposes only. It is not drawn to scale. Any measurements, floor areas (including any total floor area), openings and orientation are approximate. No details are guaranteed, they cannot be relied upon for any purpose and they do not form part of any agreement. No liability is taken for any error, omission or misstatement. A party must rely upon its own inspection(s). Powered by [www.focalagent.com](http://www.focalagent.com)

To view this property please contact Connells on

**T 01733 314 775**  
**E [peterborough@connells.co.uk](mailto:peterborough@connells.co.uk)**

14 Cowgate  
 PETERBOROUGH PE1 1NA

EPC Rating: B Council Tax  
 Band: C

Tenure: Freehold

**view this property online [connells.co.uk/Property/HAH305917](http://connells.co.uk/Property/HAH305917)**



1. MONEY LAUNDERING REGULATIONS Intending purchasers will be asked to produce identification documentation at a later stage and we would ask for your co-operation in order that there will be no delay in agreeing the sale. 2. These particulars do not constitute part or all of an offer or contract. 3. The measurements indicated are supplied for guidance only and as such must be considered incorrect. Potential buyers are advised to recheck measurements before committing to any expense. 4. We have not tested any apparatus, equipment, fixtures, fittings or services and it is in the buyers interest to check the working condition of any appliances.

Connells Residential is registered in England and Wales under company number 1489613, Registered Office is Cumbria House, 16-20 Hockliffe Street, Leighton Buzzard, Bedfordshire, LU7 1GN. VAT Registration Number is 500 2481 05.

**See all our properties at [www.connells.co.uk](http://www.connells.co.uk) | [www.rightmove.co.uk](http://www.rightmove.co.uk) | [www.zoopla.co.uk](http://www.zoopla.co.uk)**

Property Ref: HAH305917 - 0005