



Connells

Ringwood  
Bretton Peterborough

# Ringwood Bretton Peterborough PE3 9SR

for sale  
**£230,000**



## Property Description

Connells are proud to present this 3-bedroom, detached home located in South Bretton within easy reach of local amenities, schools, green spaces, Bretton Centre, Peterborough City hospital and convenient transport links.

Upon entering the property you are met with the entrance hall leading through to the spacious lounge/diner, conservatory, perfect for relaxing or entertaining whilst enjoying the view of the rear garden and the kitchen.

The home features three good sized bedrooms and bathroom to the first floor.

Outside is the private rear garden, gravel to the front and garage.

Presenting this 3-bedroom, detached home located in South Bretton, The ground floor comprises an entrance hall, lounge/diner, kitchen and conservatory. Upstairs are three good sized bedrooms and family bathroom. Outside is an enclosed rear garden and single garage.

## Entrance Hall

Laminate flooring, radiator, stairs to first floor.

## Lounge/Diner

11' 3" x 19' 6" ( 3.43m x 5.94m )

Plus bay window to front, fireplace, carpet and radiator.

## Kitchen

9' 8" x 8' 10" ( 2.95m x 2.69m )

Window and door to rear, high and low level storage with worktops over, laminate flooring, space for washing machine, oven with gas hob and hood, space for dishwasher, wall mounted boiler and tiled walls.

## Conservatory

11' 3" x 7' ( 3.43m x 2.13m )

Door to rear, laminate flooring and radiator.

## First Floor Landing

Storage cupboard.

## Bedroom One

10' 8" x 12' 9" ( 3.25m x 3.89m )

Plus bay window to the front, carpet, radiator and wardrobe.

## Bedroom Two

10' 1" x 6' 6" ( 3.07m x 1.98m )

Window to the rear, laminate flooring and radiator.

## Bedroom Three

9' 6" x 8' 5" max ( 2.90m x 2.57m max )

Window to front, storage shelves, carpet and radiator.

## Bathroom

Window to rear, laminate flooring, chrome heated towel rail, bath with shower over, wash hand basin and WC.

## Outside

### Rear Garden

Gated access and courtyard.

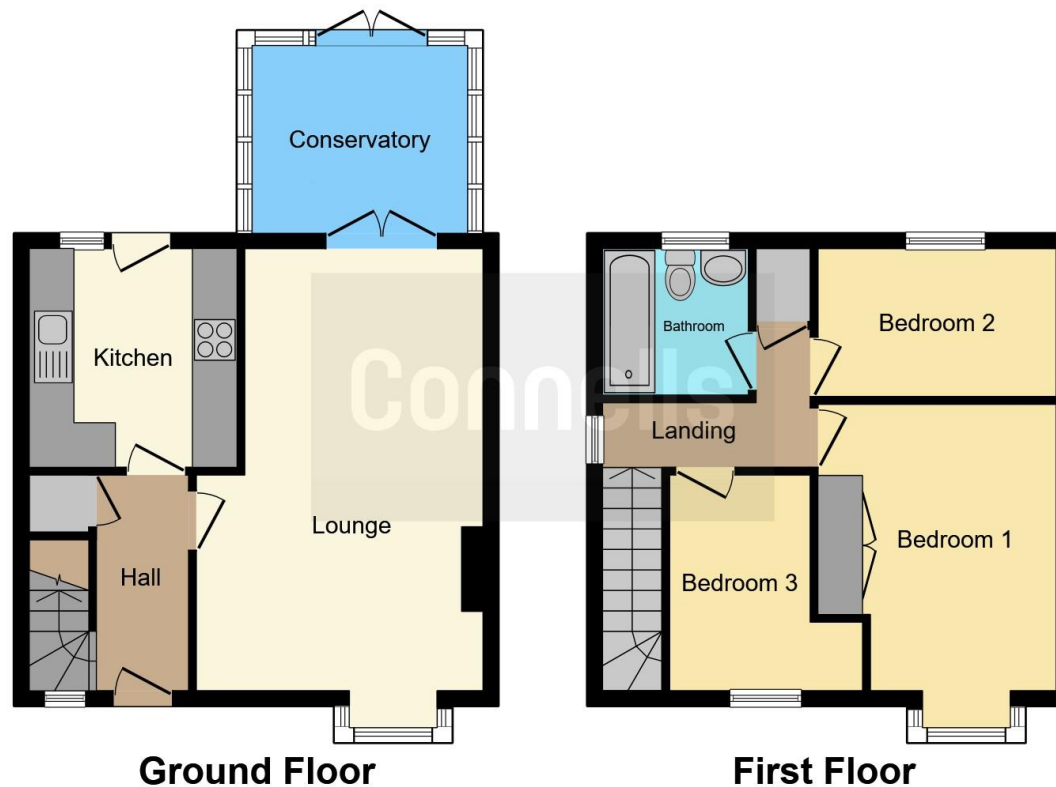
### Front Garden

Gravel, plus patio slabs.









This floor plan is for illustrative purposes only. It is not drawn to scale. Any measurements, floor areas (including any total floor area), openings and orientation are approximate. No details are guaranteed, they cannot be relied upon for any purpose and they do not form part of any agreement. No liability is taken for any error, omission or misstatement. A party must rely upon its own inspection(s). Powered by [www.focalagent.com](http://www.focalagent.com)

To view this property please contact Connells on

**T 01733 314 775**  
**E [peterborough@connells.co.uk](mailto:peterborough@connells.co.uk)**

14 Cowgate  
 PETERBOROUGH PE1 1NA

**EPC Rating: C**

Tenure: Freehold

**view this property online [connells.co.uk/Property/PBO312151](http://connells.co.uk/Property/PBO312151)**



1. MONEY LAUNDERING REGULATIONS Intending purchasers will be asked to produce identification documentation at a later stage and we would ask for your co-operation in order that there will be no delay in agreeing the sale. 2. These particulars do not constitute part or all of an offer or contract. 3. The measurements indicated are supplied for guidance only and as such must be considered incorrect. Potential buyers are advised to recheck measurements before committing to any expense. 4. We have not tested any apparatus, equipment, fixtures, fittings or services and it is in the buyers interest to check the working condition of any appliances.

Connells Residential is registered in England and Wales under company number 1489613, Registered Office is Cumbria House, 16-20 Hockliffe Street, Leighton Buzzard, Bedfordshire, LU7 1GN. VAT Registration Number is 500 2481 05.

**See all our properties at [www.connells.co.uk](http://www.connells.co.uk) | [www.rightmove.co.uk](http://www.rightmove.co.uk) | [www.zoopla.co.uk](http://www.zoopla.co.uk)**

Property Ref: PBO312151 - 0002