



Connells

Lavenham Court  
Peterborough



# Lavenham Court Peterborough PE2 7ZF

for sale guide price  
**£100,000**



## Property Description

Located in the desirable residential area of Botolph Green in Orton Longueville, this well-maintained one-bedroom flat offers a perfect blend of comfort and convenience. The property features a spacious living area, a separate fitted kitchen, a good-sized double bedroom, and a bathroom. The neutral decor throughout makes it move-in ready, while large windows provide plenty of natural light. The flat also benefits from allocated parking, making it a great choice for professionals or commuters. Set in a quiet and well-kept development, with easy access to local amenities, green spaces, and transport links, this home is ideal for first-time buyers, downsizers, or buy-to-let investors.

Well-presented 1-bedroom flat in the sought-after area of Botolph Green, Orton Longueville, offering comfortable living with allocated parking. Ideal for first-time buyers or investors.

## Auctioneer's Comments

This property is offered through Modern Method of Auction. Should you view, offer or bid your data will be shared with the Auctioneer, iamsold Limited. This method requires both parties to complete the transaction within 56 days, allowing buyers to proceed with mortgage finance (subject to lending criteria, affordability and survey).

The buyer is required to sign a reservation agreement and make payment of a non-refundable Reservation Fee of 4.5% of the purchase price including VAT, subject to a minimum of £6600.00 including VAT. This fee is paid in addition to purchase price and will be considered as part of the chargeable consideration for the property in the calculation for stamp duty liability. Buyers will be required to complete an identification process with iamsold and provide proof of how the purchase would be funded.

The property has a Buyer Information Pack containing documents about the property. The documents may not tell you everything you need to know, so you must complete your own due diligence before bidding. A sample of the Reservation Agreement and terms and conditions are contained within this pack. The buyer will also make payment of no more than £349 inc. VAT towards the preparation cost of the pack. Please confirm exact costs with the auctioneer.

The estate agent and auctioneer may recommend the services of other providers to you, in which they will be paid for the referral. These services are optional, and you will be advised of any payment, in writing before any services are accepted. Listing is subject to a start price and undisclosed reserve price that can change.

## Entrance Hall

Door to front, stairs to first floor.

## Lounge

Window to front and electric heater.

## Kitchen

High and low level storage with worktops over, sink/drain, space for washing machine/fridge freezer, oven with electric hob and hood and heater.

## Bedroom One

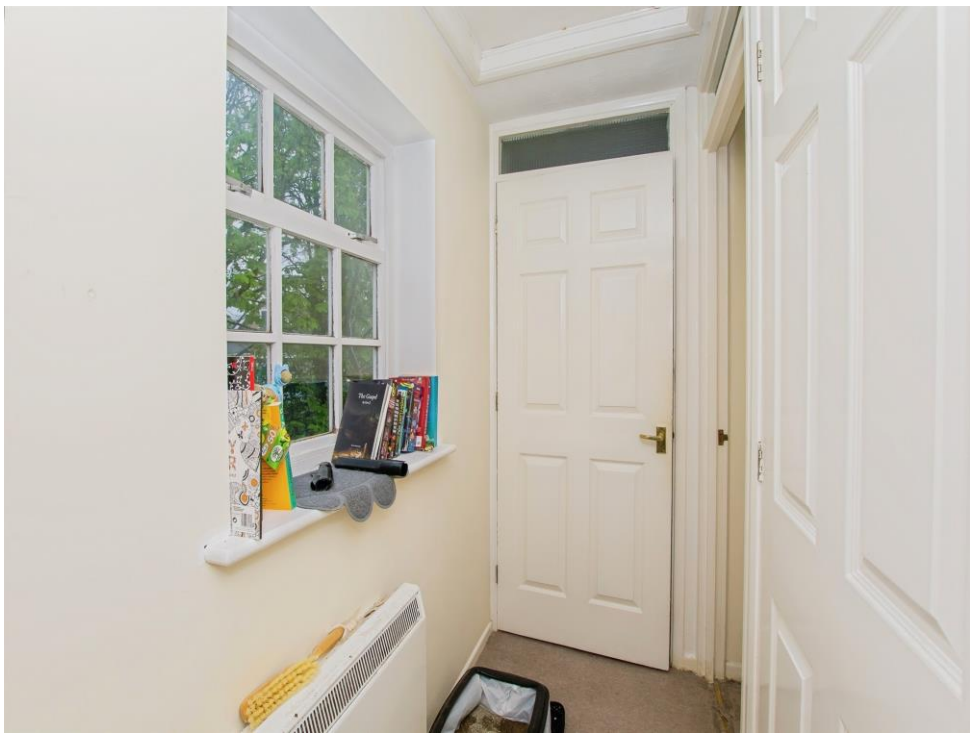
Window to front and electric heater.

## Bathroom

Laminate flooring, tiled walls, WC, wash hand basin and window to rear.

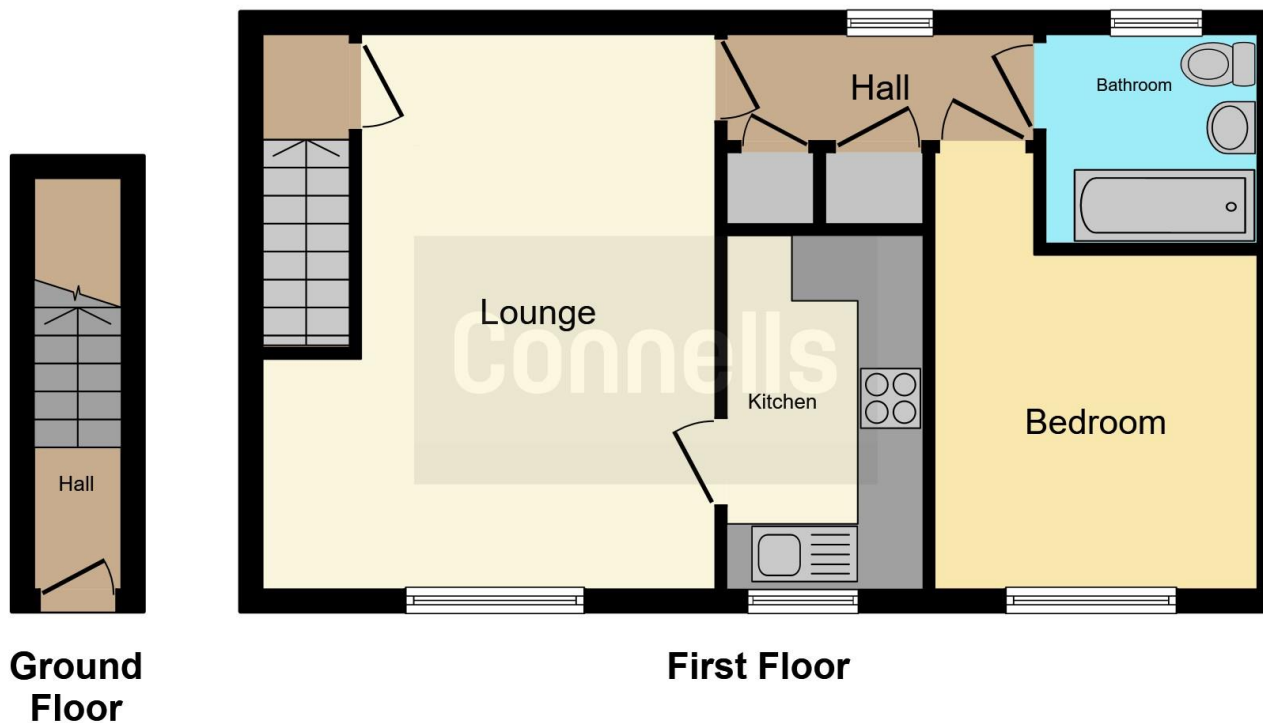












This floor plan is for illustrative purposes only. It is not drawn to scale. Any measurements, floor areas (including any total floor area), openings and orientation are approximate. No details are guaranteed, they cannot be relied upon for any purpose and they do not form part of any agreement. No liability is taken for any error, omission or misstatement. A party must rely upon its own inspection(s). Powered by [www.focalagent.com](http://www.focalagent.com)

To view this property please contact Connells on

**T 01733 314 775**  
**E [peterborough@connells.co.uk](mailto:peterborough@connells.co.uk)**

14 Cowgate  
 PETERBOROUGH PE1 1NA

**EPC Rating: E**

Tenure: Leasehold

**view this property online [connells.co.uk/Property/PBO312012](http://connells.co.uk/Property/PBO312012)**

This is a Leasehold property. We are awaiting further details about the Term of the lease. For further information please contact the branch. Please note additional fees could be incurred for items such as Leasehold packs.



1. MONEY LAUNDERING REGULATIONS Intending purchasers will be asked to produce identification documentation at a later stage and we would ask for your co-operation in order that there will be no delay in agreeing the sale. 2. These particulars do not constitute part or all of an offer or contract. 3. The measurements indicated are supplied for guidance only and as such must be considered incorrect. Potential buyers are advised to recheck measurements before committing to any expense. 4. We have not tested any apparatus, equipment, fixtures, fittings or services and it is in the buyers interest to check the working condition of any appliances.

Connells Residential is registered in England and Wales under company number 1489613, Registered Office is Cumbria House, 16-20 Hockliffe Street, Leighton Buzzard, Bedfordshire, LU7 1GN. VAT Registration Number is 500 2481 05.

**See all our properties at [www.connells.co.uk](http://www.connells.co.uk) | [www.rightmove.co.uk](http://www.rightmove.co.uk) | [www.zoopla.co.uk](http://www.zoopla.co.uk)**

Property Ref: PBO312012 - 0003