





Property Description

Guide Price: £350,000 - £375,000

Connells are proud to present this 4-bedroom, end terraced home located in Eastfield within easy reach of local amenities, schools and transport links. It offers spacious and modern living across three floors, ideal for family life. The layout maximises natural light and space.

On the ground floor, the entrance porch leads to an airy lounge/diner complete with a floating staircase that adds elegance. Downstairs also features a study within the lounge/diner, shower room (perfect for guests). A well equipped kitchen and bright sun room completes the ground floor providing great additional space for entertaining and socialising or relaxing.

Upstairs the family bathroom has a separate walk in shower room, en-suite and dressing room to bedroom one ensuring comfort and privacy. The master situated on the second floor comes with plenty of light and storage.

Outside, the property features a block paved driveway providing ample off road parking, a rear garden and integrated garage,

This home is the perfect blend of functionality and modern convenience.

Entrance Porch

Open plan to lounge/diner, laminate flooring and door to front.

Lounge/Diner

30' 2" x 16' 11" (9.19m x 5.16m)

Tall radiator, carpet and laminate flooring, bay window to the front, floating staircase, brick pillars, spot lights, feature ceiling.

Study

10' 4" x 7' 2" (3.15m x 2.18m)

Wood flooring.

Kitchen

16' 4" x 21' 10" (4.98m x 6.65m)

Tile flooring, sink/drain, double oven with gas hob and hood, tiled walls, space for fridge/freezer, two skylights, high and low level storage with worktops over and spotlights.

Sun Room

22' 2" x 13' 1" (6.76m x 3.99m)

Open plan from kitchen, two patio doors to the rear, tiled flooring and spotlights.

Shower Room

Tiled flooring, shower cubicle, two windows to the side, wash hand basin, WC and radiator.

First Floor

Bedroom Four

12' 2" x 10' 10" (3.71m x 3.30m)

Window to rear, carpet and radiator.

Bedroom Three

10' 1" x 14' 6" (3.07m x 4.42m)

Window to rear, carpet, storage cupboard and radiator.

Bedroom One

15' 4" max x 27' 3" max (4.67m max x 8.31m max)

Two windows, carpet and radiator.

Dressing Room

En-Suite

Shower, tiled flooring and walls, window to front, wash hand basin and WC.

Second Floor

Master Bedroom

28' 2" x 21' 11" (8.59m x 6.68m)

Windows to rear, carpet, radiator, brick walls, two storage cupboards, one with window to the front.

Outside

Rear Garden

Laid to lawn, mature trees and bushes.

Front

Block paved driveway and integral garage.

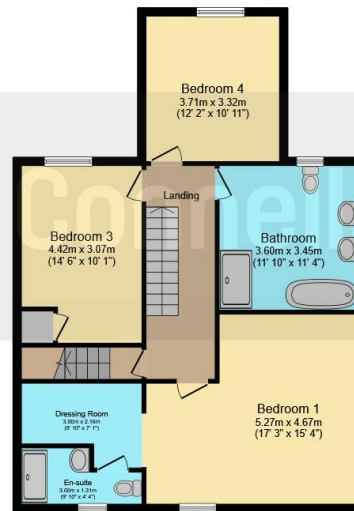




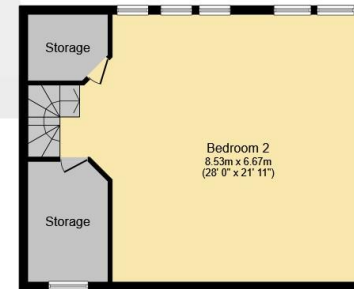




Ground Floor



First Floor



Second Floor

This floor plan is for illustrative purposes only. It is not drawn to scale. Any measurements, floor areas (including any total floor area), openings and orientation are approximate. No details are guaranteed, they cannot be relied upon for any purpose and they do not form part of any agreement. No liability is taken for any error, omission or misstatement. A party must rely upon its own inspection(s). Powered by www.focalagent.com

To view this property please contact Connells on

T 01733 314 775
E peterborough@connells.co.uk

14 Cowgate
 PETERBOROUGH PE1 1NA

EPC Rating: C Council Tax
 Band: C

Tenure: Freehold

check out more properties at connells.co.uk



1. MONEY LAUNDERING REGULATIONS Intending purchasers will be asked to produce identification documentation at a later stage and we would ask for your co-operation in order that there will be no delay in agreeing the sale. 2. These particulars do not constitute part or all of an offer or contract. 3. The measurements indicated are supplied for guidance only and as such must be considered incorrect. Potential buyers are advised to recheck measurements before committing to any expense. 4. We have not tested any apparatus, equipment, fixtures, fittings or services and it is in the buyers interest to check the working condition of any appliances.

Connells Residential is registered in England and Wales under company number 1489613, Registered Office is Cumbria House, 16-20 Hockliffe Street, Leighton Buzzard, Bedfordshire, LU7 1GN. VAT Registration Number is 500 2481 05.

See all our properties at www.connells.co.uk | www.rightmove.co.uk | www.zoopla.co.uk

Property Ref: PBO312020 - 0004