



Linnet

Orton Wistow Peterborough PE2 6XY

for sale
£210,000



Property Description

Situated in the sought-after neighbourhood of Orton Wistow, this delightful two-bedroom semi-detached bungalow is perfect for those seeking a comfortable and well-maintained home. The property features a bright and airy living room, a modern fitted kitchen with ample storage, conservatory, and two generously sized bedrooms. A stylish bathroom completes the interior.

Externally, the bungalow boasts a private rear garden, ideal for outdoor relaxation and entertaining. Located within easy reach of local shops, schools, bus route and Ferry Meadows Country Park, this home also enjoys excellent transport links to Peterborough and surrounding areas.

A charming two-bedroom semi-detached bungalow in the desirable area of Orton Wistow. This well-presented home offers spacious living, kitchen, a private rear garden, conservatory, garage and off-road parking. Ideally located close to local amenities, parks, and excellent transport links.

Entrance Hall

Kitchen

9' 8" x 8' 6" (2.95m x 2.59m)

Laminate flooring, window to front, cooker, gas hob, cooker hood, space for fridge/freezer, space for washing machine, high and low level worktops over, stainless steel sink/drain, integrated dishwasher, spot lights.

Lounge

16' 1" x 10' 10" (4.90m x 3.30m)

Laminate flooring, radiator, spot lights door to rear into conservatory.

Conservatory

8' 2" x 8' 2" (2.49m x 2.49m)

Vinyl flooring, door to side.

Bedroom One

11' 2" x 10' 10" (3.40m x 3.30m)

Window to rear, carpet, fitted wardrobes, radiator.

Bedroom Two

8' 6" x 7' 10" (2.59m x 2.39m)

Window to front, carpet, radiator.

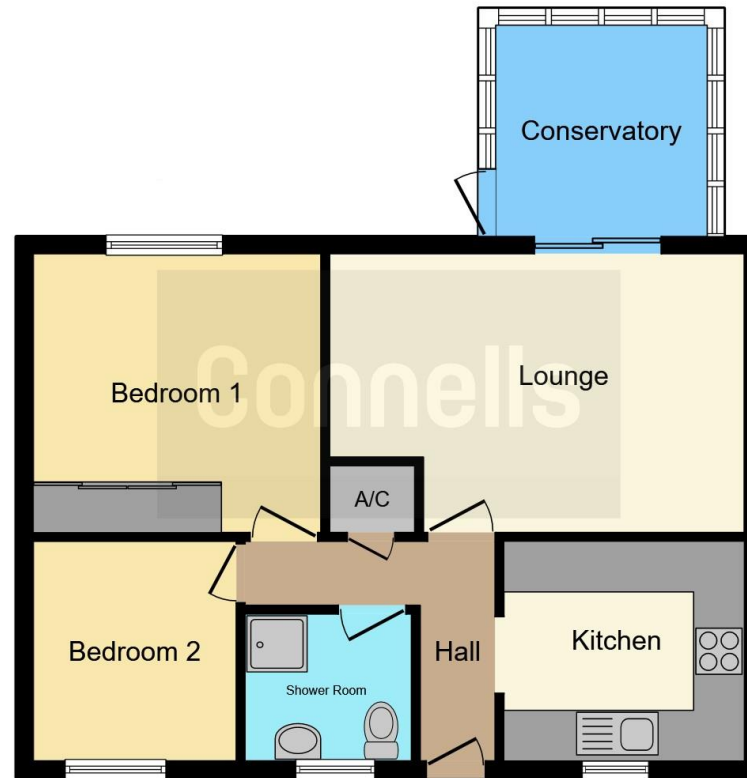
Bathroom

Shower, WC, wash hand basin, window to front, tiled flooring.









This floor plan is for illustrative purposes only. It is not drawn to scale. Any measurements, floor areas (including any total floor area), openings and orientation are approximate. No details are guaranteed, they cannot be relied upon for any purpose and they do not form part of any agreement. No liability is taken for any error, omission or misstatement. A party must rely upon its own inspection(s). Powered by www.focalagent.com

To view this property please contact Connells on

T 01733 314 775
E peterborough@connells.co.uk

14 Cowgate
 PETERBOROUGH PE1 1NA

EPC Rating: C

Tenure: Freehold

view this property online connells.co.uk/Property/PBO311982



1. MONEY LAUNDERING REGULATIONS Intending purchasers will be asked to produce identification documentation at a later stage and we would ask for your co-operation in order that there will be no delay in agreeing the sale. 2. These particulars do not constitute part or all of an offer or contract. 3. The measurements indicated are supplied for guidance only and as such must be considered incorrect. Potential buyers are advised to recheck measurements before committing to any expense. 4. We have not tested any apparatus, equipment, fixtures, fittings or services and it is in the buyers interest to check the working condition of any appliances.

Connells Residential is registered in England and Wales under company number 1489613, Registered Office is Cumbria House, 16-20 Hockliffe Street, Leighton Buzzard, Bedfordshire, LU7 1GN. VAT Registration Number is 500 2481 05.

See all our properties at www.connells.co.uk | www.rightmove.co.uk | www.zoopla.co.uk

Property Ref: PBO311982 - 0011