



Connells

Ellindon
Bretton PETERBOROUGH



Property Description

Situated in Bretton is this three bedroom, end of terraced family home. The ground floor comprises of an entrance hall, cloakroom, lounge and kitchen. To the first floor there are three bedrooms and the family bathroom. Outside is an enclosed rear garden and garage to the front.

The property is close to local amenities, a short drive to the City Centre, Peterborough City Hospital, Heltwate School (0.1 miles), Iqra Academy (0.4 miles), Ravensthorpe Primary School (1.2 miles) and Lime Academy Watergall (1.0 miles).

Entrance Hall

Laminate flooring, radiator, large storage cupboard.

Wc

Window to front, tiled flooring, wash hand basin, WC and extractor fan.

Lounge

11' 8" x 17' 9" (3.56m x 5.41m)

Large window to the rear, patio door to rear, laminate flooring and radiator.

Kitchen

17' 5" x 11' 6" max (5.31m x 3.51m max)

Window to front, vinyl flooring, radiator, space for washer/dryer, integrated fridge/freezer, sink/drainer with mixer tap, wall mounted boiler, oven with electric hob and hood, tiled walls, high and low level storage with worktops over.

First Floor Landing

Storage cupboard.

Bedroom One

16' 5" max x 11' 8" max (5.00m max x 3.56m max)

Window to rear, carpet and radiator.

Bedroom Two

8' 8" x 11' 7" (2.64m x 3.53m)

Window to rear, carpet and radiator.

Bedroom Three

11' 8" max x 14' 9" max (3.56m max x 4.50m max)

Window to front, carpet and radiator.

Bathroom

Window to front, extractor fan, bath with shower over, airing cupboard, wash hand basin, WC, tiled flooring and radiator.

Outside

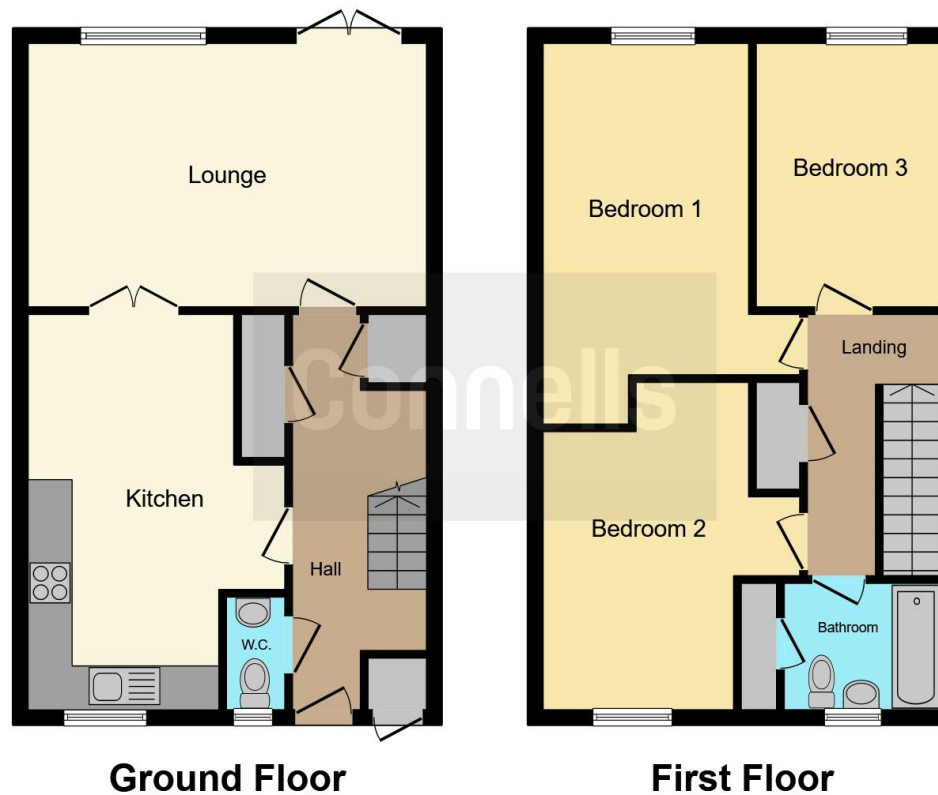
Rear Garden

Laid to lawn, patio area and matured shrubs and bushes.









This floor plan is for illustrative purposes only. It is not drawn to scale. Any measurements, floor areas (including any total floor area), openings and orientation are approximate. No details are guaranteed, they cannot be relied upon for any purpose and they do not form part of any agreement. No liability is taken for any error, omission or misstatement. A party must rely upon its own inspection(s). Powered by www.focalagent.com

To view this property please contact Connells on

T 01733 314 775
E peterborough@connells.co.uk

14 Cowgate
 PETERBOROUGH PE1 1NA

EPC Rating: D

view this property online connells.co.uk/Property/PBO311931

Tenure: Freehold



1. MONEY LAUNDERING REGULATIONS Intending purchasers will be asked to produce identification documentation at a later stage and we would ask for your co-operation in order that there will be no delay in agreeing the sale. 2. These particulars do not constitute part or all of an offer or contract. 3. The measurements indicated are supplied for guidance only and as such must be considered incorrect. Potential buyers are advised to recheck measurements before committing to any expense. 4. We have not tested any apparatus, equipment, fixtures, fittings or services and it is in the buyers interest to check the working condition of any appliances.

Connells Residential is registered in England and Wales under company number 1489613, Registered Office is Cumbria House, 16-20 Hockliffe Street, Leighton Buzzard, Bedfordshire, LU7 1GN. VAT Registration Number is 500 2481 05.

See all our properties at www.connells.co.uk | www.rightmove.co.uk | www.zoopla.co.uk

Property Ref: PBO311931 - 0003