



Connells

Finchfield
Peterborough

Finchfield Peterborough PE1 4YG

for sale offers in excess of
£190,000



Property Description

Located in Parnwell is this semi detached bungalow. The property comprises of an entrance porch, hallway, good sized lounge/diner, kitchen, two bedrooms, bathroom, rear garden, off road parking and garage. The property is close to Blue Diamond Garden Centre, local amenities, a short drive to the City Centre and Train Station and convenient transport links. There is also no onward chain.

Entrance Porch

Storage cupboard, door to front, door to lounge and radiator.

Hallway

Storage cupboard.

Lounge

15' 4" x 19' 9" max (4.67m x 6.02m max)
Patio doors to side, window to front, carpet and radiator.

Kitchen

Windows to side and rear, space for washing machine, high and low level storage with worktops over, space for fridge/freezer, oven with gas hob and hood, stainless steel sink/drainers with mixer tap,

Bedroom One

10' 6" x 8' 3" (3.20m x 2.51m)
Window to front, carpet and radiator.

Bedroom Two

13' 8" x 9' 10" (4.17m x 3.00m)
Window to side, carpet and radiator.

Bathroom

Bath with shower over, wash hand basin, WC, vinyl flooring and extractor fan.

Outside

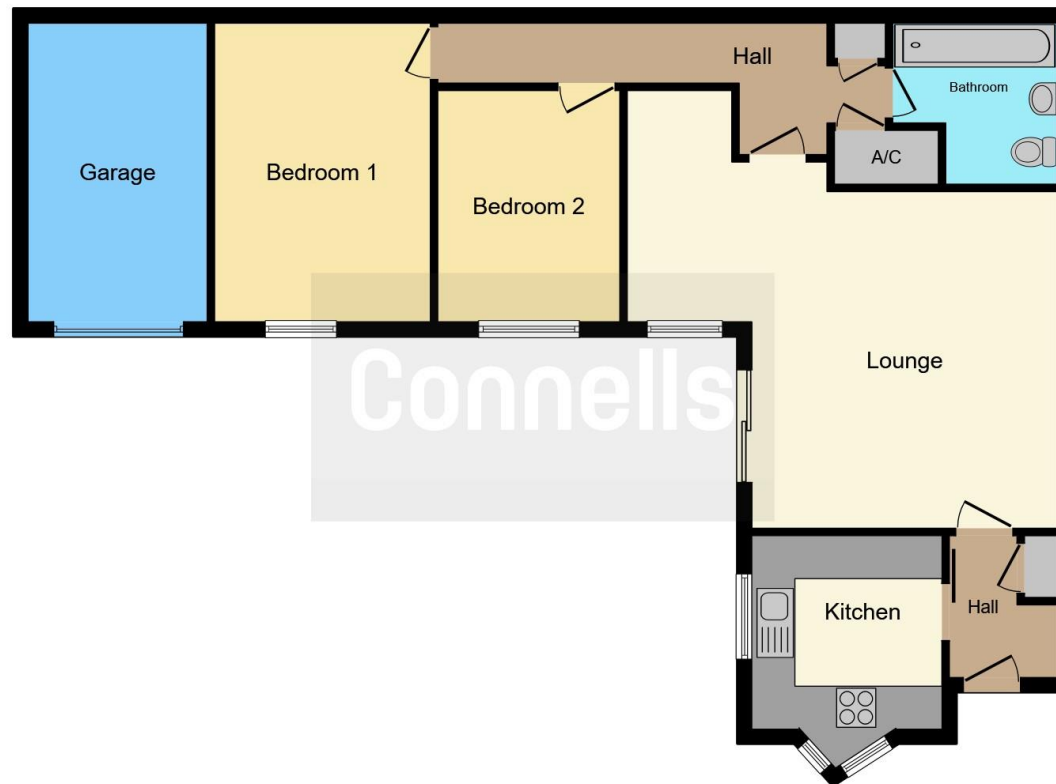
Rear Garden

Courtyard, patio and slabs, two gates entrances.









This floor plan is for illustrative purposes only. It is not drawn to scale. Any measurements, floor areas (including any total floor area), openings and orientation are approximate. No details are guaranteed, they cannot be relied upon for any purpose and they do not form part of any agreement. No liability is taken for any error, omission or misstatement. A party must rely upon its own inspection(s). Powered by www.focalagent.com

To view this property please contact Connells on

T 01733 314 775
E peterborough@connells.co.uk

14 Cowgate
 PETERBOROUGH PE1 1NA

EPC Rating: D Council Tax
 Band: B

Tenure: Freehold

view this property online connells.co.uk/Property/PBO311909



1. MONEY LAUNDERING REGULATIONS Intending purchasers will be asked to produce identification documentation at a later stage and we would ask for your co-operation in order that there will be no delay in agreeing the sale. 2. These particulars do not constitute part or all of an offer or contract. 3. The measurements indicated are supplied for guidance only and as such must be considered incorrect. Potential buyers are advised to recheck measurements before committing to any expense. 4. We have not tested any apparatus, equipment, fixtures, fittings or services and it is in the buyers interest to check the working condition of any appliances.

Connells Residential is registered in England and Wales under company number 1489613, Registered Office is Cumbria House, 16-20 Hockliffe Street, Leighton Buzzard, Bedfordshire, LU7 1GN. VAT Registration Number is 500 2481 05.

See all our properties at www.connells.co.uk | www.rightmove.co.uk | www.zoopla.co.uk

Property Ref: PBO311909 - 0006