



**Connells**

Farriers Court  
Orton Longueville Peterborough



# Farriers Court Orton Longueville Peterborough PE2 7DY

for sale offers in excess of  
**£190,000**



## Property Description

Situated in Orton Longueville, within a quiet cul-de-sac position is this fantastic two bedroom home is perfect for investors/first time buyers and home movers alike located close by to Nene Valley Primary School as well as local amenities and convenient transport links. The home comprises in brief of an entrance hallway, lounge and kitchen. Upstairs are two bedrooms and the family bathroom. Outside is a private rear garden with patio area and shed. The mid terraced home also benefits from two allocated parking spaces.

Benefiting from two parking spaces, lounge and kitchen. This two bedroom mid terraced home is close to Nene Valley Primary School as well as local amenities and convenient transport links. Call to book your viewing today 01733 314775.

## Entrance Porch

Wooden flooring.

## Lounge

10' 4" x 15' 5" ( 3.15m x 4.70m )  
Window to front, carpet and radiator.

## Kitchen

10' 4" x 11' 8" ( 3.15m x 3.56m )  
High and low level storage with worktops over, window to rear, electric oven gas hob and cooker hood, vinyl flooring, space for fridge freezer, space for washing machine, door to rear and stainless steel sink/drain.

## First Floor

## Landing

Airing cupboard housing boiler and carpet.

## Bedroom One

9' 10" x 10' 4" ( 3.00m x 3.15m )  
Window to front, radiator and carpet.

## Bedroom Two

5' 10" x 10' 4" ( 1.78m x 3.15m )  
Window to rear, carpet and radiator.

## Bathroom

Bath with shower over, extractor fan, vinyl flooring, radiator, wash hand basin and WC.

## Outside

### Rear Garden

Low maintenance gravel, side access, patio and shed.

### Parking

Two spaces.

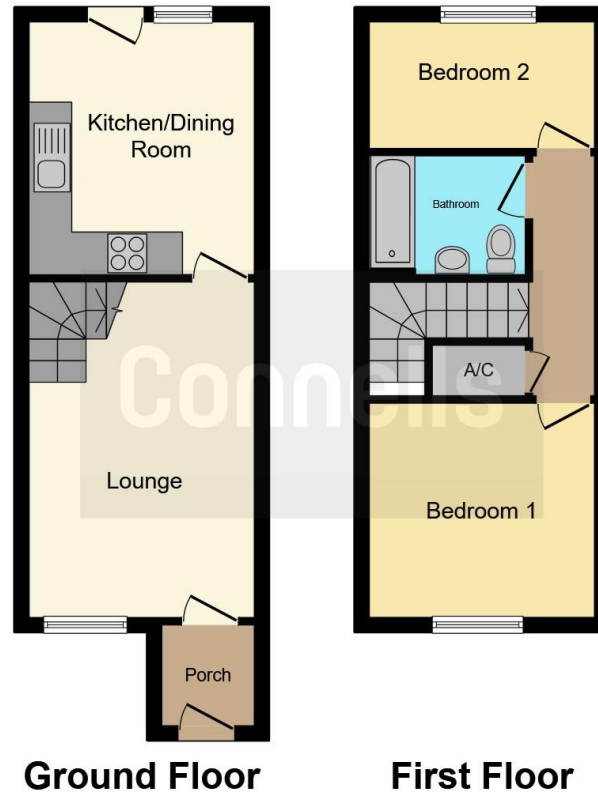












This floor plan is for illustrative purposes only. It is not drawn to scale. Any measurements, floor areas (including any total floor area), openings and orientation are approximate. No details are guaranteed, they cannot be relied upon for any purpose and they do not form part of any agreement. No liability is taken for any error, omission or misstatement. A party must rely upon its own inspection(s). Powered by [www.focalagent.com](http://www.focalagent.com)

To view this property please contact Connells on

**T 01733 314 775**  
**E [peterborough@connells.co.uk](mailto:peterborough@connells.co.uk)**

14 Cowgate  
 PETERBOROUGH PE1 1NA

**EPC Rating: D**

Tenure: Freehold

**view this property online [connells.co.uk/Property/PBO311820](http://connells.co.uk/Property/PBO311820)**



1. MONEY LAUNDERING REGULATIONS Intending purchasers will be asked to produce identification documentation at a later stage and we would ask for your co-operation in order that there will be no delay in agreeing the sale. 2. These particulars do not constitute part or all of an offer or contract. 3. The measurements indicated are supplied for guidance only and as such must be considered incorrect. Potential buyers are advised to recheck measurements before committing to any expense. 4. We have not tested any apparatus, equipment, fixtures, fittings or services and it is in the buyers interest to check the working condition of any appliances.

Connells Residential is registered in England and Wales under company number 1489613, Registered Office is Cumbria House, 16-20 Hockliffe Street, Leighton Buzzard, Bedfordshire, LU7 1GN. VAT Registration Number is 500 2481 05.

**See all our properties at [www.connells.co.uk](http://www.connells.co.uk) | [www.rightmove.co.uk](http://www.rightmove.co.uk) | [www.zoopla.co.uk](http://www.zoopla.co.uk)**

Property Ref: PBO311820 - 0007