



Connells

Tennyson Road
Peterborough



Property Description

ATTENTION INVESTORS - Three bedroom property is perfect for investors, located close by to Fulbridge Academy, as well as local amenities and convenient transport links. The home comprises in brief of an entrance hall leading through to the lounge, kitchen, rear hallway, WC and utility room. Upstairs there are three bedrooms and the family bathroom. Outside is an enclosed rear garden and to the front is off road parking.

ATTENTION INVESTORS - Benefiting from off road parking, utility room, kitchen, lounge, downstairs WC and bathroom. This three bedroom semi detached property is close to Fulbridge Academy, as well as local amenities and convenient transport links.

Entrance Hall

Door to front, door to lounge and stairs to first floor.

Cloakroom

WC.

Lounge

11' x 16' 1" (3.35m x 4.90m)
Window to rear, radiator, coving to textured ceiling, and carpet.

Kitchen

7' 11" x 11' 5" (2.41m x 3.48m)
Windows to front and side, high and low level storage with worktops over, oven gas hob, cooker hood, tiled splashbacks, stainless steel sink/drainer with mixer tap, laminate flooring, radiator and breakfast bar.

Rear Hall

Door to WC, window to side.

Utility Room

Door to rear.

First Floor

Bedroom One

10' 11" x 8' 4" (3.33m x 2.54m)
Window to rear, radiator and carpet.

Bedroom Two

8' 1" x 12' 10" (2.46m x 3.91m)
Window to rear, radiator and carpet.

Bedroom Three

10' 9" x 7' 8" (3.28m x 2.34m)
Window to front, radiator and carpet.

Bathroom

Window to side, tiled walls, bath, wash hand basin and WC.

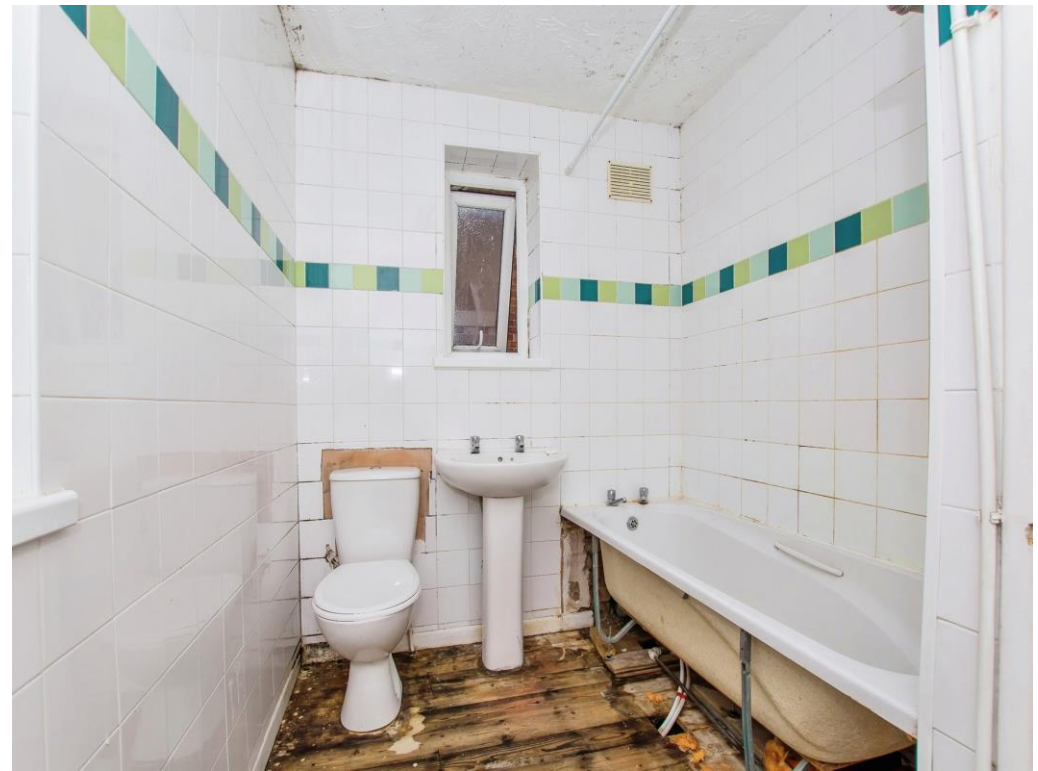
Outside

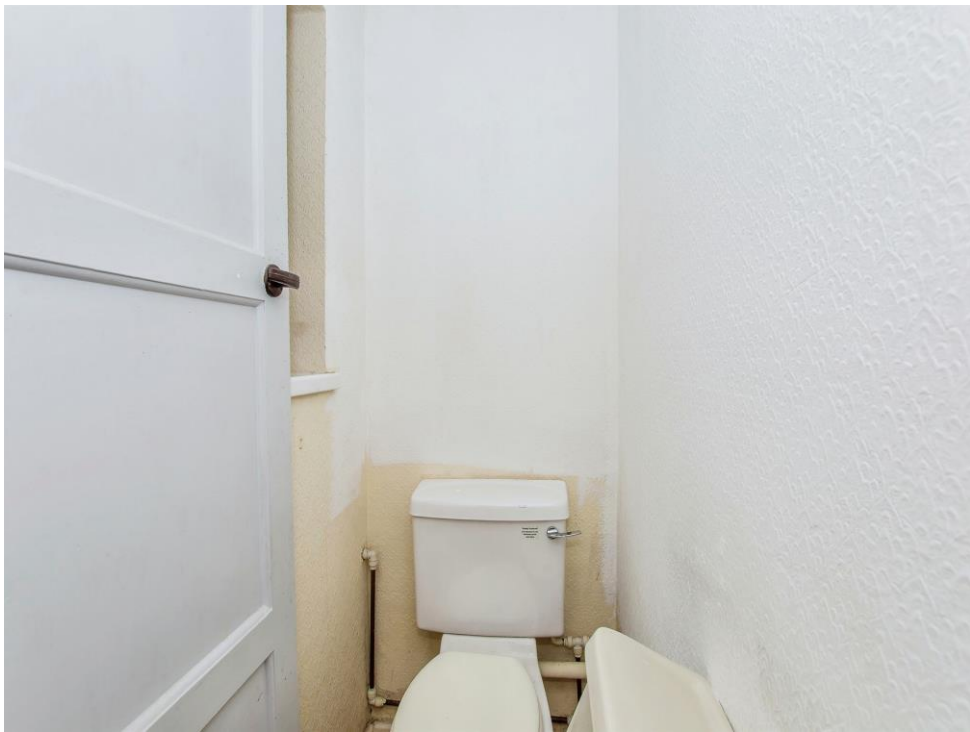
Rear Garden

Enclosed, laid to lawn and patio.

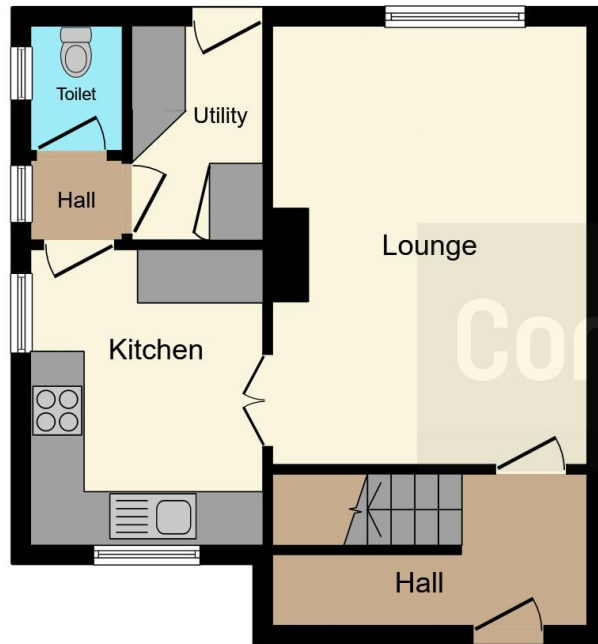
Front

Off road parking.









Ground Floor



First Floor

This floor plan is for illustrative purposes only. It is not drawn to scale. Any measurements, floor areas (including any total floor area), openings and orientation are approximate. No details are guaranteed, they cannot be relied upon for any purpose and they do not form part of any agreement. No liability is taken for any error, omission or misstatement. A party must rely upon its own inspection(s). Powered by www.focalagent.com

To view this property please contact Connells on

T 01733 314 775
E peterborough@connells.co.uk

14 Cowgate
PETERBOROUGH PE1 1NA

EPC Rating: C

Tenure: Freehold

view this property online connells.co.uk/Property/PBO311693



1. MONEY LAUNDERING REGULATIONS Intending purchasers will be asked to produce identification documentation at a later stage and we would ask for your co-operation in order that there will be no delay in agreeing the sale. 2. These particulars do not constitute part or all of an offer or contract. 3. The measurements indicated are supplied for guidance only and as such must be considered incorrect. Potential buyers are advised to recheck measurements before committing to any expense. 4. We have not tested any apparatus, equipment, fixtures, fittings or services and it is in the buyers interest to check the working condition of any appliances.

Connells Residential is registered in England and Wales under company number 1489613, Registered Office is Cumbria House, 16-20 Hockliffe Street, Leighton Buzzard, Bedfordshire, LU7 1GN. VAT Registration Number is 500 2481 05.

See all our properties at www.connells.co.uk | www.rightmove.co.uk | www.zoopla.co.uk

Property Ref: PBO311693 - 0002