



Connells

Brynmore  
Bretton Peterborough



## Property Description

Situated in Bretton is this fantastic three bedroom family home which is perfect for investors/first time buyers and home movers alike. Located close by to Lime Academy, Orthopaedics & Spine Specialist Hospital, Planet Ice as well as local amenities and convenient transport links. The home comprises in brief of the cloakroom, study, conservatory, utility room, lounge and kitchen. Upstairs is three bedrooms and bathroom. Outside is a private rear garden. The mid terraced home also benefits from communal parking.

Benefiting from cloakroom, study, conservatory, utility room, lounge and kitchen, three bedrooms, bathroom and rear garden. Located close by to Lime Academy, Orthopaedics & Spine Specialist Hospital, Planet Ice as well as local amenities and convenient transport links.

## Cloakroom

Double glazed window to the side, tiled flooring, vanity wash hand basin and WC.

## Study

8' 9" x 8' 11" ( 2.67m x 2.72m )

Loft access, double glazed window to the side and radiator.

## Lounge

15' 3" x 11' 3" ( 4.65m x 3.43m )

Double glazed sliding doors to the rear and radiator.

## Kitchen

10' 8" x 17' 8" ( 3.25m x 5.38m )

Double glazed window to the front, laminate flooring, radiator, space for dishwasher and American style fridge/freezer, integrated oven, gas hob and hood. High white gloss low level storage with black worktops over.

## Utility Room

9' 8" x 8' 7" ( 2.95m x 2.62m )

Double glazed door and window to rear, laminate flooring and plumbing and electric for washing/dryer.

## Conservatory

Double glazed French doors and windows to the rear and laminate flooring.

## First Floor

## Landing

Double glazed window to the front, airing cupboard and large storage cupboard.

## Bedroom One

11' 6" x 9' 10" ( 3.51m x 3.00m )

Double glazed window to the rear and radiator.

## Bedroom Two

10' 11" x 11' 7" ( 3.33m x 3.53m )

Double glazed window to rear and radiator.

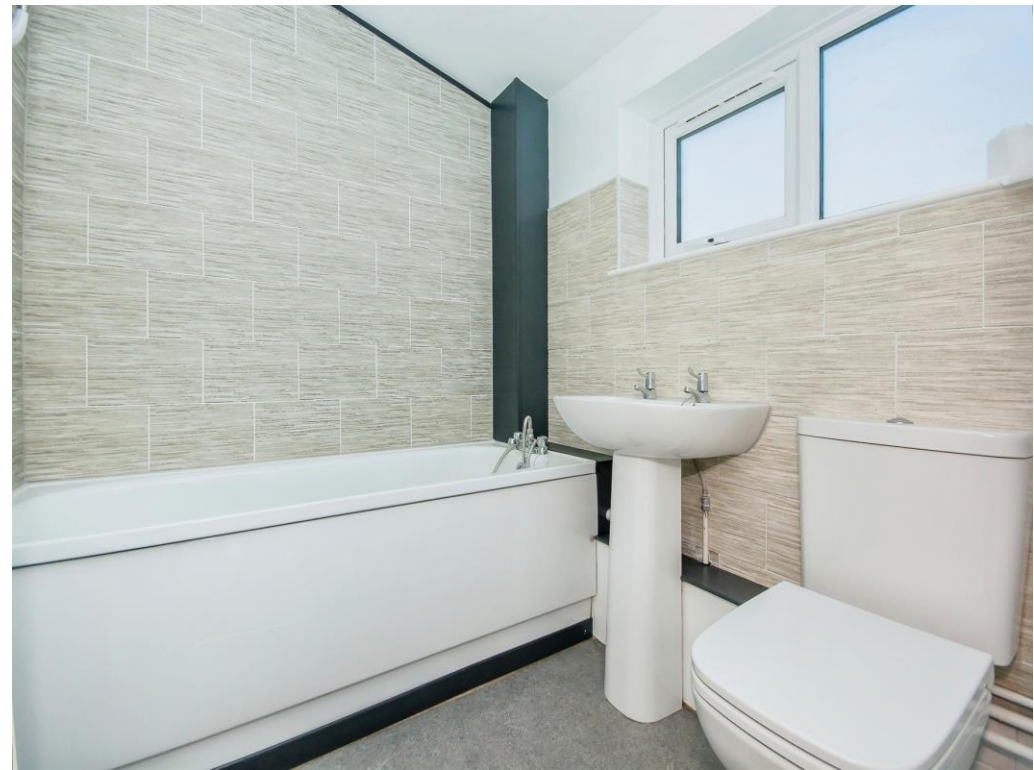
## Bedroom Three

11' 7" x 5' 4" ( 3.53m x 1.63m )

Double glazed window to the rear, radiator and loft access.

## Bathroom

Double glazed obscure window to the front, heated towel rail, bath with electric shower over, wash hand basin and WC.



## Outside

### Rear Garden

Gravel and patio and electric sockets.

### Front Garden

Tap.









This floor plan is for illustrative purposes only. It is not drawn to scale. Any measurements, floor areas (including any total floor area), openings and orientation are approximate. No details are guaranteed, they cannot be relied upon for any purpose and they do not form part of any agreement. No liability is taken for any error, omission or misstatement. A party must rely upon its own inspection(s). Powered by [www.focalagent.com](http://www.focalagent.com)

To view this property please contact Connells on

**T 01733 314 775**  
**E [peterborough@connells.co.uk](mailto:peterborough@connells.co.uk)**

14 Cowgate  
 PETERBOROUGH PE1 1NA

**EPC Rating: F**

Tenure: Freehold

**view this property online [connells.co.uk/Property/PBO310844](http://connells.co.uk/Property/PBO310844)**



1. MONEY LAUNDERING REGULATIONS Intending purchasers will be asked to produce identification documentation at a later stage and we would ask for your co-operation in order that there will be no delay in agreeing the sale. 2. These particulars do not constitute part or all of an offer or contract. 3. The measurements indicated are supplied for guidance only and as such must be considered incorrect. Potential buyers are advised to recheck measurements before committing to any expense. 4. We have not tested any apparatus, equipment, fixtures, fittings or services and it is in the buyers interest to check the working condition of any appliances.

Connells Residential is registered in England and Wales under company number 1489613, Registered Office is Cumbria House, 16-20 Hockliffe Street, Leighton Buzzard, Bedfordshire, LU7 1GN. VAT Registration Number is 500 2481 05.

**See all our properties at [www.connells.co.uk](http://www.connells.co.uk) | [www.rightmove.co.uk](http://www.rightmove.co.uk) | [www.zoopla.co.uk](http://www.zoopla.co.uk)**

Property Ref: PBO310844 - 0003