



**Connells**

Aldsworth Close  
Peterborough





## Property Description

A sizeable semi detached home, within a quiet cul-de-sac position, this fantastic four bedroom family home is perfect for investors/first time buyers/home movers alike, located close by to Newark Hill Primary Academy and Lime Academy as well as local amenities and convenient transport links. The home comprises in brief of an entrance hall, lounge, kitchen/diner, utility room and conservatory. Upstairs are four bedrooms and the family bathroom. Outside is an enclosed rear garden, laid to lawn with patio area. The semi-detached home also benefits from a driveway and garage.

Benefiting from a garage, kitchen/diner, lounge, utility room, downstairs WC and conservatory. This four bedroom, semi detached home is close by to Newark Hill Primary Academy and Lime Academy as well as local amenities and convenient transport links. The property is being sold with no onward chain.

## Entrance Hall

Door to front, UPVC window to side, stairs to first floor and radiator.

## Cloakroom

UPVC window to rear, radiator, pedestal wash hand basin, low level WC and radiator.

## Lounge

14' 6" x 11' 2" ( 4.42m x 3.40m )  
Measurements are maximum - UPVC window to front, coving and radiator.

## Kitchen

17' 3" x 9' 7" ( 5.26m x 2.92m )  
UPVC window to rear, radiator, high and low level storage with worktops over, double integrated oven, induction hob, display, cooker hood, stainless steel sink/drainer with mixer tap, tiled splashbacks, spot lights, sliding double doors to conservatory.

## Utility Room

9' 10" x 7' 10" ( 3.00m x 2.39m )  
UPVC window to front, high and low level storage.

## Conservatory

7' 11" x 9' 8" ( 2.41m x 2.95m )  
UPVC windows and double door to rear.

## First Floor

## Landing

Loft access and airing cupboard.

## Bedroom One

13' 8" x 10' ( 4.17m x 3.05m )

UPVC window to front and radiator.

## Bedroom Two

UPVC window to rear and radiator.

## Bedroom Three

UPVC window to front, storage and radiator.

## Bedroom Four

9' 10" x 7' 10" ( 3.00m x 2.39m )

UPVC window to front and radiator.

## Bathroom

Two UPVC windows to rear, radiator, pedestal wash hand basin, panelled bath with shower over, WC, heated towel rail.

## Outside

### Rear Garden

Enclosed rear garden, laid to lawn with patio area.

### Garage

Up and over door.

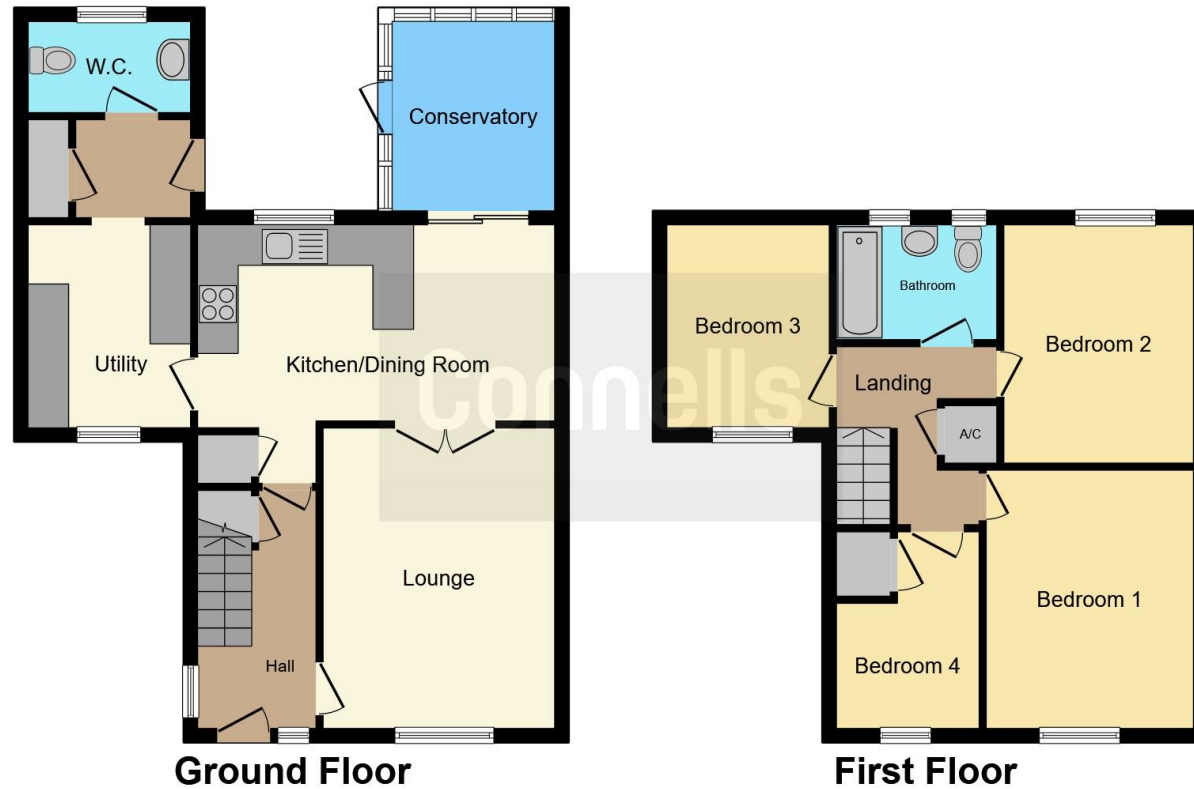












This floor plan is for illustrative purposes only. It is not drawn to scale. Any measurements, floor areas (including any total floor area), openings and orientation are approximate. No details are guaranteed, they cannot be relied upon for any purpose and they do not form part of any agreement. No liability is taken for any error, omission or misstatement. A party must rely upon its own inspection(s). Powered by [www.focalagent.com](http://www.focalagent.com)

To view this property please contact Connells on

**T 01733 314 775**  
**E [peterborough@connells.co.uk](mailto:peterborough@connells.co.uk)**

14 Cowgate  
 PETERBOROUGH PE1 1NA

**EPC Rating: Awaited**

Tenure: Freehold

**view this property online [connells.co.uk/Property/PBO311567](http://connells.co.uk/Property/PBO311567)**



1. MONEY LAUNDERING REGULATIONS Intending purchasers will be asked to produce identification documentation at a later stage and we would ask for your co-operation in order that there will be no delay in agreeing the sale. 2. These particulars do not constitute part or all of an offer or contract. 3. The measurements indicated are supplied for guidance only and as such must be considered incorrect. Potential buyers are advised to recheck measurements before committing to any expense. 4. We have not tested any apparatus, equipment, fixtures, fittings or services and it is in the buyers interest to check the working condition of any appliances.

Connells Residential is registered in England and Wales under company number 1489613, Registered Office is Cumbria House, 16-20 Hockliffe Street, Leighton Buzzard, Bedfordshire, LU7 1GN. VAT Registration Number is 500 2481 05.

**See all our properties at [www.connells.co.uk](http://www.connells.co.uk) | [www.rightmove.co.uk](http://www.rightmove.co.uk) | [www.zoopla.co.uk](http://www.zoopla.co.uk)**

Property Ref: PBO311567 - 0002

Awaiting Photograph