



Connells

Boswell Close
Peterborough



Property Description

Situated in New England this fantastic two/three bedroom home within a cul-de-sac location, is perfect for investors/first time buyers alike, located close by to Fulbridge Academy as well as local amenities and convenient transport links. The home comprises in brief of a rear hall, entrance hallway, cloakroom, lounge kitchen. Upstairs are three bedrooms and the bathroom. Outside is a private north/east facing garden with a patio area. The semi detached home also benefits from a garage and driveway.

Two/three bedroom home is perfect for investors/first time buyers alike, located close by to Fulbridge Academy as well as local amenities and convenient transport links. The home comprises in brief of a rear hall, entrance hallway, cloakroom, lounge kitchen. Upstairs are three bedrooms.

Rear Hall

Entrance Hall

Under stairs cupboard, carpet, radiator and double glazed window to the front.

Cloakroom

Double glazed window to the side, vinyl flooring wash hand basin and WC.

Lounge

15' 5" x 10' 10" (4.70m x 3.30m)
Double glazed window to the front, radiator and carpet.

Kitchen

13' 11" x 8' 10" (4.24m x 2.69m)
Double glazed window to the rear, vinyl flooring and radiator.

First Floor

Landing

Double glazed window to the side and carpet.

Bedroom One

10' 10" x 11' 7" (3.30m x 3.53m)
Measurements include recess - Double glazed window to the rear, carpet and radiator.

Bedroom Two

12' 10" x 10' 10" (3.91m x 3.30m)
Double glazed window to the front, carpet and radiator.

Bedroom Three

6' x 6' 1" (1.83m x 1.85m)

Double glazed window to the side, radiator and wood laminate flooring.

Bathroom

5' 6" x 7' (1.68m x 2.13m)

Double glazed window to the rear, vinyl flooring, radiator, bath, WC and wash hand basin.

Outside

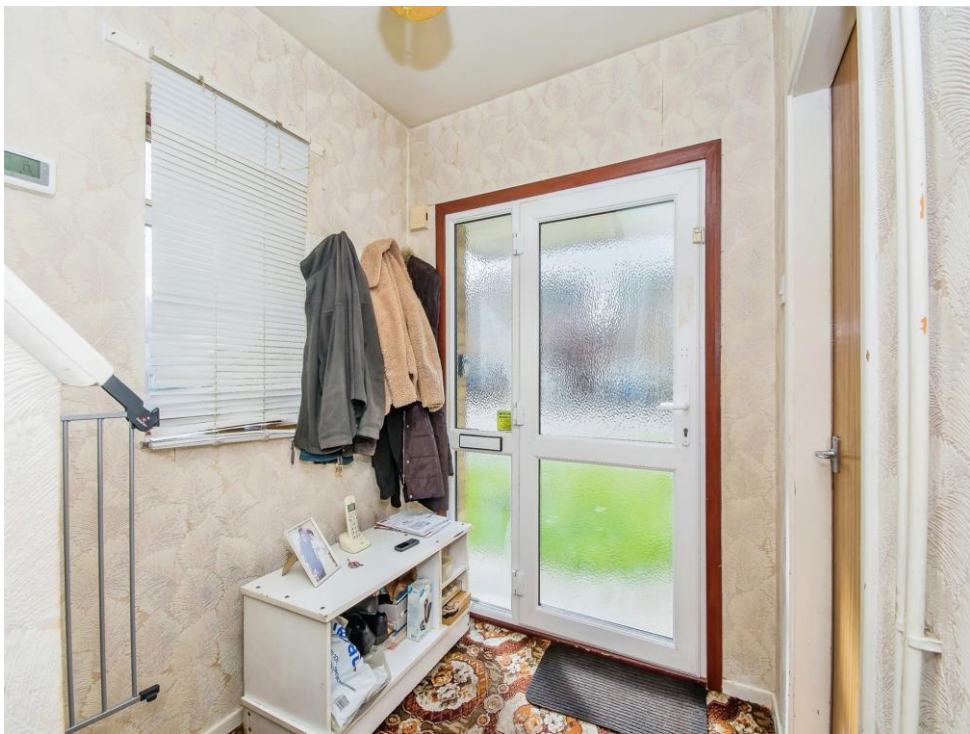
Rear Garden

North/east facing, lawn, patio area and outside tap.

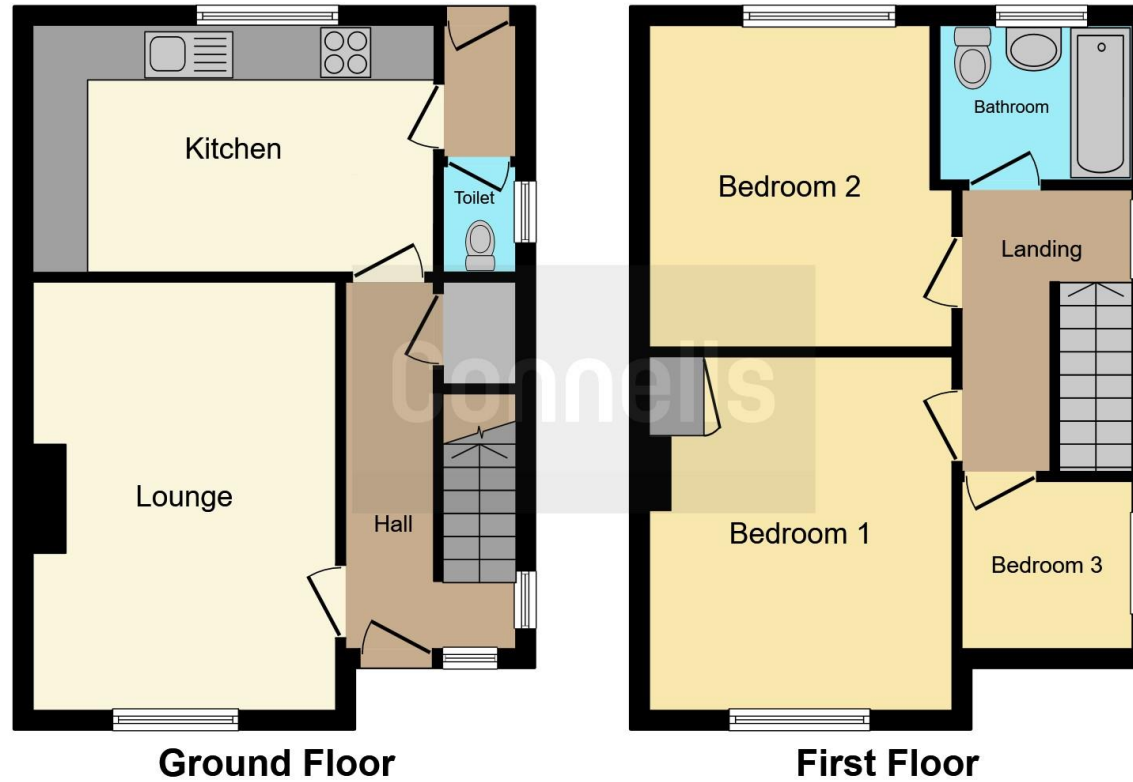
Garage

Storage cupboard, electric and lighting, up and over door to front.









This floor plan is for illustrative purposes only. It is not drawn to scale. Any measurements, floor areas (including any total floor area), openings and orientation are approximate. No details are guaranteed, they cannot be relied upon for any purpose and they do not form part of any agreement. No liability is taken for any error, omission or misstatement. A party must rely upon its own inspection(s). Powered by www.focalagent.com

To view this property please contact Connells on

T 01733 314 775
E peterborough@connells.co.uk

14 Cowgate
 PETERBOROUGH PE1 1NA

EPC Rating: C

Tenure: Freehold

[check out more properties at connells.co.uk](http://www.connells.co.uk)



1. MONEY LAUNDERING REGULATIONS Intending purchasers will be asked to produce identification documentation at a later stage and we would ask for your co-operation in order that there will be no delay in agreeing the sale. 2. These particulars do not constitute part or all of an offer or contract. 3. The measurements indicated are supplied for guidance only and as such must be considered incorrect. Potential buyers are advised to recheck measurements before committing to any expense. 4. We have not tested any apparatus, equipment, fixtures, fittings or services and it is in the buyers interest to check the working condition of any appliances.

Connells Residential is registered in England and Wales under company number 1489613, Registered Office is Cumbria House, 16-20 Hockliffe Street, Leighton Buzzard, Bedfordshire, LU7 1GN. VAT Registration Number is 500 2481 05.

See all our properties at www.connells.co.uk | www.rightmove.co.uk | www.zoopla.co.uk

Property Ref: PBO311457 - 0003