



Connells

Eastfield Road
Peterborough



Property Description

ATTENTION INVESTORS - Situated on Eastfield Road is this fantastic three bedroom, semi detached family home located close by to Lime Academy, NeneGate School and The King's School as well as local amenities and convenient transport links. The home comprises in brief of a lounge, dining room, kitchen and conservatory. Upstairs are three bedrooms, bedroom three access via bedroom two and family bathroom. Outside is a private North/West facing garden with patio area, small front garden and patio area.

Benefiting from a North/West facing rear garden, dining room, lounge, kitchen and conservatory. This three bedroom, semi detached home is located close by to Lime Academy, NeneGate School and The King's School and local amenities and no onward chain.

Lounge

11' 9" x 11' 10" (3.58m x 3.61m)

Measurements include recess - Double glazed window to front, radiator and laminate flooring.

Dining Room

11' 10" x 12' (3.61m x 3.66m)

Measurements include recess Double glazed window to the rear, radiator, understairs cupboard and laminate flooring.

Kitchen

5' 10" x 10' 4" (1.78m x 3.15m)

Single glazed window to side, laminate flooring, radiator, door to side, space for oven.

Conservatory

16' 11" x 4' 4" (5.16m x 1.32m)

Lean to, tiled flooring and door to rear.

First Floor

Bathroom

6' 10" x 5' 6" (2.08m x 1.68m)

Double glazed windows to side and rear, heated towel rail, tiled flooring, bath with shower over, wash hand basin and WC.

Landing

Carpet

Bedroom One

11' 10" x 11' 9" (3.61m x 3.58m)

Measurements include recess - Double glazed window to the front, radiator, wood laminate flooring and cupboard over stairs.

Bedroom Two

11' 9" x 12' 1" (3.58m x 3.68m)

Measurements include recess - Double glazed window to the rear, radiator and wood laminate flooring.

Bedroom Three

5' 11" x 8' 2" (1.80m x 2.49m)

Access through bedroom two, double glazed window to the rearm radiator and wood laminate flooring.

Outside

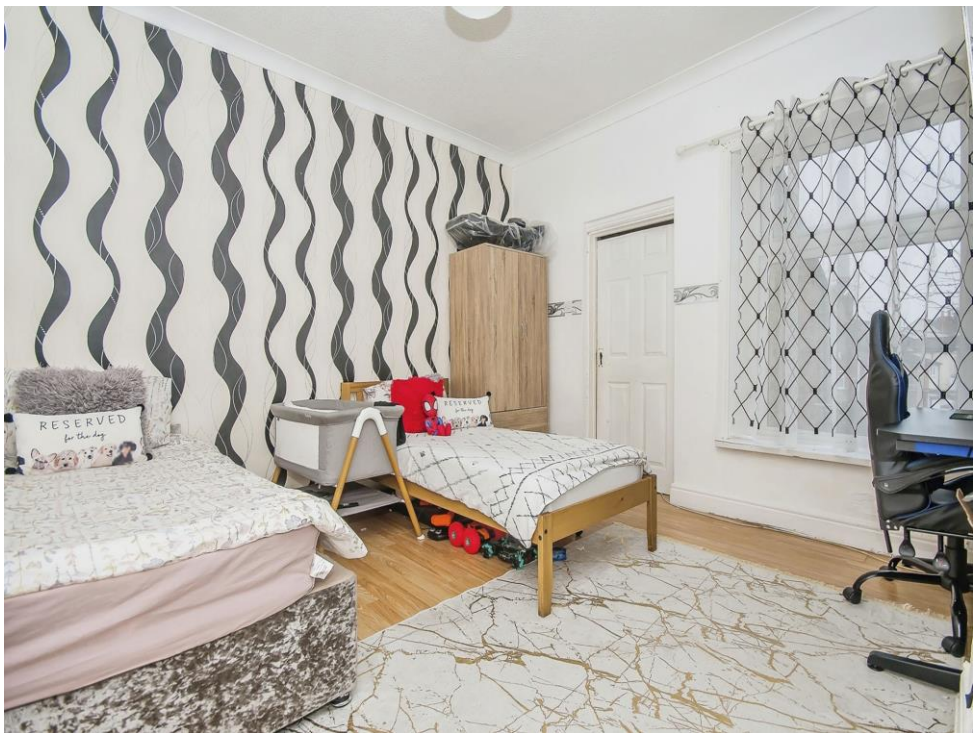
Rear Garden

North/West facing and patio area.

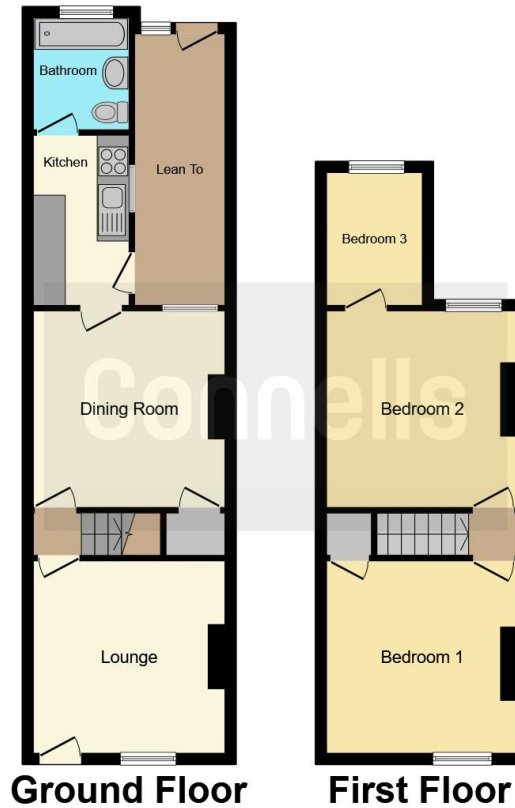
Front Garden

Dwarf brick wall, hedge and borders, small front garden and patio area.









This floorplan is for illustrative purposes only and is not drawn to scale. Measurements, floor-areas, openings and orientations are approximate. They should not be relied upon for any purpose and do not form any part of an agreement. No liability is taken for any error or mis-statement. All parties must rely on their own inspections.

To view this property please contact Connells on

T 01733 314 775
E peterborough@connells.co.uk

14 Cowgate
 PETERBOROUGH PE1 1NA

EPC Rating: E

Tenure: Freehold

view this property online [connells.co.uk/Property/PBO311483](https://www.connells.co.uk/Property/PBO311483)



1. MONEY LAUNDERING REGULATIONS Intending purchasers will be asked to produce identification documentation at a later stage and we would ask for your co-operation in order that there will be no delay in agreeing the sale. 2. These particulars do not constitute part or all of an offer or contract. 3. The measurements indicated are supplied for guidance only and as such must be considered incorrect. Potential buyers are advised to recheck measurements before committing to any expense. 4. We have not tested any apparatus, equipment, fixtures, fittings or services and it is in the buyers interest to check the working condition of any appliances.

Connells Residential is registered in England and Wales under company number 1489613, Registered Office is Cumbria House, 16-20 Hockliffe Street, Leighton Buzzard, Bedfordshire, LU7 1GN. VAT Registration Number is 500 2481 05.

See all our properties at www.connells.co.uk | www.rightmove.co.uk | www.zoopla.co.uk

Property Ref: PBO311483 - 0010