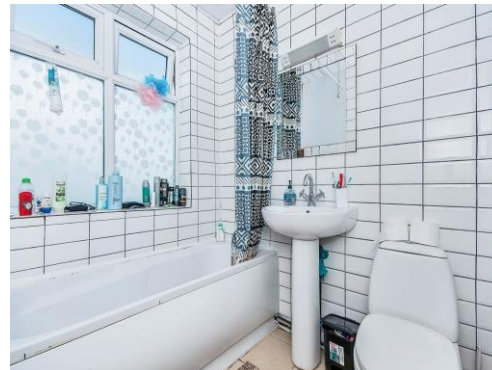




Connells

Vere Road
Peterborough



Property Description

Peterborough is the city at the heart of rural East England, bridging the Cambridgeshire, Rutland, Lincolnshire and Northamptonshire borders. Peterborough and its region have an important place in the history of Britain and the modern city continues to grow in importance and in the right way.

Direct trains run to Kings Cross, the North and Birmingham New Street. The A1/ A1(M) provides direct road access to London and the North, and to the West via the A14 at Huntingdon.

Three bedroom, detached property located on Vere Road - Accommodation comprises of an entrance hall, reception room, lounge, kitchen, three bedrooms on the first floor and the bathroom. Outside is an enclosed rear garden and garage. Planning permission has also been granted for dwelling.

Entrance Hall

Stairs to first floor, storage and door to front.

Lounge One

13' x 11' 4" (3.96m x 3.45m)
UPVC window to front, radiator and coving.

Lounge Two

12' 10" x 11' 10" (3.91m x 3.61m)
UPVC window to rear and radiator.

Kitchen

8' 9" x 13' 1" (2.67m x 3.99m)
UPVC window to side, door to side, tiled flooring, high and low level storage with worktops over, integrated electric oven, gas hob, cooker hood, wall mounted boiler and 1 and 1/2 basin stainless steel sink/drainer with mixer tap.

Cloakroom

7' 2" x 4' 7" (2.18m x 1.40m)
UPVC window to side, wash hand basin, WC, radiator and washing machine plumbing.

Storage / Bedroom

15' 4" x 10' 10" (4.67m x 3.30m)
UPVC double door to rear.

En-Suite

UPVC window to front, WC, wash hand basin, panelled bath and tiled walls.

First Floor

Bedroom One

11' 3" x 12' 11" (3.43m x 3.94m)

UPVC window to front and radiator.

Bedroom Two

11' 5" x 12' 10" (3.48m x 3.91m)

UPVC window to rear and radiator.

Bedroom Three

7' 8" x 7' 6" (2.34m x 2.29m)

UPVC window to rear and radiator.

Bathroom

5' 10" x 6' 3" (1.78m x 1.91m)

UPVC window to front, tiled splashbacks, wash hand basin, bath, WC and tiled flooring.

Outside

Rear Garden

Enclosed by fencing and mainly laid to lawn.

Garage

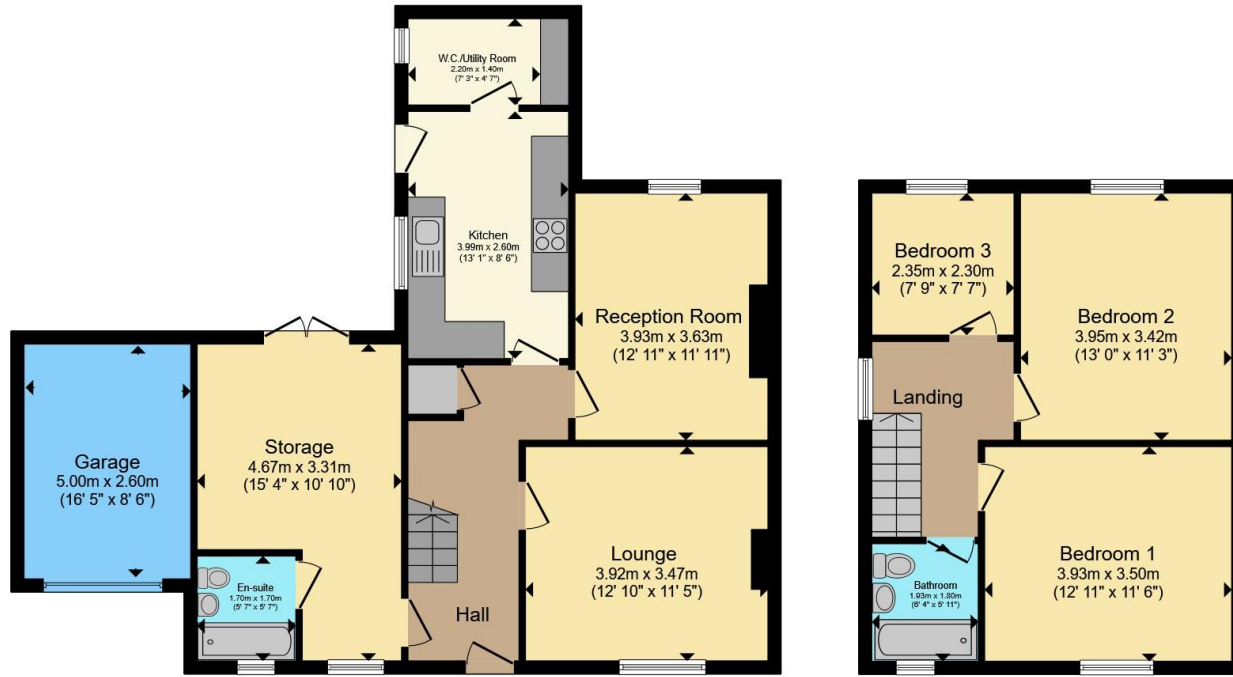
16' 5" x 8' 6" (5.00m x 2.59m)

UP and over door.









Ground Floor

First Floor

Total floor area 123.7 sq.m. (1,337 sq.ft.) approx

This floor plan is for illustrative purposes only. It is not drawn to scale. Any measurements, floor areas (including any total floor area), openings and orientation are approximate. No details are guaranteed, they cannot be relied upon for any purpose and they do not form part of any agreement. No liability is taken for any error, omission or misstatement. A party must rely upon its own inspection(s). Powered by www.focalagent.com

Powered by audioagent.com

To view this property please contact Connells on

T 01733 314 775
E peterborough@connells.co.uk

14 Cowgate
 PETERBOROUGH PE1 1NA

EPC Rating: E

Tenure: Freehold

view this property online connells.co.uk/Property/PBO311259



1. MONEY LAUNDERING REGULATIONS Intending purchasers will be asked to produce identification documentation at a later stage and we would ask for your co-operation in order that there will be no delay in agreeing the sale. 2. These particulars do not constitute part or all of an offer or contract. 3. The measurements indicated are supplied for guidance only and as such must be considered incorrect. Potential buyers are advised to recheck measurements before committing to any expense. 4. We have not tested any apparatus, equipment, fixtures, fittings or services and it is in the buyers interest to check the working condition of any appliances.

Connells Residential is registered in England and Wales under company number 1489613, Registered Office is Cumbria House, 16-20 Hockliffe Street, Leighton Buzzard, Bedfordshire, LU7 1GN. VAT Registration Number is 500 2481 05.

See all our properties at www.connells.co.uk | www.rightmove.co.uk | www.zoopla.co.uk

Property Ref: PBO311259 - 0016