



**Connells**

Woodsage Drive  
Gillingham





### Property Description

This maisonette features a cosy yet functional layout with a well-appointed double bedroom which benefits from a built in wardrobe, a modern bathroom, a kitchen with wall and base units perfect for storage and a spacious living room ideal for entertaining or relaxing.

Its convenient location in Gillingham ensures easy access to nearby amenities such as supermarkets, cafes, schools, dentists and doctors surgeries making it a desirable choice for comfortable living.

### Living Room

16' 3" into 18"05' x 12' 2" ( 4.95m into 18"05' x 3.71m )

The living room has two double glazed windows to the front of the property. It has wooden flooring, a TV point and two radiators.

### Kitchen

7' 9" x 7' 4" ( 2.36m x 2.24m )

The kitchen has a double glazed window to the front of the property. The kitchen has vinyl flooring, a radiator, wall and base units, a one bowl stainless steel sink and drainer, an electric oven with cooker hood. It has space for a fridge freezer and houses the boiler.

### Bedroom 1

11' x 8' 6" ( 3.35m x 2.59m )

The bedroom has a double glazed window to the front of the property. It has carpeted flooring, a radiator and a built in wardrobe.

### Bathroom

The part tiled bathroom has a frosted window to the rear of the property. It has vinyl flooring, a WC, a wash hand basin, a shaver point and medicine cupboard, a radiator and a bath with an overhead shower.

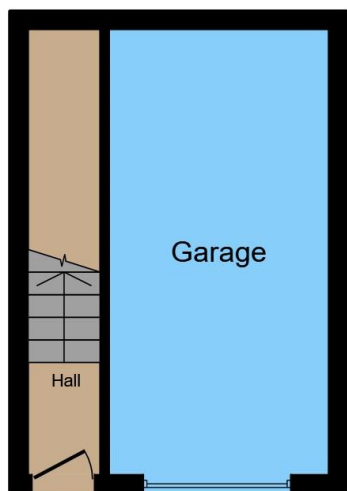
### Parking

The property offers one allocated space which can be accessed by the shared entrance underneath the maisonette. There is also communal parking.

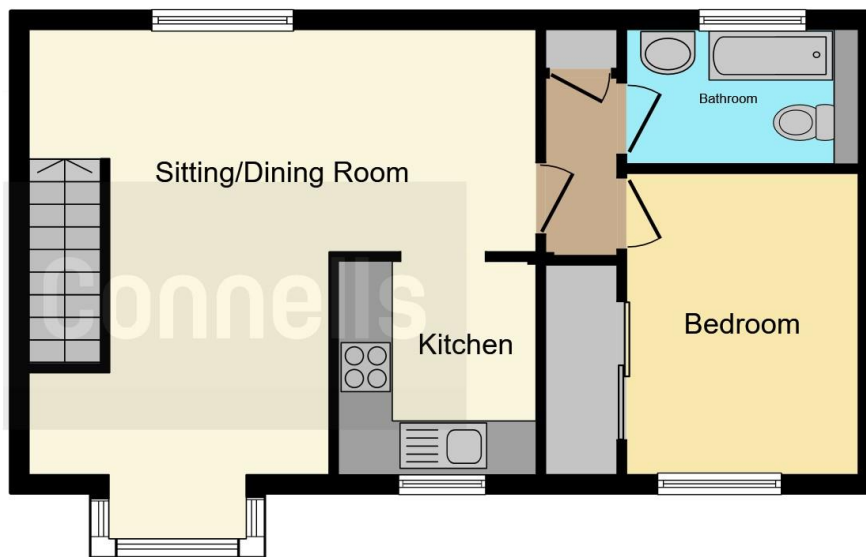








**Ground Floor**



**First Floor**



This floor plan is for illustrative purposes only. It is not drawn to scale. Any measurements, floor areas (including any total floor area), openings and orientation are approximate. No details are guaranteed, they cannot be relied upon for any purpose and they do not form part of any agreement. No liability is taken for any error, omission or misstatement. A party must rely upon its own inspection(s). Powered by [www.focalagent.com](http://www.focalagent.com)

To view this property please contact Connells on

**T 01747 821 791**  
**E [gillingham@connells.co.uk](mailto:gillingham@connells.co.uk)**

4 Clive House High Street  
 GILLINGHAM SP8 4QT

**EPC Rating: C**

**view this property online [connells.co.uk/Property/GIL305660](http://connells.co.uk/Property/GIL305660)**

Tenure: Freehold



1. MONEY LAUNDERING REGULATIONS Intending purchasers will be asked to produce identification documentation at a later stage and we would ask for your co-operation in order that there will be no delay in agreeing the sale. 2. These particulars do not constitute part or all of an offer or contract. 3. The measurements indicated are supplied for guidance only and as such must be considered incorrect. Potential buyers are advised to recheck measurements before committing to any expense. 4. We have not tested any apparatus, equipment, fixtures, fittings or services and it is in the buyers interest to check the working condition of any appliances.

Connells Residential is registered in England and Wales under company number 1489613, Registered Office is Cumbria House, 16-20 Hockliffe Street, Leighton Buzzard, Bedfordshire, LU7 1GN. VAT Registration Number is 500 2481 05.

**See all our properties at [www.connells.co.uk](http://www.connells.co.uk) | [www.rightmove.co.uk](http://www.rightmove.co.uk) | [www.zoopla.co.uk](http://www.zoopla.co.uk)**

Property Ref: GIL305660 - 0011