





Property Description

A charming five-bedroom mid-terraced townhouse on Walpole Street in Weymouth. This well-appointed family home offers a perfect blend of space, comfort, and modern living, all just a short stroll away from Weymouth's award-winning beach.

The inviting lounge features a delightful fireplace, creating a cozy atmosphere for relaxation and family gatherings. The heart of the home is the open-plan kitchen and dining room, designed for both functionality and socialising. This space is perfect for entertaining guests or enjoying everyday meals with family.

The townhouse is thoughtfully arranged over two additional floors, providing ample room for a growing family. You'll find five well-proportioned bedrooms, each offering a comfortable retreat. The master bedroom comes complete with an en-suite bathroom, ensuring privacy and convenience. A family bathroom serves the other bedrooms.

Step outside to the low-maintenance, enclosed rear garden, ideal for enjoying outdoor activities or simply unwinding in a private setting. This space provides a perfect backdrop for family barbecues or peaceful evenings under the stars.

Situated within a short walking distance to Weymouth's famous beach, this property offers the perfect coastal lifestyle. Enjoy leisurely walks along the promenade, engage in water sports, or simply relax on the sandy shores.

This delightful townhouse on Walpole Street is an ideal family home, blending spacious living with a prime location.

Entrance

Glazed composite door leading into:-

Entrance Hallway

Stairs rise to the first floor. Wall mounted radiator, doors leading to:-

Living Room

12' 6" x 11' 9" (3.81m x 3.58m)

Front aspect double-glazed window, feature fireplace, television point, carpeted and wall mounted radiator.

Kitchen / Dining Room

22' 1" x 15' (6.73m x 4.57m)

Fitted kitchen with a range of wall and base units incorporating a stainless steel sink drainer with worksurfaces over, electric hob and electric oven with cooker hood over, wooden style flooring, space and plumbing for washing machine, space for fridge freezer, double glazed window overlooking rear garden and French doors leading to the rear garden.



First Floor

Landing

Stairs from ground floor, doors leading to

Bedroom One

15' 7" x 12' 6" (4.75m x 3.81m)

Two front aspect double glazed windows,
Wall mounted radiator, Door leading to

En Suite

Suite comprising walk in shower cubicle,
wash hand basin and WC. Wall mounted
radiator

Bedroom Two

11' 11" x 9' 9" (3.63m x 2.97m)

Rear aspect double glazed window, and wall
mounted radiator

Bathroom

9' 6" x 8' 4" (2.90m x 2.54m)

Window to side, suite comprising corner walk
in shower cubicle, freestanding bath with
shower attachment, WC, wash hand basin
and wall mounted towel rail.

Second Floor

Landing

Stairs rise from ground floor with doors
leading to:-

Bedroom Three

12' x 9' 11" (3.66m x 3.02m)

Rear aspect double glazed window and wall
mounted radiator.

Bedroom Four

12' 8" x 7' 6" (3.86m x 2.29m)

L Shaped Room, front aspect double glazed
window and wall mounted radiator.

Bedroom Five

9' 4" x 7' 5" (2.84m x 2.26m)

Front aspect double glazed window and wall
mounted radiator.

Outside

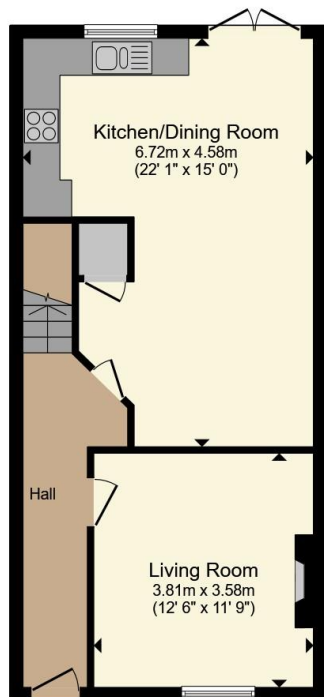
Rear Garden

Fully enclosed rear garden which is laid to
lawn and there is also a patio area for outside
dining and gated pedestrian access to the
rear.

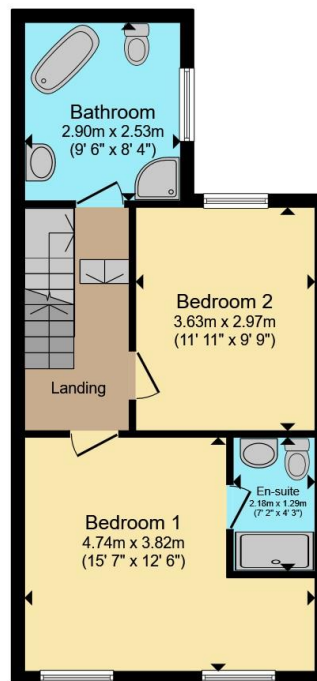




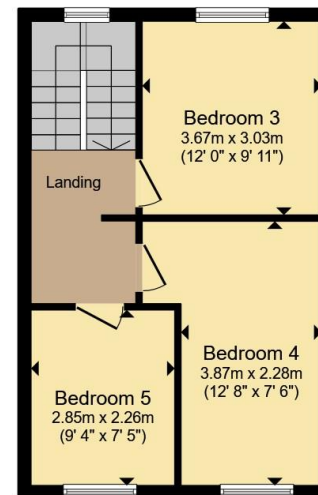




Ground Floor



First Floor



Second Floor

Total floor area 128.1 m² (1,379 sq.ft.) approx

This floor plan is for illustrative purposes only. It is not drawn to scale. Any measurements, floor areas (including any total floor area), openings and orientation are approximate. No details are guaranteed, they cannot be relied upon for any purpose and they do not form part of any agreement. No liability is taken for any error, omission or misstatement. A party must rely upon its own inspection(s). Powered by www.propertybox.io

Connells

To view this property please contact Connells on

T 01305 770 333
E weymouth@connells.co.uk

84 St. Thomas Street
WEYMOUTH DT4 8EN

EPC Rating: C Council Tax
Band: C

Tenure: Freehold

view this property online connells.co.uk/Property/WEY309553



1. MONEY LAUNDERING REGULATIONS Intending purchasers will be asked to produce identification documentation at a later stage and we would ask for your co-operation in order that there will be no delay in agreeing the sale. 2. These particulars do not constitute part or all of an offer or contract. 3. The measurements indicated are supplied for guidance only and as such must be considered incorrect. Potential buyers are advised to recheck measurements before committing to any expense. 4. We have not tested any apparatus, equipment, fixtures, fittings or services and it is in the buyers interest to check the working condition of any appliances.

Connells Residential is registered in England and Wales under company number 1489613, Registered Office is Cumbria House, 16-20 Hockliffe Street, Leighton Buzzard, Bedfordshire, LU7 1GN. VAT Registration Number is 500 2481 05.

See all our properties at www.connells.co.uk | www.rightmove.co.uk | www.zoopla.co.uk

Property Ref: WEY309553 - 0011