



Connells

Sea View
Portland



Property Description

A bay fronted late Victorian home conveniently situated at Fortuneswell within the Conservation Area, close to local shops and within a short walking distance of Chesil Beach.

This bright and airy home benefits from a wealth of character features and enjoys sea views from the front aspect rooms, ideal as a main or second home.

On the ground floor, an entrance hall leads through to an open plan sitting/dining room with exposed floorboards, a fireplace with a wood burner stove and storage cupboards. The delightful kitchen has been renovated, boasting a tiled floor and is fitted with a range of wall and floor cupboards. There is a door to the rear courtyard and access to the utility/store, formally an air raid shelter which also benefits from a WC.

On the first floor are three bedrooms, the main bedroom with a bay window enjoying delightful sea views over Chesil Beach. Bedroom 2 is also a double bedroom, while bedroom 3 has double doors opening onto a fabulous roof terrace. There is a fitted shower room and a spiral staircase leading to a useful attic room with a Velux window from which sea views can be enjoyed.

Outside, to the front of the property is a lovely south-westerly facing terrace providing a lovely spot for sitting out.

Entrance

Porch

Sitting / Dining Room

14' 7" x 24' (4.45m x 7.32m)

Kitchen

14' 7" narrowing to 10' 9" x 10' 9" (4.45m narrowing to 3.28m x 3.28m)

First Floor

Landing

Bedroom One

14' 7" x 10' 6" (4.45m x 3.20m)

Bedroom Two

10' 1" x 8' 8" (3.07m x 2.64m)

Bedroom Three

7' 5" narrowing to 6' 6" x 8' 5" Max (2.26m narrowing to 1.98m x 2.57m)

Shower Room

6' 5" x 4' (1.96m x 1.22m)

Second Floor

Attic Room

14' 7" narrowing to 11' 1" x 10' 4" (4.45m narrowing to 3.38m x 3.15m)

Outside

Outbuilding

8' 6" x 13' 5" max (2.59m x 4.09m max)

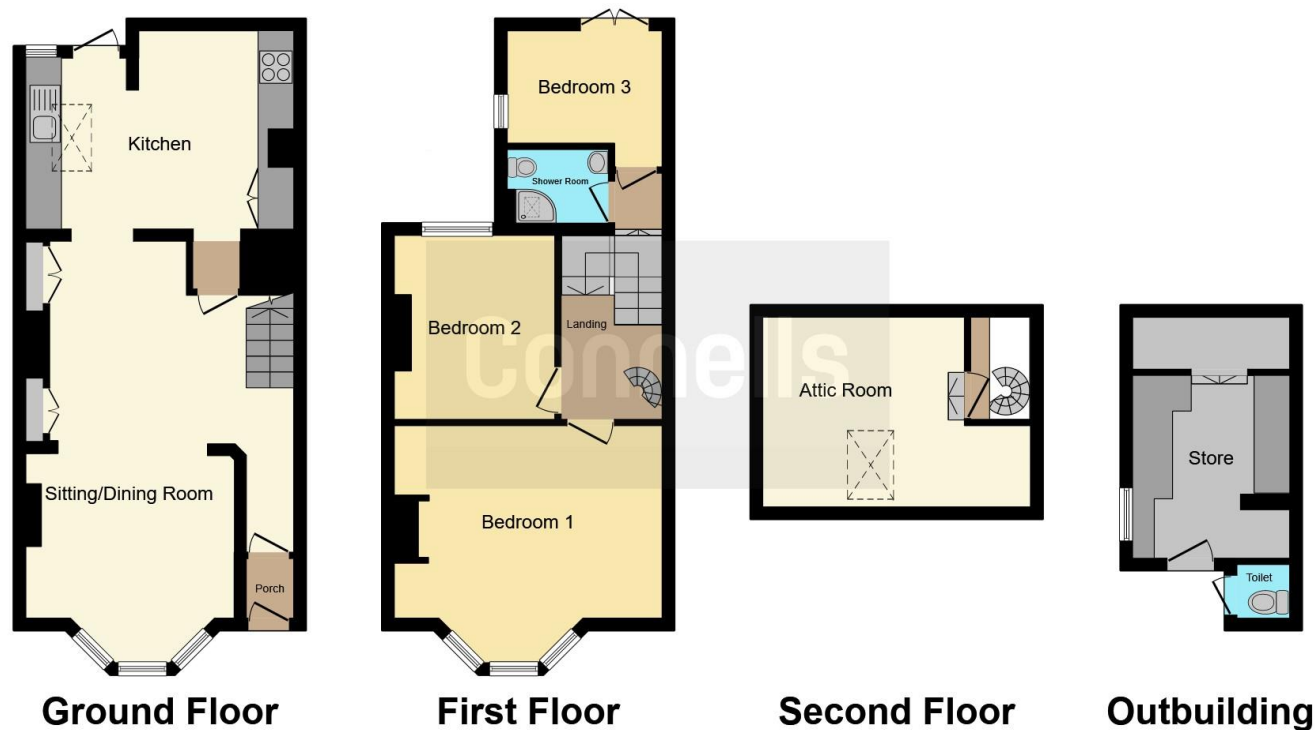
Front Garden

Rear Garden









This floor plan is for illustrative purposes only. It is not drawn to scale. Any measurements, floor areas (including any total floor area), openings and orientation are approximate. No details are guaranteed, they cannot be relied upon for any purpose and they do not form part of any agreement. No liability is taken for any error, omission or misstatement. A party must rely upon its own inspection(s). Powered by www.focalagent.com

To view this property please contact Connells on

T 01305 770 333
E weymouth@connells.co.uk

84 St. Thomas Street
 WEYMOUTH DT4 8EN

EPC Rating: E Council Tax
 Band: B

Tenure: Freehold

view this property online connells.co.uk/Property/WEY309468



1. MONEY LAUNDERING REGULATIONS Intending purchasers will be asked to produce identification documentation at a later stage and we would ask for your co-operation in order that there will be no delay in agreeing the sale. 2. These particulars do not constitute part or all of an offer or contract. 3. The measurements indicated are supplied for guidance only and as such must be considered incorrect. Potential buyers are advised to recheck measurements before committing to any expense. 4. We have not tested any apparatus, equipment, fixtures, fittings or services and it is in the buyers interest to check the working condition of any appliances.

Connells Residential is registered in England and Wales under company number 1489613, Registered Office is Cumbria House, 16-20 Hockliffe Street, Leighton Buzzard, Bedfordshire, LU7 1GN. VAT Registration Number is 500 2481 05.

See all our properties at www.connells.co.uk | www.rightmove.co.uk | www.zoopla.co.uk

Property Ref: WEY309468 - 0009