



Connells

Preston Road
Preston Weymouth



Property Description

Connells Estate Agents are pleased to bring to the market this charming one bedroom, semi detached cottage, which we believe was constructed around 1740. This Grade II listed property offers many character features and as such we strongly recommend viewing.

Accommodation

Ground Floor

Entrance Hall

Entrance via timber door to hall. Tiled floor and jacket hanging rail. Glazed timber door to: -

Lounge

17' 7" x 10' 1" (5.36m x 3.07m)

Front aspect timber framed window. Stairs to first floor. Two wall mounted radiators. Fireplace with stone hearth. Built in storage cupboard. Television and telephone point.

Kitchen

12' 9" x 7' 9" (3.89m x 2.36m)

Fitted kitchen with a range of wall and base units incorporating a Belfast sink with timber worksurfaces over. Cupboard housing combi boiler. Space and plumbing for washing machine. Space for slimline dishwasher. Laminate flooring. Rear aspect timber framed double glazed window. Wall mounted radiator.



First Floor

Bedroom One

19' 1" x 11' 5" max (5.82m x 3.48m max)

Front and rear aspect timber framed windows. Wall mounted radiator. Built in wardrobe. Hatch to loft. Television point. Door to: -

Bathroom

Suite comprising panel enclosed bath with mixer tap and shower over, low level WC and vanity hand wash basin. Extractor fan. Wall mounted heated towel rail. Tiled floor and part tiled walls.

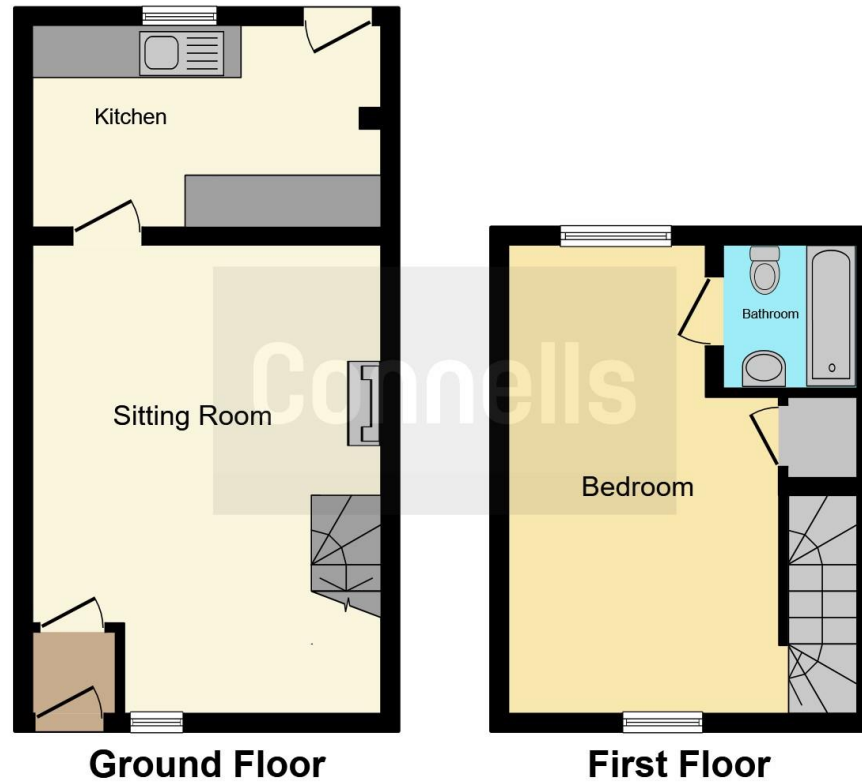
Outside

Access to the rear garden is via a door in the kitchen leading to a small patio area. A few steps lead up to the rear garden. Beautifully presented with a number of laud paving stones used from the original sitting room floor. A large area laid to lawn is complimented various shrubs and bushes with erected fences either side of the boundary. A truly pleasant garden.









This floor plan is for illustrative purposes only. It is not drawn to scale. Any measurements, floor areas (including any total floor area), openings and orientation are approximate. No details are guaranteed, they cannot be relied upon for any purpose and they do not form part of any agreement. No liability is taken for any error, omission or misstatement. A party must rely upon its own inspection(s). Powered by www.focalagent.com

To view this property please contact Connells on

T 01305 770 333
E weymouth@connells.co.uk

84 St. Thomas Street
 WEYMOUTH DT4 8EN

EPC Rating: D Council Tax
 Band: C

Tenure: Freehold

view this property online connells.co.uk/Property/WEY309105



1. MONEY LAUNDERING REGULATIONS Intending purchasers will be asked to produce identification documentation at a later stage and we would ask for your co-operation in order that there will be no delay in agreeing the sale. 2. These particulars do not constitute part or all of an offer or contract. 3. The measurements indicated are supplied for guidance only and as such must be considered incorrect. Potential buyers are advised to recheck measurements before committing to any expense. 4. We have not tested any apparatus, equipment, fixtures, fittings or services and it is in the buyers interest to check the working condition of any appliances.

Connells Residential is registered in England and Wales under company number 1489613, Registered Office is Cumbria House, 16-20 Hockliffe Street, Leighton Buzzard, Bedfordshire, LU7 1GN. VAT Registration Number is 500 2481 05.

See all our properties at www.connells.co.uk | www.rightmove.co.uk | www.zoopla.co.uk

Property Ref: WEY309105 - 0003