



Connells

Mitchell Street
Weymouth



Property Description

This beautifully presented Georgian property offers spacious and versatile accommodation over three floors. The property has versatile configuration, one of which is to be used as two apartments.

On the ground floor flat there is a spacious living room, two bedrooms, shower room, separate wc and kitchen/breakfast room with access to the it's private courtyard,

The first floor welcomes a stunning master bedroom suite including dressing area & en suite, two further bay fronted bedrooms, spacious bathroom, separate wc and direct access to the roof terrace.

On the second floor there are a substantial living area with vaulted ceilings, dining area, kitchen and utility area.

Living Room

17' 9" x 11' 6" (5.41m x 3.51m)

Window to rear, parquet flooring, and panel radiator.

Kitchen

15' x 7' 6" (4.57m x 2.29m)

Window and door to side, range of fitted base and wall units, one and a quarter bowl stainless steel sink unit, tiled splashbacks, gas cooker point, space for fridge freezer, plumbing for washing machine, and panel radiator.

Bedroom One

12' 9" x 10' 9" (3.89m x 3.28m)

Window to front, parquet flooring, and panel radiator.

Bedroom Two

11' 6" x 9' 9" (3.51m x 2.97m)

Window to rear, panel radiator, and built in wardrobes.

Wc

Bathroom

Window to front, panel bath, walk in shower cubicle, low level WC, panel radiator, and tiled splash backs.

Entrance

Entrance Hall

Doors to the ground floor apartment and the upper maisonette, tiled flooring, meter and storage cupboard.

Ground Floor Flat

Entrance Hall

Panel radiator, parquet flooring, and storeroom.



First Floor

Maisonette Entrance Hall

Under stairs storage, parquet flooring, panel radiator, stairs to first floor landing.

Bedroom Three

14' 9" x 9' 6" (4.50m x 2.90m)

Window to front, panel radiator, range of built in wardrobes.

Bedroom Two

11' 9" x 11' 6" (3.58m x 3.51m)

Window to front, panel radiator, fitted wardrobes and storage cupboards.

Master Bedroom Suite

Dressing Room

10' 6" x 9' 6" (3.20m x 2.90m)

Excellent range of built in wardrobes, panel radiator, opening onto:

Bedroom

17' 9" x 12' 3" (5.41m x 3.73m)

Double aspect room, two panel radiators, and range of fitted wardrobes.

En Suite

Window to rear, panel bath with mixer taps and hand shower attachment, pedestal wash hand basin, low level WC, panel radiator, and fully tiled walls.

Bathroom

Window to front, panel bath, shower unit, pedestal wash hand basin, low level WC, panel radiator, and tiled splash backs.

Wc

Window and door to rear, low level WC, wash hand basin.

Second Floor

Living Space

31' 9" x 25' 6" (9.68m x 7.77m)

Maximum measurement, offering a very large and attractive vaulted exposed beamed ceiling with a feature arched window to the front, there are two other smaller arched windows and a Velux to the side. There are steps up to a spacious galleried dining area with storage alcoves, four panel radiators, and a door into:

Kitchen

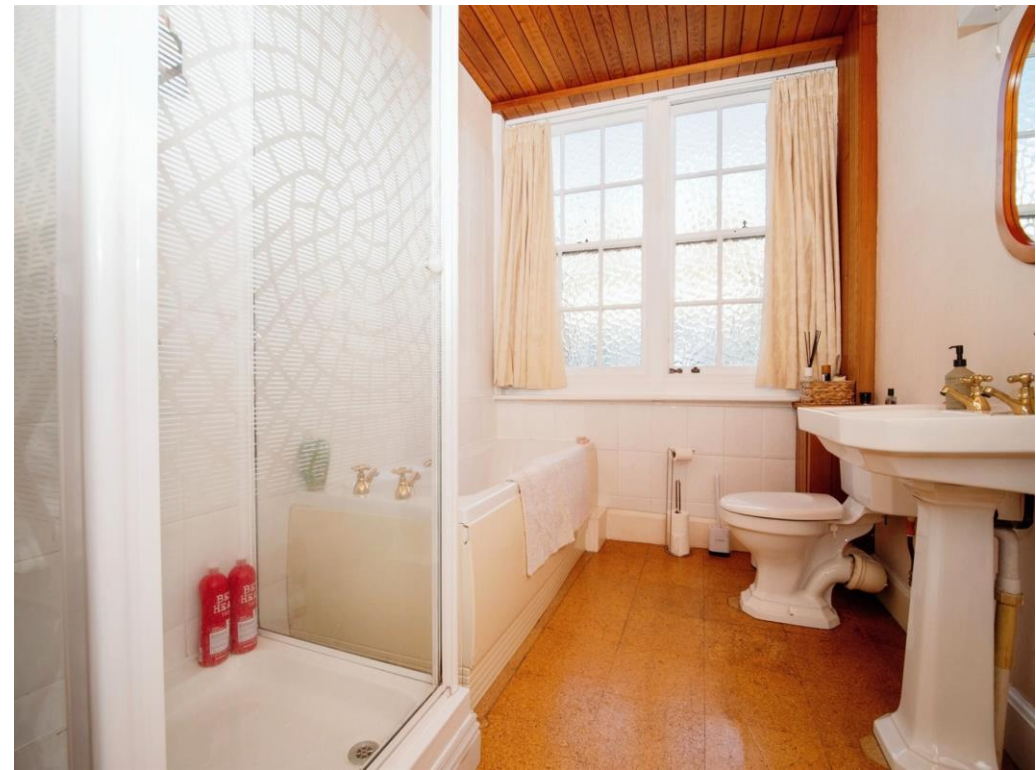
14' 3" x 7' 10" (4.34m x 2.39m)

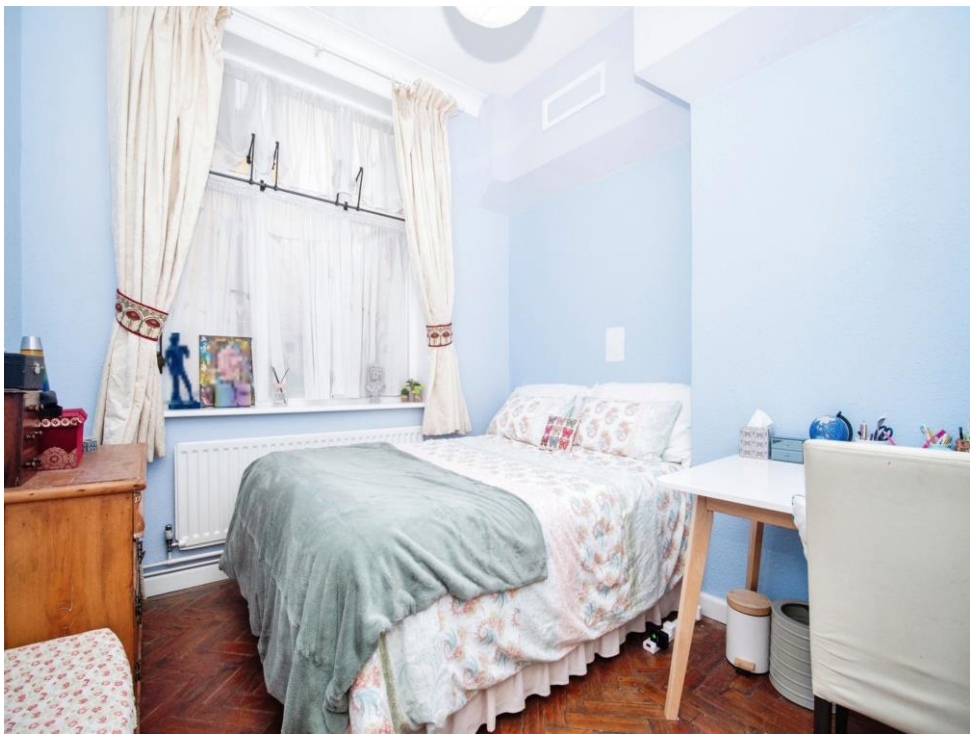
Window to rear, range of base and wall units, cooker point with extractor above, tiled splash backs, double bowl stainless steel sink unit with mixer taps, space for fridge freezer, door to large alcove with space for up right freezer and plumbing for washing machine and dryer.

Outside

The ground floor has an enclosed private courtyard garden mainly laid to a paved patio with raised flower bed.

The upper maisonette has its own private roof garden enclosed with railing.









This floorplan is for illustrative purposes only and is not drawn to scale. Measurements, floor-areas, openings and orientations are approximate. They should not be relied upon for any purpose and do not form any part of an agreement. No liability is taken for any error or mis-statement. All parties must rely on their own inspections.

To view this property please contact Connells on

T 01305 770 333
E weymouth@connells.co.uk

84 St. Thomas Street
 WEYMOUTH DT4 8EN

EPC Rating: Awaiting

Tenure: Freehold

view this property online connells.co.uk/Property/WEY308297



1. MONEY LAUNDERING REGULATIONS Intending purchasers will be asked to produce identification documentation at a later stage and we would ask for your co-operation in order that there will be no delay in agreeing the sale. 2. These particulars do not constitute part or all of an offer or contract. 3. The measurements indicated are supplied for guidance only and as such must be considered incorrect. Potential buyers are advised to recheck measurements before committing to any expense. 4. We have not tested any apparatus, equipment, fixtures, fittings or services and it is in the buyers interest to check the working condition of any appliances.

Connells Residential is registered in England and Wales under company number 1489613, Registered Office is Cumbria House, 16-20 Hockliffe Street, Leighton Buzzard, Bedfordshire, LU7 1GN. VAT Registration Number is 500 2481 05.

See all our properties at www.connells.co.uk | www.rightmove.co.uk | www.zoopla.co.uk

Property Ref: WEY308297 - 0002