



**Connells**

Seaforth Spa Road  
Weymouth



**\*\* SHOW HOUSE NOW OPEN, CALL US FOR A VIEWING \*\***

Seaforth is designed with you in mind. Seaforth offers a fresh, minimal design against a subtle colour pallet and well-placed accents.

#### Space reimagined

Seaforth offers spacious three-and four-bedroom homes, as well as an apartment scheme, with landscaped gardens, parking, secure bicycle storage, as well as being less than two-miles from Weymouth's charming coastline and Weymouth Bay.

Homes that offer a space for working, which is more important than ever. Your main reception rooms will offer open-plan living which make family life and entertaining a total breeze. Your kitchen / dining area boasts elegant shaker doors and feature splash backs. Every bathroom follows a luxury scheme.

#### Brief Kitchen Overview

- " Dusk blue shaker kitchen with light grey oak carcass and chrome handles
  - " 1.5 bowl sink and chrome mixer tap
  - " Lamona black induction hob and multi-function oven
  - " Lamona integrated dishwasher and 70/30 fridge-freezer
  - " Separate utility room\* (house types A & D only)
  - " Warm white LED tape light to underside of wall units
- #### Brief Bathroom Overview
- " Light oak wall hung vanity unit with chrome mixer tap
  - " Contemporary pan (floor standing)
  - " Chrome shower rail with wall mounted mixer
  - " Steel bath
  - " Full width mirror to bathroom recess



## Dimensions

Utility - 6.3 x 5.5

Study - 11.5 x 10.1 into bay

Kitchen / diner- 22.6 x 11.4

Lounge -11.4 x 16.7

Master bedroom - 11,7 x 12.2

Dressing room - 5.7 x 4,3

Bedroom 2 - 14.2 x 14.1

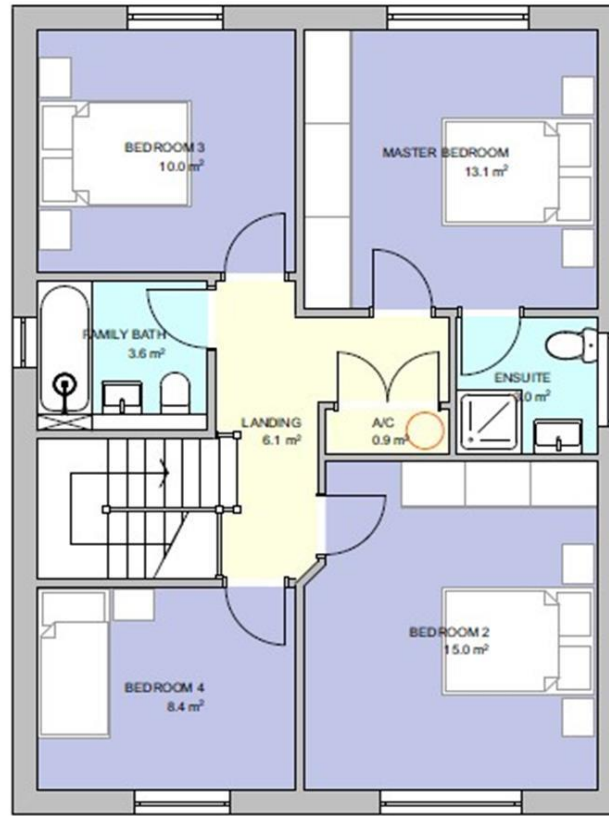
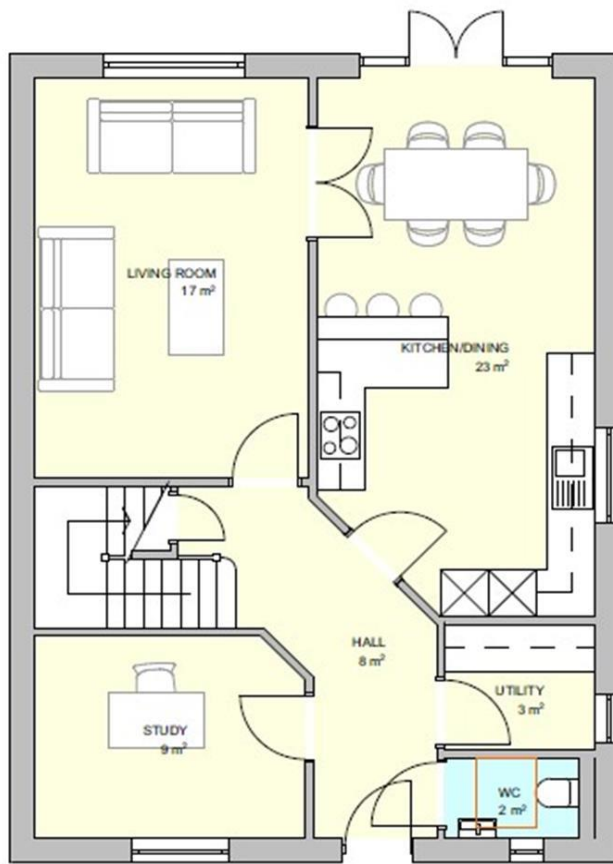
Bedroom 3 - 10,3 x 10.7

Bedroom 4 - 10.8 x 8.5

## Please Note

Please note that images used may be computer generated and/or from a show-home by the developer and are meant for guidance only. Images are general of the development and may not relate to your chosen Plot - clarification should be sought from our sales team.





1 GA PLANS GF 1:50 2 01-First Floor 1:50

To view this property please contact Connells on

**T 01305 770 333**  
**E weymouth@connells.co.uk**

84 St. Thomas Street  
 WEYMOUTH DT4 8EN

**EPC Rating: Exempt**

**view this property online [connells.co.uk/Property/WEY307899](http://connells.co.uk/Property/WEY307899)**

Tenure: Freehold



1. MONEY LAUNDERING REGULATIONS Intending purchasers will be asked to produce identification documentation at a later stage and we would ask for your co-operation in order that there will be no delay in agreeing the sale. 2. These particulars do not constitute part or all of an offer or contract. 3. The measurements indicated are supplied for guidance only and as such must be considered incorrect. Potential buyers are advised to recheck measurements before committing to any expense. 4. We have not tested any apparatus, equipment, fixtures, fittings or services and it is in the buyers interest to check the working condition of any appliances.

Connells Residential is registered in England and Wales under company number 1489613, Registered Office is Cumbria House, 16-20 Hockliffe Street, Leighton Buzzard, Bedfordshire, LU7 1GN. VAT Registration Number is 500 2481 05.

**See all our properties at [www.connells.co.uk](http://www.connells.co.uk) | [www.rightmove.co.uk](http://www.rightmove.co.uk) | [www.zoopla.co.uk](http://www.zoopla.co.uk)**

Property Ref: WEY307899 - 0004