



Lucian Close Coventry CV2 2DP

for sale offers over
£180,000



Property Description

A mid terrace property situated in the ever popular and convenient area of Walsgrave, Coventry, being close to University Hospital, great transport links and local amenities. Briefly comprises: ground floor lounge and fitted kitchen/diner. Upstairs there are three bedrooms and a fitted shower room. Outside there is a rear garden.

Porch

Front door and window to side elevation.

Lounge

17' 3" max x 9' 11" (5.26m max x 3.02m)
Double glazed window to the front elevation, radiator and television point.

Fitted Kitchen/Diner

17' 2" x 6' 10" (5.23m x 2.08m)
Wall and base mounted units incorporating an inset single drainer sink unit with work surfaces. Integrated electric oven and electric hob with cookerhood over, plumbing for automatic washing machine, space for domestic appliance, double glazed window to the rear elevation and double glazed patio doors leading to the rear garden.

First Floor Landing

Doors to:

Bedroom One

9' 9" plus recess x 9' (2.97m plus recess x 2.74m)
Double glazed window to the front elevation and radiator.

Bedroom Two

10' 11" x 7' 10" (3.33m x 2.39m)
Double glazed window to the rear elevation and radiator.

Bedroom Three

7' x 5' 10" (2.13m x 1.78m)
Double glazed window to the front elevation and radiator.

Fitted Shower Room

Tiled, comprising shower cubicle, wash hand basin, toilet, radiator and double glazed window to the rear elevation.

Outside

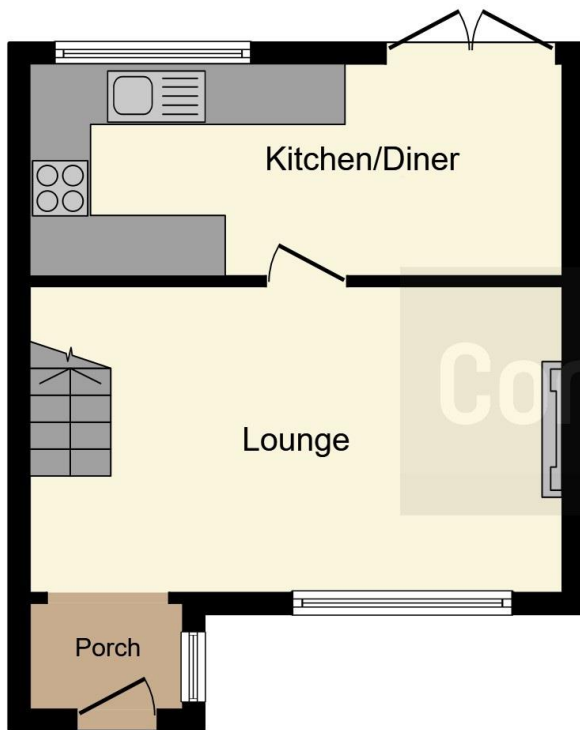
Front Garden

Lawned with access to front door.

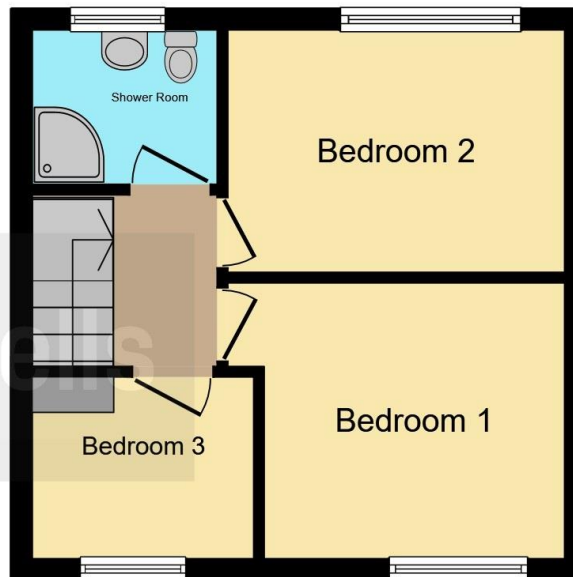
Rear Garden

Patio area beyond being laid to lawn.





Ground Floor



First Floor

This floor plan is for illustrative purposes only. It is not drawn to scale. Any measurements, floor areas (including any total floor area), openings and orientation are approximate. No details are guaranteed, they cannot be relied upon for any purpose and they do not form part of any agreement. No liability is taken for any error, omission or misstatement. A party must rely upon its own inspection(s). Powered by www.focalagent.com

To view this property please contact Connells on

T 02476 553 093
E coventry@connells.co.uk

38 New Union Street
 COVENTRY CV1 2HN

EPC Rating: C Council Tax
 Band: B

view this property online connells.co.uk/Property/COV321822



Tenure: Freehold



1. MONEY LAUNDERING REGULATIONS Intending purchasers will be asked to produce identification documentation at a later stage and we would ask for your co-operation in order that there will be no delay in agreeing the sale. 2. These particulars do not constitute part or all of an offer or contract. 3. The measurements indicated are supplied for guidance only and as such must be considered incorrect. Potential buyers are advised to recheck measurements before committing to any expense. 4. We have not tested any apparatus, equipment, fixtures, fittings or services and it is in the buyers interest to check the working condition of any appliances.

Connells Residential is registered in England and Wales under company number 1489613, Registered Office is Cumbria House, 16-20 Hockliffe Street, Leighton Buzzard, Bedfordshire, LU7 1GN. VAT Registration Number is 500 2481 05.

See all our properties at www.connells.co.uk | www.rightmove.co.uk | www.zoopla.co.uk

Property Ref: COV321822 - 0006