



Not for marketing purposes INTERNAL USE ONLY

Grangemouth Road
Radford Coventry



Property Description

****NO UPWARD CHAIN**** This mid terrace family home property in this popular area north of the city, being close to local amenities, petrol station and transport links. The accommodation briefly comprises; ground floor lounge and a 'L' shaped fitted kitchen. To the first floor there are three bedrooms and a fitted shower room. Externally there are front & rear gardens.

Approach

Upvc front door.

Entrance Hall

Stairs rising to first floor, radiator.

Lounge

10' 4" into bay x 9' 11" (3.15m into bay x 3.02m)

Double glazed window to the front elevation, radiator, television point and feature fireplace with electric fire.

Fitted Kitchen

14' 10" max x 10' 5" (4.52m max x 3.17m)

'L' shaped kitchen comprising of wall and base mounted units incorporating an inset single drainer sink unit with work surfaces. Cooker point, plumbing for automatic washing machine, space for domestic appliance, radiator, double glazed window to the rear elevation and door leading to the rear garden.

First Floor Landing

Doors to;

Bedroom One

10' 5" x 9' 11" (3.17m x 3.02m)

Double glazed window to the rear elevation and radiator.

Bedroom Two

Double glazed window to the front elevation and radiator.

Bedroom Three

7' 4" x 6' 5" (2.24m x 1.96m)

Double glazed window to the rear elevation and radiator.

Fitted Shower Room

Tiled, comprising walk-in shower cubicle, wash hand basin, toilet, heated towel rail and double glazed window to the rear elevation.

Outside

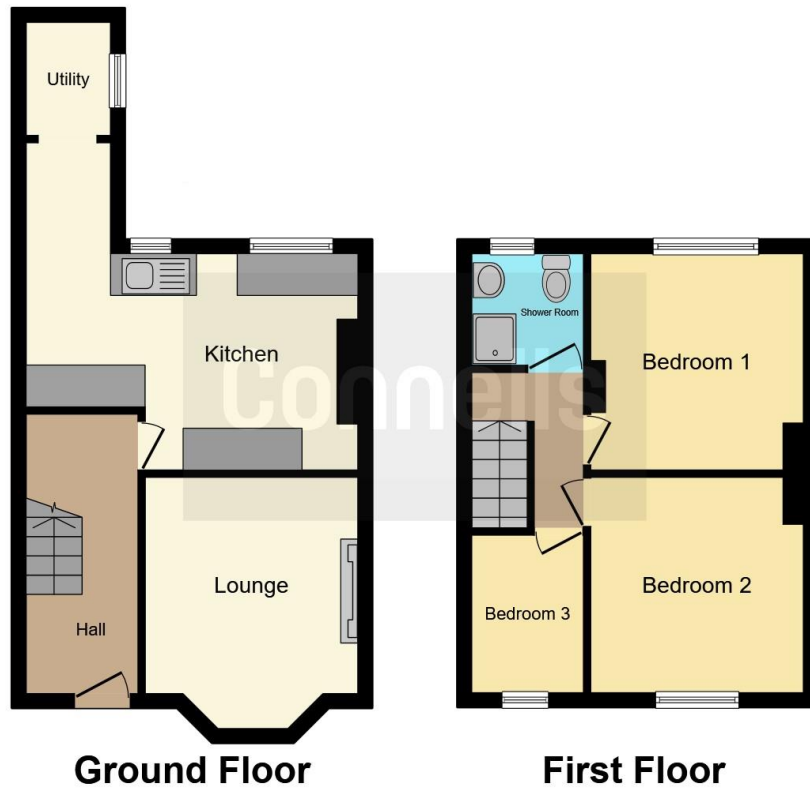
Front Of Property

Gated access to front garden being laid to lawn with access to front door.

Rear Garden

Lawned with outside coal shed.





This floor plan is for illustrative purposes only. It is not drawn to scale. Any measurements, floor areas (including any total floor area), openings and orientation are approximate. No details are guaranteed, they cannot be relied upon for any purpose and they do not form part of any agreement. No liability is taken for any error, omission or misstatement. A party must rely upon its own inspection(s). Powered by www.focalagent.com

To view this property please contact Connells on

T 02476 553 093
E coventry@connells.co.uk

38 New Union Street
 COVENTRY CV1 2HN

EPC Rating: D

[check out more properties at connells.co.uk](http://www.connells.co.uk)

Tenure: Freehold



1. MONEY LAUNDERING REGULATIONS Intending purchasers will be asked to produce identification documentation at a later stage and we would ask for your co-operation in order that there will be no delay in agreeing the sale. 2. These particulars do not constitute part or all of an offer or contract. 3. The measurements indicated are supplied for guidance only and as such must be considered incorrect. Potential buyers are advised to recheck measurements before committing to any expense. 4. We have not tested any apparatus, equipment, fixtures, fittings or services and it is in the buyers interest to check the working condition of any appliances.

Connells Residential is registered in England and Wales under company number 1489613, Registered Office is Cumbria House, 16-20 Hockliffe Street, Leighton Buzzard, Bedfordshire, LU7 1GN. VAT Registration Number is 500 2481 05.

See all our properties at www.connells.co.uk | www.rightmove.co.uk | www.zoopla.co.uk

Property Ref: COV321188 - 0006