



**Connells**

Shakespeare Street  
Stoke Coventry





### Property Description

This renovated end of terrace property is located in the Stoke area of Coventry and would be an ideal first time buy. The accommodation briefly comprises: ground floor fitted bathroom, lounge, dining room and a fitted kitchen. To the first floor there are two good sized bedrooms. Externally there is a garden to the front and a rear garden with a summerhouse.

### Porch

Double glazed door and tiled flooring.

### Entrance Hall

Laminate flooring and radiator.

### Lounge

12' 3" x 7' max ( 3.73m x 2.13m max )  
Double glazed window to the front elevation, radiator, television point, laminate flooring and feature fireplace with gas fire.

### Dining Room

12' 2" x 11' 7" ( 3.71m x 3.53m )  
Double glazed window to the rear elevation, radiator and laminate flooring.

### Fitted Kitchen

9' 5" x 6' 3" ( 2.87m x 1.91m )  
Wall and base mounted units incorporating an inset single drainer stainless steel sink unit with work surfaces. Cooker point with extractor hood, plumbing for automatic washing machine, space for domestic appliance, radiator, double glazed window to the rear elevation.

### Ground Floor Bathroom

Tiled, comprising bath with shower over, wash hand basin, toilet, radiator and double glazed window to the rear elevation.

### First Floor Landing

Doors to;

### Bedroom One

12' 3" x 11' 8" ( 3.73m x 3.56m )  
Double glazed window to the rear elevation, laminate flooring and radiator.

### Bedroom Two

12' 2" x 11' 7" ( 3.71m x 3.53m )  
Double glazed window to the front elevation, laminate flooring and radiator.

### Outside

### Front Of Property

Lawned with access to front door.

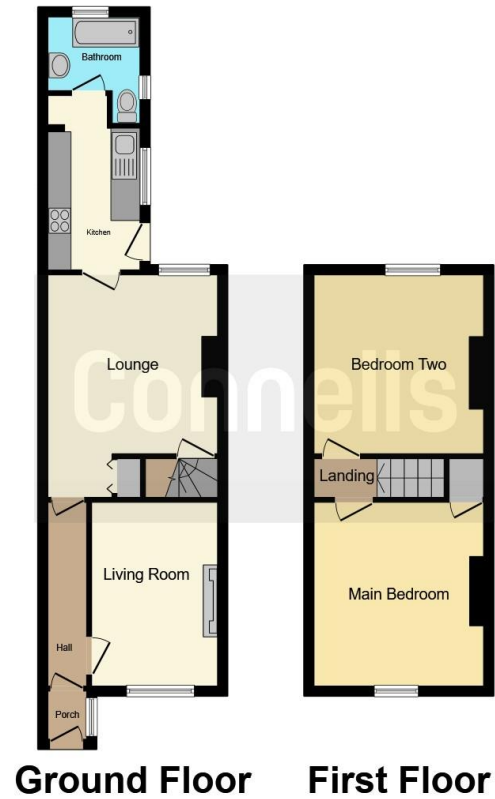
### Rear Garden

Lawned

### Summerhouse

13' 6" x 9' 4" ( 4.11m x 2.84m )  
Double glazed with tiled flooring.





This floor plan is for illustrative purposes only. It is not drawn to scale. Any measurements, floor areas (including any total floor area), openings and orientation are approximate. No details are guaranteed, they cannot be relied upon for any purpose and they do not form part of any agreement. No liability is taken for any error, omission or misstatement. A party must rely upon its own inspection(s). Powered by [www.focalagent.com](http://www.focalagent.com)

To view this property please contact Connells on

**T 02476 553 093**  
**E [coventry@connells.co.uk](mailto:coventry@connells.co.uk)**

38 New Union Street  
 COVENTRY CV1 2HN

**EPC Rating: E**

**view this property online [connells.co.uk/Property/COV321011](http://connells.co.uk/Property/COV321011)**



Tenure: Freehold



1. MONEY LAUNDERING REGULATIONS Intending purchasers will be asked to produce identification documentation at a later stage and we would ask for your co-operation in order that there will be no delay in agreeing the sale. 2. These particulars do not constitute part or all of an offer or contract. 3. The measurements indicated are supplied for guidance only and as such must be considered incorrect. Potential buyers are advised to recheck measurements before committing to any expense. 4. We have not tested any apparatus, equipment, fixtures, fittings or services and it is in the buyers interest to check the working condition of any appliances.

Connells Residential is registered in England and Wales under company number 1489613, Registered Office is Cumbria House, 16-20 Hockliffe Street, Leighton Buzzard, Bedfordshire, LU7 1GN. VAT Registration Number is 500 2481 05.

**See all our properties at [www.connells.co.uk](http://www.connells.co.uk) | [www.rightmove.co.uk](http://www.rightmove.co.uk) | [www.zoopla.co.uk](http://www.zoopla.co.uk)**

Property Ref: COV321011 - 0005