



**Connells**

Uplands  
Stoke Heath Coventry





## Property Description

Great family home located in the popular residential area of Stoke, within easy reach of the local shops and amenities. The accommodation features on the ground floor: entrance hall, lounge, fitted kitchen/diner. Upstairs there are two double bedrooms and a large family bathroom. The third bedroom in the loft. Externally there is a small enclosed garden to the front and a garden to the rear.

### Approach

Front door.

### Entrance Hall

Stairs rising to first floor, radiator.

### Lounge

14' 1" x 12' (4.29m x 3.66m)

Double glazed window to the front elevation, radiator, television point and electric fire.

### Fitted Kitchen/diner

17' 5" x 7' 6" (5.31m x 2.29m)

Base mounted units incorporating an inset single drainer stainless steel sink unit with work surfaces and tiled splashbacks over. Electric cooker point, plumbing for washing machine, space for domestic appliance, radiator, space for table and chairs, 3 double glazed windows to the rear elevation and double glazed door leading to the rear garden.

### First Floor Landing

Doors to:

#### Bedroom One

10' 6" x 9' 2" (3.20m x 2.79m)

Double glazed window to the rear elevation and radiator.

#### Bedroom Two

10' 3" x 8' 10" (3.12m x 2.69m)

Double glazed window to the front elevation and radiator.

### Fitted Bathroom

Tiled, comprising corner bath, separate shower cubicle, wash hand basin, toilet, radiator and double glazed window to the rear elevation.

### Second Floor

#### Bedroom Three

9' 10" x 10' 9" (3.00m x 3.28m)

Double glazed velux windows to the front and rear elevations.

## Outside

### Front Garden

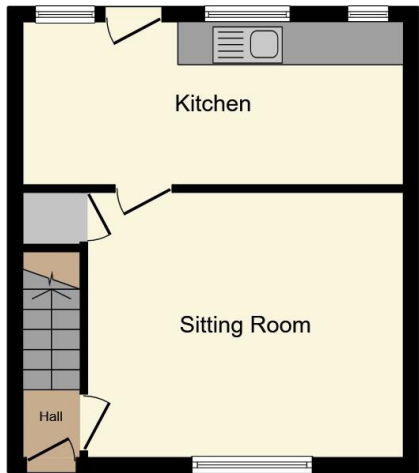
Small foregarden with access to front door.

### Rear Garden

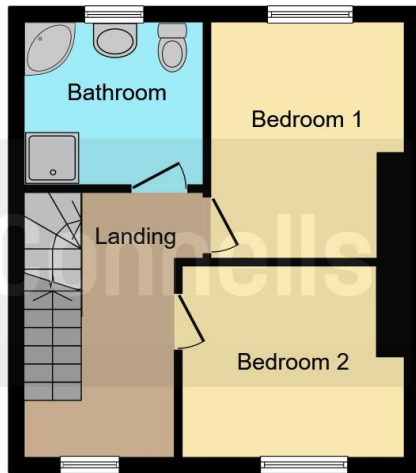
Larger than average garden with decked patio area beyond being laid to lawn.



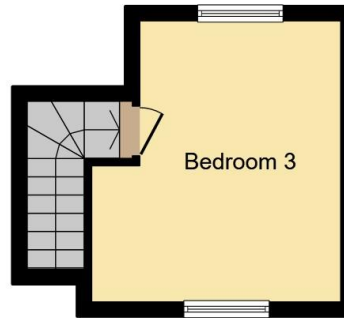




**Ground Floor**



**First Floor**



**Second Floor**



This floorplan is for illustrative purposes only and is not drawn to scale. Measurements, floor-areas, openings and orientations are approximate. They should not be relied upon for any purpose and do not form any part of an agreement. No liability is taken for any error or mis-statement. All parties must rely on their own inspections.

To view this property please contact Connells on

**T 02476 553 093**  
**E [coventry@connells.co.uk](mailto:coventry@connells.co.uk)**

38 New Union Street  
COVENTRY CV1 2HN

**EPC Rating: D**

**view this property online [connells.co.uk/Property/COV320050](http://connells.co.uk/Property/COV320050)**

Tenure: Freehold



1. MONEY LAUNDERING REGULATIONS Intending purchasers will be asked to produce identification documentation at a later stage and we would ask for your co-operation in order that there will be no delay in agreeing the sale. 2. These particulars do not constitute part or all of an offer or contract. 3. The measurements indicated are supplied for guidance only and as such must be considered incorrect. Potential buyers are advised to recheck measurements before committing to any expense. 4. We have not tested any apparatus, equipment, fixtures, fittings or services and it is in the buyers interest to check the working condition of any appliances.

Connells Residential is registered in England and Wales under company number 1489613, Registered Office is Cumbria House, 16-20 Hockliffe Street, Leighton Buzzard, Bedfordshire, LU7 1GN. VAT Registration Number is 500 2481 05.

**See all our properties at [www.connells.co.uk](http://www.connells.co.uk) | [www.rightmove.co.uk](http://www.rightmove.co.uk) | [www.zoopla.co.uk](http://www.zoopla.co.uk)**

Property Ref: COV320050 - 0007