



**Connells**

Hazelbury Shillingstone Fields  
Okeford Fitzpaine Blandford Forum



# Hazelbury Shillingstone Fields Okeford Fitzpaine Blandford Forum DT11 0FL

for sale  
**£350,000**



## Property Description

Nestled in the heart of Shillingstone Fields, a bespoke collection of three- and four-bedroom homes, Plot 19 - The Hazelbury is an elegant open-plan family home offering a perfect balance of modern luxury and rural charm. Overlooking the scenic development and rolling Dorset hills, this beautifully designed property provides contemporary comfort, energy-efficient features, and high-end finishes throughout.

Upon entering, a welcoming entrance hallway provides ample storage for coats, shoes, and household essentials, along with a stylish ground-floor WC.

At the heart of the home is the open-plan kitchen and dining area, offering generous space for cooking and entertaining. Thoughtfully designed, it accommodates a dining table, making it ideal for social gatherings and family meals. The stylish kitchen design caters for all your needs with high-end integrated appliances.

The separate living room boasts elegant Aluminium bifold doors leading to the beautifully landscaped, westerly facing garden, seamlessly blending indoor and outdoor living.

Upstairs, the first floor features three spacious double bedrooms. The master suite is a true retreat, complete with a modern en-suite, built-in designer wardrobes, and serene garden views. The stylish family bathroom is finished with feature wall tiling, a bath with shower over, a hand basin, WC, and a side window for natural light. Additional storage on the landing is perfect for laundry and household essentials.



## Room Measurements

Kitchen/Dining Room: 15'11" x 10'6"

Living Room: 18'3" x 12'3"

Bedroom 1: 13'4" x 10'1"

Bedroom 2: 12'1" x 9'1"

Bedroom 3: 8'10" x 8'0"

## Please Note

Please note that images used may be computer generated and/or from a show-home by the developer and are meant for guidance only. Images are general of the development and may not relate to your chosen Plot - clarification should be sought from our sales team.



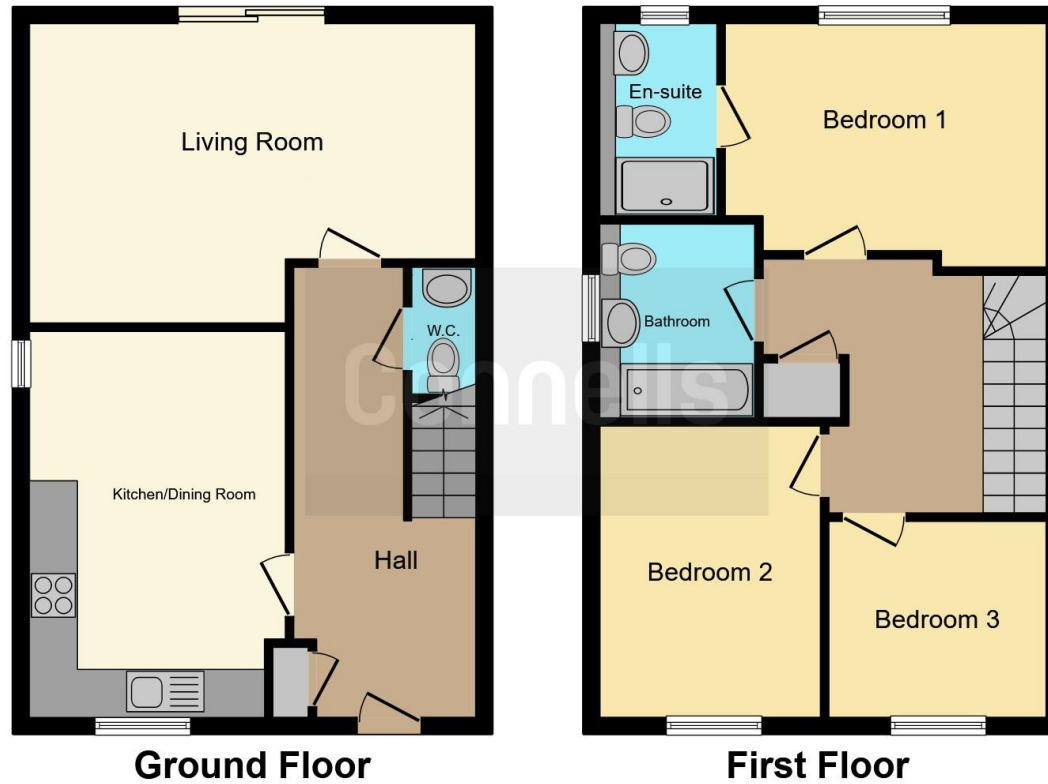












This floor plan is for illustrative purposes only. It is not drawn to scale. Any measurements, floor areas (including any total floor area), openings and orientation are approximate. No details are guaranteed, they cannot be relied upon for any purpose and they do not form part of any agreement. No liability is taken for any error, omission or misstatement. A party must rely upon its own inspection(s). Powered by [www.focalagent.com](http://www.focalagent.com)

To view this property please contact Connells on

**T 01258 452 327**  
**E [blandfordforum@connells.co.uk](mailto:blandfordforum@connells.co.uk)**

20 Salisbury Street  
 BLANDFORD FORUM DT11 7AR

**EPC Rating: Exempt**

Tenure: Freehold

**view this property online** [connells.co.uk/Property/BLF306334](http://connells.co.uk/Property/BLF306334)



1. MONEY LAUNDERING REGULATIONS Intending purchasers will be asked to produce identification documentation at a later stage and we would ask for your co-operation in order that there will be no delay in agreeing the sale. 2. These particulars do not constitute part or all of an offer or contract. 3. The measurements indicated are supplied for guidance only and as such must be considered incorrect. Potential buyers are advised to recheck measurements before committing to any expense. 4. We have not tested any apparatus, equipment, fixtures, fittings or services and it is in the buyers interest to check the working condition of any appliances.

Connells Residential is registered in England and Wales under company number 1489613, Registered Office is Cumbria House, 16-20 Hockliffe Street, Leighton Buzzard, Bedfordshire, LU7 1GN. VAT Registration Number is 500 2481 05.

**See all our properties at [www.connells.co.uk](http://www.connells.co.uk) | [www.rightmove.co.uk](http://www.rightmove.co.uk) | [www.zoopla.co.uk](http://www.zoopla.co.uk)**

Property Ref: BLF306334 - 0005