

for sale

£375,000



Anvil Road Pimperne Blandford Forum DT11 8UQ

In the heart of the Dorset village of Pimperne with a thriving primary school, a well attended church and the popular Anvil Inn, sits this traditional brick and flint built cottage. The house has been bought up to modern standards by the present owners, whilst managing to maintain its period charm.

Anvil Road Pimperne Blandford Forum DT11 8UQ

Lounge

15' 3" x 13' (4.65m x 3.96m)

Carpet flooring with window to the front of the property and radiator below. Electric fire place

14' 9" x 12' (4.50m x 3.66m)

Carpet flooring with window to front and side aspect. double doors opening to the garden.

Kitchen

12' 4" x 9' 4" (3.76m x 2.84m)

Tiled flooring, a range of wall and base units and and stainless steel sink with drainer. 4 ring electric hob and double eye level oven. space for white goods.

Bathroom

Tiled flooring with walk in shower Low level W/C and hand basin.

Bedroom One

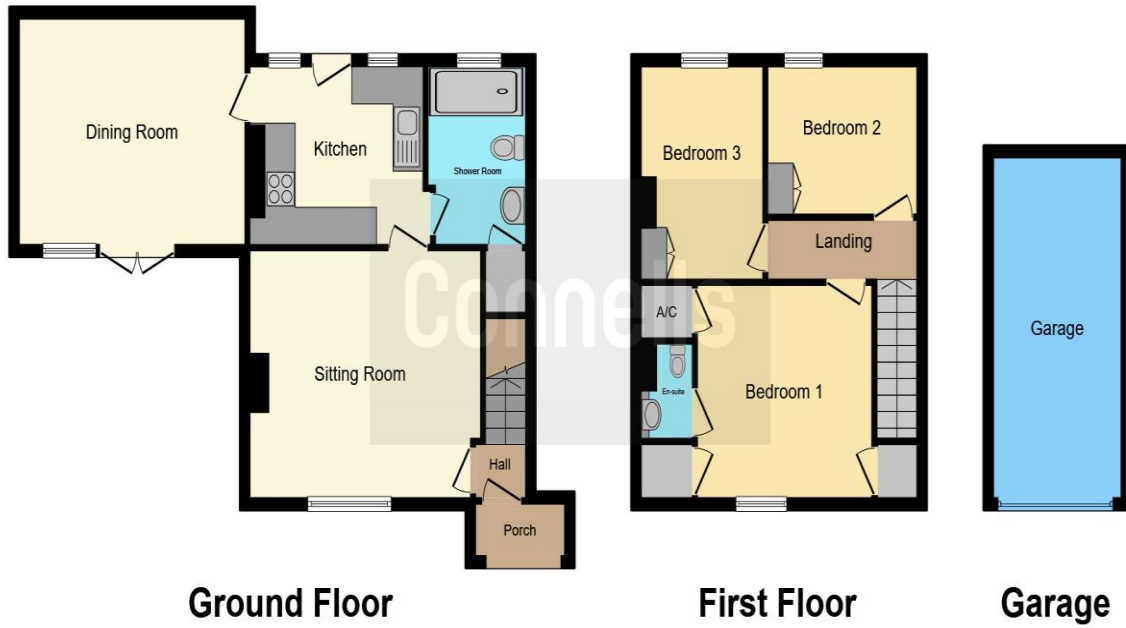
11' 5" x 11' 2" (3.48m x 3.40m)

Carpet flooring, window to the front aspect of the property. built in wardrobe.

Dining Room







This floor plan is for illustrative purposes only. It is not drawn to scale. Any measurements, floor areas (including any total floor area), openings and orientation are approximate. No details are guaranteed, they cannot be relied upon for any purpose and they do not form part of any agreement. No liability is taken for any error, omission or misstatement. A party must rely upon its own inspection(s). Powered by www.focalagent.com

To view this property please contact Connells on

T 01258 452 327
E blandfordforum@connells.co.uk

20 Salisbury Street
 BLANDFORD FORUM DT11 7AR

Property Ref: BLF305496 - 0002

Tenure: Freehold

EPC Rating: D

view this property online connells.co.uk/Property/BLF305496



1. MONEY LAUNDERING REGULATIONS Intending purchasers will be asked to produce identification documentation at a later stage and we would ask for your co-operation in order that there will be no delay in agreeing the sale. 2. These particulars do not constitute part or all of an offer or contract. 3. The measurements indicated are supplied for guidance only and as such must be considered incorrect. Potential buyers are advised to recheck measurements before committing to any expense. 4. We have not tested any apparatus, equipment, fixtures, fittings or services and it is in the buyers interest to check the working condition of any appliances.

Connells Residential is registered in England and Wales under company number 1489613, Registered Office is Cumbria House, 16-20 Hockliffe Street, Leighton Buzzard, Bedfordshire, LU7 1GN. VAT Registration Number is 500 2481 05.

see all our properties at www.connells.co.uk | www.rightmove.co.uk | www.zoopla.co.uk