



**Connells**

Orchard Street  
Blandford Forum





## Property Description

A most interesting 4 bedroom Grade II listed town house. This fine example of a mid-19th century Georgian home has accommodation laid out over 4 floors ensuring there is plenty of space to enjoy for a family. The property is situated near the centre of historical Georgian market town Blandford Forum. Blandford Forum is surrounded by open countryside and has a wide range of shops, amenities, café's, public houses and restaurants. The start of the Trailway is only 100 yards away and is ideal for dog walking, running and cycling etc.

There is excellent schooling in the area within both the private and state sectors to include Bryanston School and The Blandford School. Primary education can be found at Pimperne Primary, the Milldown and Archbishop Wake Primary School.

## Lounge

12' 7" x 10' 7" ( 3.84m x 3.23m )

Carpeted with front aspect double glazed window, feature fireplace

## Kitchen

15' 9" x 11' 3" ( 4.80m x 3.44m )

Range of wall and base units with solid worktop and part tiled walls, stainless steel sink with drainer and mixer tap, space for oven, washing machine and fridge freezer and exposed beams.

## Bedroom 1

12' 7" x 10' 8" ( 3.84m x 3.25m )

Carpeted with front aspect double glazed window, storage cupboard and walk in cupboard.

## Bedroom 2

13' 5" x 8' 7" ( 4.09m x 2.62m )

Carpeted with rear aspect double glazed window, built in cupboard and radiator.

## Bedroom 3

13' 4" x 13' 9" ( 4.06m x 4.19m )

Carpeted with front aspect double glazed window, storage cupboard and fireplace.

## Bedroom 4

15' 6" x 13' 5" ( 4.72m x 4.09m )

Carpeted with dormer window, storage cupboard and radiator.

## Bathroom

Carpeted with rear aspect window, low level WC, hand wash basin with mixer tap, panel bath with tap and storage cupboard.



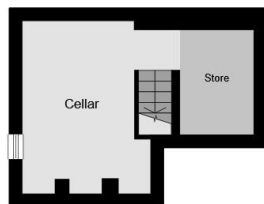




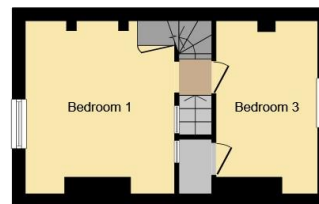




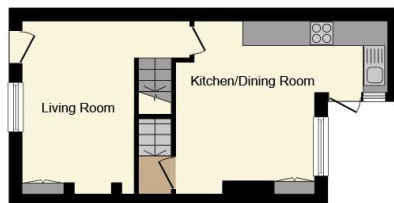




**Cellar**



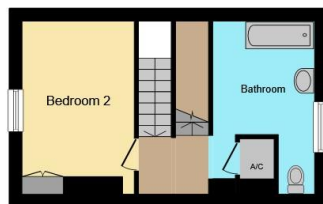
**Second Floor**



**Ground Floor**



**Third Floor**



**First Floor**

This floorplan is for illustrative purposes only and is not drawn to scale. Measurements, floor-areas, openings and orientations are approximate. They should not be relied upon for any purpose and do not form any part of an agreement. No liability is taken for any error or mis-statement. All parties must rely on their own inspections.

To view this property please contact Connells on

**T 01258 452 327**

**E blandfordforum@connells.co.uk**

20 Salisbury Street  
BLANDFORD FORUM DT11 7AR

**EPC Rating: Exempt**

Tenure: Freehold

**view this property online [connells.co.uk/Property/BLF305998](http://connells.co.uk/Property/BLF305998)**



1. MONEY LAUNDERING REGULATIONS Intending purchasers will be asked to produce identification documentation at a later stage and we would ask for your co-operation in order that there will be no delay in agreeing the sale. 2. These particulars do not constitute part or all of an offer or contract. 3. The measurements indicated are supplied for guidance only and as such must be considered incorrect. Potential buyers are advised to recheck measurements before committing to any expense. 4. We have not tested any apparatus, equipment, fixtures, fittings or services and it is in the buyers interest to check the working condition of any appliances.

Connells Residential is registered in England and Wales under company number 1489613, Registered Office is Cumbria House, 16-20 Hockliffe Street, Leighton Buzzard, Bedfordshire, LU7 1GN. VAT Registration Number is 500 2481 05.

**See all our properties at [www.connells.co.uk](http://www.connells.co.uk) | [www.rightmove.co.uk](http://www.rightmove.co.uk) | [www.zoopla.co.uk](http://www.zoopla.co.uk)**

Property Ref: BLF305998 - 0005