

for sale

£850,000



Liscombe Street Poundbury Dorchester DT1 3DF

A five bedroom detached family house with substantial accommodation spread over three floors. Three separate reception rooms are available and this house also features a good size rear garden, double garage with room over and views towards Dorchester.



Liscombe Street Poundbury Dorchester DT1 3DF

Entrance Lobby

Entrance Hall

Cloakroom

Dining Room

14' 7" x 12' 1" (4.45m x 3.68m)

Study

12' 1" x 7' 5" (3.68m x 2.26m)

Kitchen / Dining Room

22' 9" x 12' 1" (6.93m x 3.68m)

Utility Area

First Floor Landing

Living Room

22' 9" x 12' 1" (6.93m x 3.68m)

Master Bedroom

16' 4" x 12' 1" (4.98m x 3.68m)

Dressing Area

En-Suite Shower Room



Second Floor Landing

Bedroom 2

12' 1" x 12' 1" (3.68m x 3.68m)

En-Suite Shower Room

Bedroom 3

12' 7" x 12' 1" (3.84m x 3.68m)

Bedroom 4

12' 1" x 8' 2" (3.68m x 2.49m)

Bedroom 5

9' 5" x 8' 5" (2.87m x 2.57m)

Bathroom

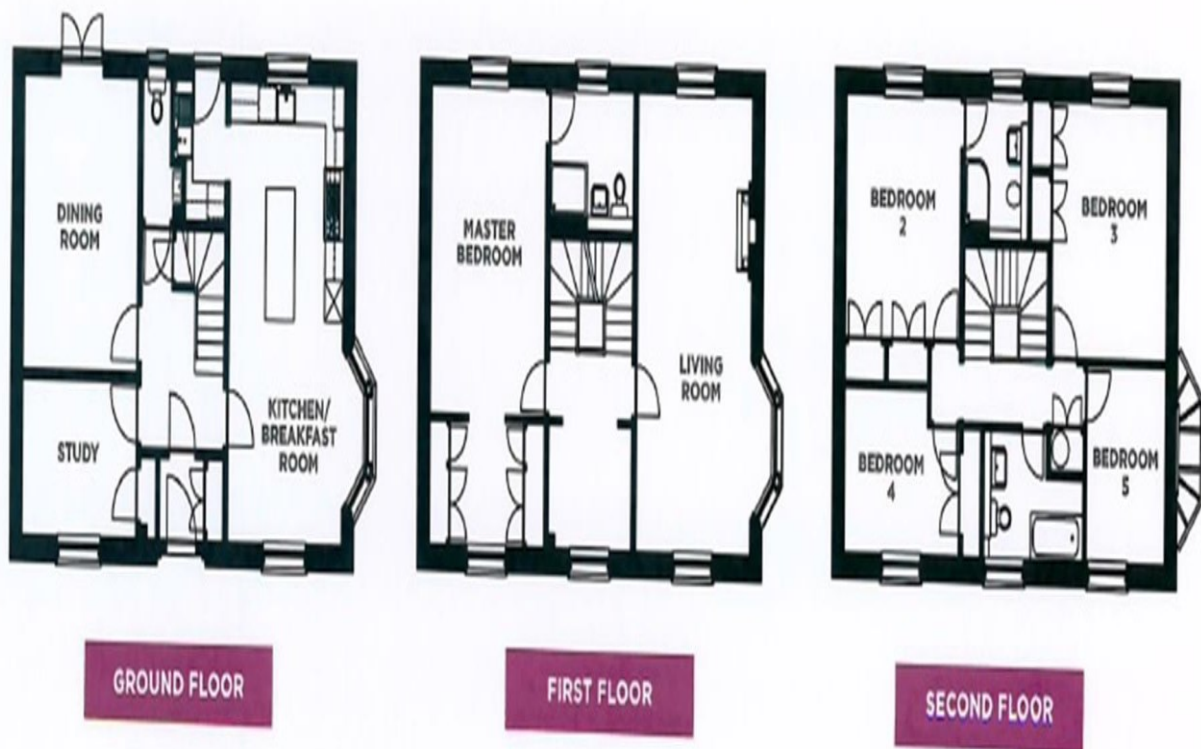
Outside

Double Garage

Room Over Garage

Garden





To view this property please contact Connells on

T 01305 266 755
E Dorchester@connells.co.uk

3 High West Street
 DORCHESTER DT1 1UH

Property Ref: DCH304885 - 0005

Tenure: Freehold

EPC Rating: Exempt

view this property online [connells.co.uk/Property/ref-DCH304885](https://www.connells.co.uk/Property/ref-DCH304885)



1. MONEY LAUNDERING REGULATIONS Intending purchasers will be asked to produce identification documentation at a later stage and we would ask for your co-operation in order that there will be no delay in agreeing the sale. 2. These particulars do not constitute part or all of an offer or contract. 3. The measurements indicated are supplied for guidance only and as such must be considered incorrect. Potential buyers are advised to recheck measurements before committing to any expense. 4. We have not tested any apparatus, equipment, fixtures, fittings or services and it is in the buyers interest to check the working condition of any appliances.

see all our properties at www.connells.co.uk | www.rightmove.co.uk | www.zoopla.co.uk