



Connells

Stanstead Road
Maiden Newton DORCHESTER



Property Description

Situated in the village of Maiden Newton which benefits from a wide range of amenities including fuel station, shops, primary school, train station, public house and church. This three bedroom family home comprises of a kitchen, dining room and generous lounge opening to rear garden on the ground floor. The first floor boasts three spacious bedrooms and family bathroom. There is also driveway parking to the front.

Ground Floor

Entrance Porch

Double glazed door to the front, a double glazed door to the side aspect and a single glazed door to the kitchen.

Kitchen

9' 9" x 8' 5" (2.97m x 2.57m)

Door leading from the entrance porch to the fitted kitchen with a range of base and wall units. a sink and drainer, an electric oven and hob with a cookerhood over, plumbing for a washing machine, a double glazed window to the front aspect and a door to the dining room.

Dining Room

15' 10" x 7' 7" (4.83m x 2.31m)

Door leading from the kitchen, with a double glazed door to the front aspect, an electric storage radiator, a television aerial socket and a pair of doors leading to the lounge.

Lounge

16' 6" x 13' 4" (5.03m x 4.06m)

Double doors leading from the dining room, a double glazed window to the rear aspect, an electric storage heater, a television aerial socket, a telephone point, a double glazed door leading to the rear garden, an understairs cupboard and stairs leading to the first floor.



First Floor

First Floor Landing

Stairs leading up from the lounge, with an airing cupboard, access to the loft and doors to the bathroom and three bedrooms.

Bedroom 1

12' 6" x 9' 6" (3.81m x 2.90m)

Door leading from the landing, with an electric storage radiator and a double glazed window to the rear aspect.

Bedroom 2

9' 5" x 10' 7" (2.87m x 3.23m)

Door leading from the landing, with an electric storage radiator and a double glazed window to the rear.

Bedroom 3

7' 7" x 6' 9" (2.31m x 2.06m)

Door leading from the landing, an electric storage radiator and a double glazed window to the rear aspect.

Bathroom

Door leading from the landing to the part tiled family bathroom, with a double glazed window to the front aspect, a WC, a wash hand basin and a bath with a shower over.

Outside

Front Garden

Laid to a lawn, with a patio and off street parking on the drive for two cars.

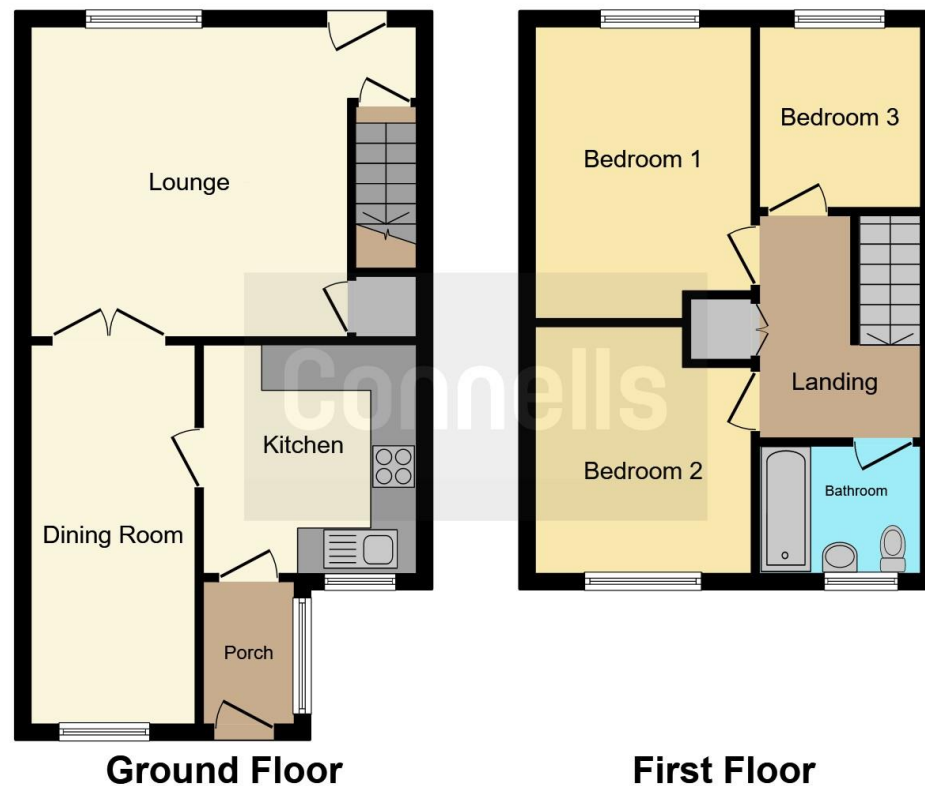
Rear Garden

Door leading from the lounge and laid to a lawn and patio with a rear gate.









This floor plan is for illustrative purposes only. It is not drawn to scale. Any measurements, floor areas (including any total floor area), openings and orientation are approximate. No details are guaranteed, they cannot be relied upon for any purpose and they do not form part of any agreement. No liability is taken for any error, omission or misstatement. A party must rely upon its own inspection(s). Powered by www.focalagent.com

To view this property please contact Connells on

T 01305 266 755
E Dorchester@connells.co.uk

3 High West Street
 DORCHESTER DT1 1UH

EPC Rating: D

Tenure: Freehold

check out more properties at connells.co.uk



1. MONEY LAUNDERING REGULATIONS Intending purchasers will be asked to produce identification documentation at a later stage and we would ask for your co-operation in order that there will be no delay in agreeing the sale. 2. These particulars do not constitute part or all of an offer or contract. 3. The measurements indicated are supplied for guidance only and as such must be considered incorrect. Potential buyers are advised to recheck measurements before committing to any expense. 4. We have not tested any apparatus, equipment, fixtures, fittings or services and it is in the buyers interest to check the working condition of any appliances.

Connells Residential is registered in England and Wales under company number 1489613, Registered Office is Cumbria House, 16-20 Hockliffe Street, Leighton Buzzard, Bedfordshire, LU7 1GN. VAT Registration Number is 500 2481 05.

See all our properties at www.connells.co.uk | www.rightmove.co.uk | www.zoopla.co.uk

Property Ref: DCH308664 - 0009