



Connells

Signature House Maumbury Gardens
Dorchester



Property Description

Situated at Signature house within the award winning Brewery Square Development is this fantastic one bedroom apartment exclusive to the over 55's. Comprising of light and airy lounge-diner, modern kitchen, generous double bedroom and stunning shower room. The development benefits greatly from a range of communal facilities including; gardens, roof terrace with far-reaching views across the town, laundry room, communal lounge and library.

Ground Floor

Communal Entrance

Communal entrance with an intercom and a lift and stairs to all floors. Benefiting from access to a laundry room, a communal lounge and a library.

Fourth Floor

Entrance Hall

Door leading from the communal hallway with an intercom, an electric radiator, the consumer cupboard and doors leading to the kitchen, the lounge, the bedroom and the shower room.

Kitchen

9' 6" x 6' 5" (2.90m x 1.96m)

Door leading from the hallway to a fitted kitchen comprising of a range of wall and base units, a sink and drainer, an electric oven and hob with a cookerhood over, an integral washing machine, an integral fridge/freezer and a doorway leading to the lounge.

Lounge

12' 8" x 10' 7" (3.86m x 3.23m)

A door leading from the hallway and a doorway leading from the kitchen, with a double glazed window to the front aspect, an intercom, a television aerial socket and a telephone point.

Bedroom 1

10' 11" x 10' 4" (3.33m x 3.15m)

A door leading from the hallway, with a double glazed window to the front aspect and an airing cupboard.

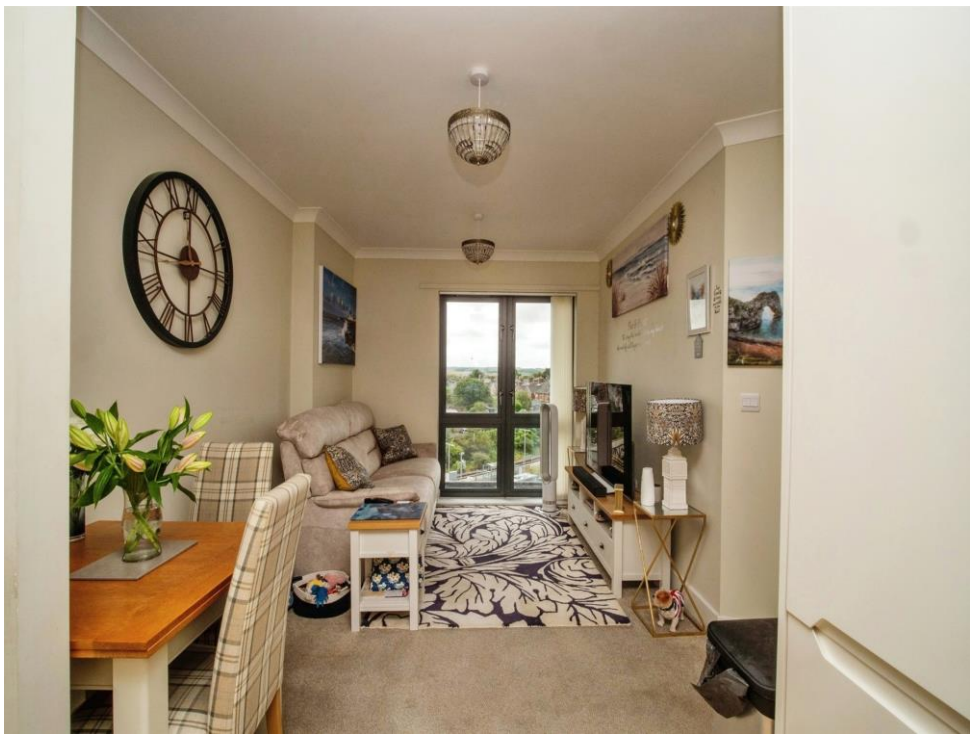
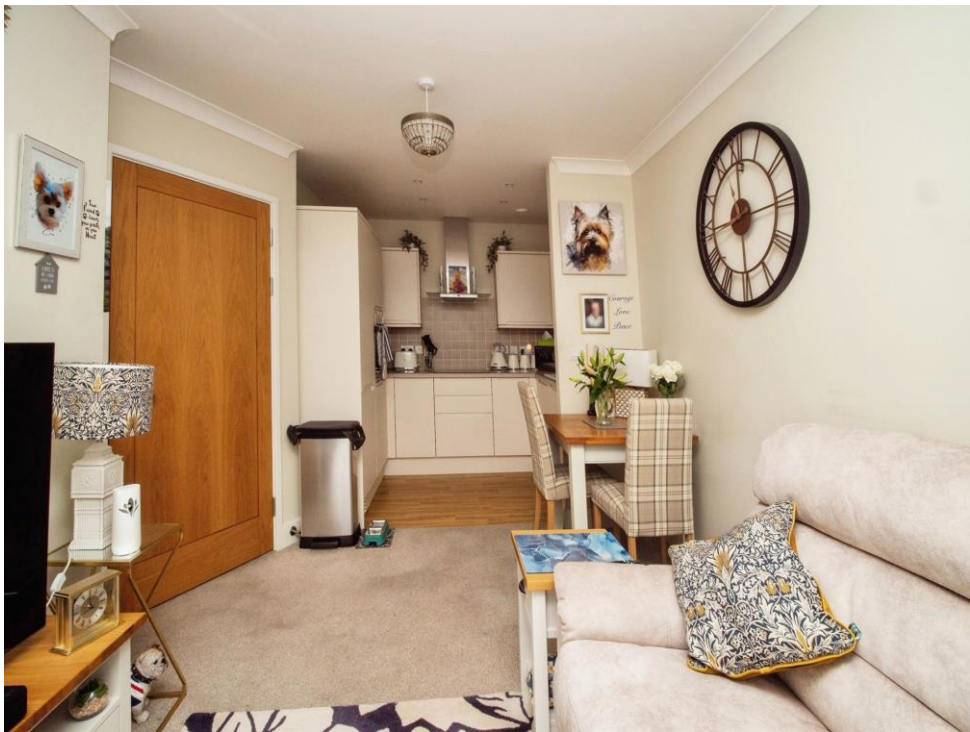
Wet Room

Door leading from the hallway to a part tiled shower room, with an electric radiator, a WC, a shower, a wash hand basin and an extractor fan.

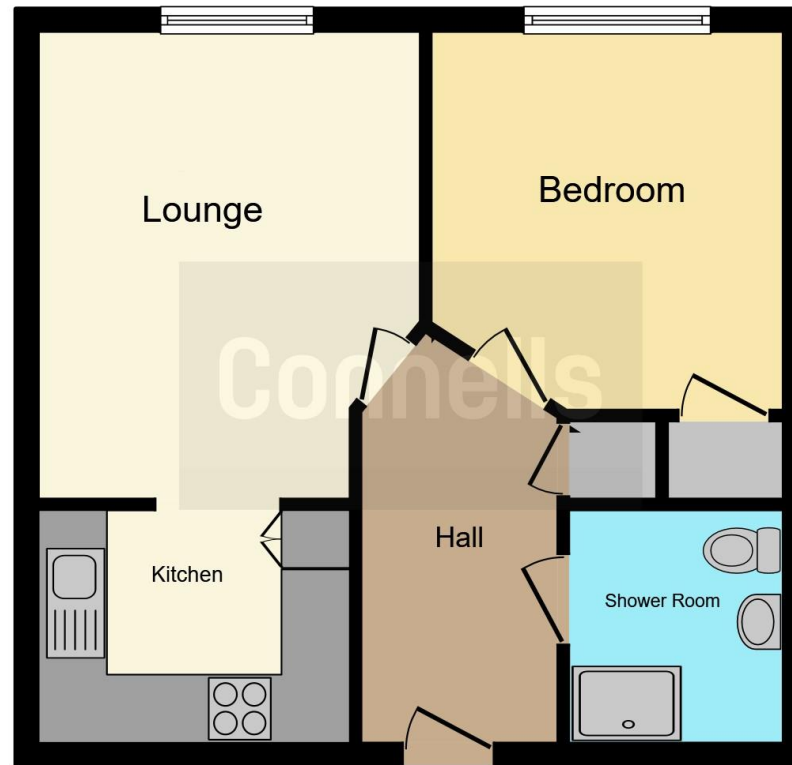
Outside

Access to communal gardens and a roof top terrace with ample seating and a range of pots, offering far reaching views across town.









This floor plan is for illustrative purposes only. It is not drawn to scale. Any measurements, floor areas (including any total floor area), openings and orientation are approximate. No details are guaranteed, they cannot be relied upon for any purpose and they do not form part of any agreement. No liability is taken for any error, omission or misstatement. A party must rely upon its own inspection(s). Powered by www.focalagent.com

To view this property please contact Connells on

T 01305 266 755
E Dorchester@connells.co.uk

3 High West Street
DORCHESTER DT1 1UH

EPC Rating: Awaited

Tenure: Leasehold

view this property online connells.co.uk/Property/DCH308750

This is a Leasehold property with details as follows; Term of Lease 125 years from 01 Oct 2012. Should you require further information please contact the branch. Please Note additional fees could be incurred for items such as

1. MONEY LAUNDERING REGULATIONS Intending purchasers will be asked to produce identification documentation at a later stage and we would ask for your co-operation in order that there will be no delay in agreeing the sale. 2. These particulars do not constitute part or all of an offer or contract. 3. The measurements indicated are supplied for guidance only and as such must be considered incorrect. Potential buyers are advised to recheck measurements before committing to any expense. 4. We have not tested any apparatus, equipment, fixtures, fittings or services and it is in the buyers interest to check the working condition of any appliances.

Connells Residential is registered in England and Wales under company number 1489613, Registered Office is Cumbria House, 16-20 Hockliffe Street, Leighton Buzzard, Bedfordshire, LU7 1GN. VAT Registration Number is 500 2481 05.

See all our properties at www.connells.co.uk | www.rightmove.co.uk | www.zoopla.co.uk

Property Ref: DCH308750 - 0003

