



**Connells**

Victoria Street  
Shaftesbury





### Property Description

In the centre of Shaftesbury this property is not to be missed within easy walking distance of all the amenities Shaftesbury has to offer. A detached property with front and rear gardens, lounge, kitchen, separate dining room and shower room on the ground floor. Upstairs are the three bedrooms and main bathroom and outside are the mature gardens to the front and rear.

#### Entrance Hall

As you enter the property there is a spacious hall with stairs leading to the first floor.

#### Lounge

12' x 11' 10" ( 3.66m x 3.61m )

Bay window to the front and window to the side with a wood burner and a radiator.

#### Dining Room

12' x 12' ( 3.66m x 3.66m )

Windows to the rear and side, fireplace which could be opened up with a serving hatch from the kitchen and a radiator.

#### Kitchen

12' x 10' 5" ( 3.66m x 3.17m )

Window to the side, fitted kitchen with wall and base units, space for an under counter fridge, electric oven and hob and a serving hatch to the dining room.

#### Shower Room

7' 1" x 5' 7" ( 2.16m x 1.70m )

Downstairs shower room with a shower cubicle, WC and wash hand basin.

#### Landing

13' 10" x 11' 3" ( 4.22m x 3.43m )

Spacious landing with doors to the three bedrooms and bathroom.



### Bedroom One

12' x 11' 10" ( 3.66m x 3.61m )  
Bay window to the front and window to the side and a radiator.

### Bedroom Two

12' 1" x 12' ( 3.68m x 3.66m )  
Windows to the side and rear and a radiator.

### Bedroom Three

10' 4" x 7' 11" ( 3.15m x 2.41m )  
Window to the front and a radiator.

### Bathroom

7' 2" x 5' 7" ( 2.18m x 1.70m )  
Window to the rear, bath, WC and a wash hand basin.

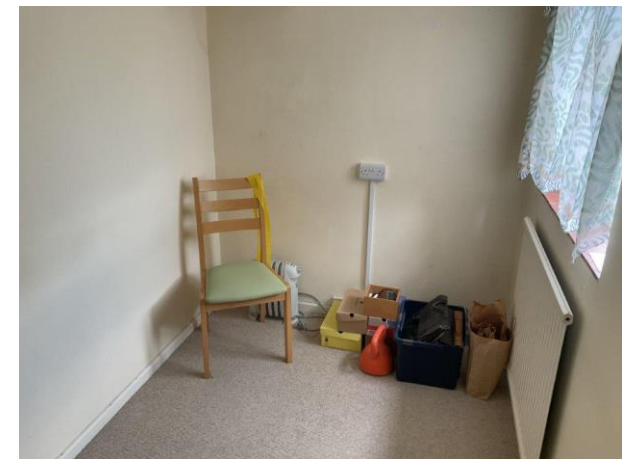
### Front Garden

To the front is a large mature garden with a path leading to the front door, flower beds and lawn to either side.

### Rear Garden

To the rear the garden is laid to patio with flower beds and plants to the side.





To view this property please contact Connells on

**T 01747 854 001**  
**E [shaftesbury@connells.co.uk](mailto:shaftesbury@connells.co.uk)**

34 High Street  
SHAFTESBURY SP7 8JG

EPC Rating: D    Council Tax  
Band: D

Tenure: Freehold

**view this property online [connells.co.uk/Property/SFT306057](https://connells.co.uk/Property/SFT306057)**



1. MONEY LAUNDERING REGULATIONS Intending purchasers will be asked to produce identification documentation at a later stage and we would ask for your co-operation in order that there will be no delay in agreeing the sale. 2. These particulars do not constitute part or all of an offer or contract. 3. The measurements indicated are supplied for guidance only and as such must be considered incorrect. Potential buyers are advised to recheck measurements before committing to any expense. 4. We have not tested any apparatus, equipment, fixtures, fittings or services and it is in the buyers interest to check the working condition of any appliances.

Connells Residential is registered in England and Wales under company number 1489613, Registered Office is Cumbria House, 16-20 Hockliffe Street, Leighton Buzzard, Bedfordshire, LU7 1GN. VAT Registration Number is 500 2481 05.

**See all our properties at [www.connells.co.uk](http://www.connells.co.uk) | [www.rightmove.co.uk](http://www.rightmove.co.uk) | [www.zoopla.co.uk](http://www.zoopla.co.uk)**

Property Ref: SFT306057 - 0004