



**Connells**

Homefield  
Shaftesbury





### Property Description

A three bedroom spacious detached bungalow with lounge, dining room, conservatory and utility room. Three good sized bedrooms and bathroom. Outside there is a driveway, carport and garage. Mature gardens to the front and rear. With NO ONWARD CHAIN this is a property not to be missed.

#### Entrance Porch

Double glazed door to the side.

#### Entrance Hall

Coat cupboard, radiator and access to the loft which has a ladder and light.

#### Lounge

14' 6" x 12' 8" ( 4.42m x 3.86m )

Double glazed window to the front, gas fire place, radiator and wall lights.

#### Dining Room

9' x 9' ( 2.74m x 2.74m )

Double glazed window to the side, patio doors to the garden and a radiator.

#### Conservatory

11' 8" x 8' 8" ( 3.56m x 2.64m )

Double glazed conservatory with radiator and wall lights.

## Kitchen

14' 4" max x 13' 3" max ( 4.37m max x 4.04m max )

Fitted kitchen with wall and base units, breakfast bar, space for an under counter fridge/freezer, double oven and gas hob and a sink and drainer.

## Utility Room

10' 9" x 7' 9" ( 3.28m x 2.36m )

Door to the side, space for a fridge/freezer, plumbing for a washing machine and a radiator.

## Bedroom One

12' 3" max x 10' 1" ( 3.73m max x 3.07m )

Double glazed window to the rear and a radiator.

## Bedroom Two

12' 9" x 10' max ( 3.89m x 3.05m max )

Double glazed window to the rear and a radiator.

## Bedroom Three

11' 3" x 8' 2" max ( 3.43m x 2.49m max )

Double glazed window to the front, radiator and an airing cupboard with radiator.

## Bathroom

Double glazed window to the side, bath with mixer taps and electric shower over, wash hand basin with vanity unit, WC and a towel rail.

## Front Garden

To the front the garden is laid to lawn with mature flower beds, gate to the side and a carport.

## Garage

17' 9" max x 8' 9" max ( 5.41m max x 2.67m max )

Electric garage door and a door to the side.

## Rear Garden

To the rear there is a well established garden which is laid to lawn with patio seating areas, greenhouse and mature shrubs.



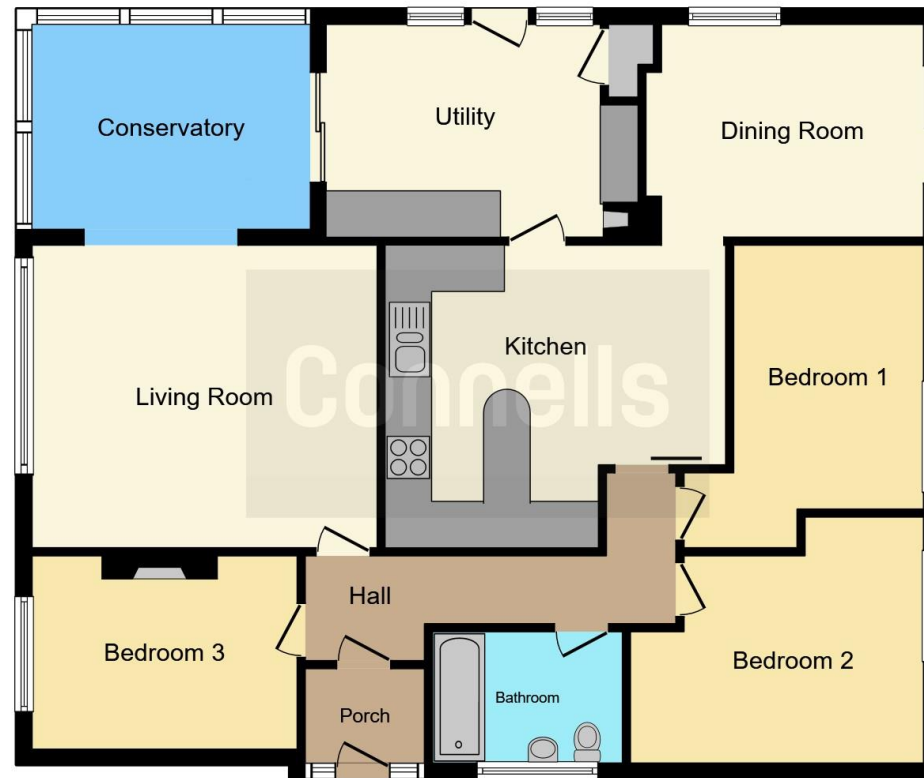












This floor plan is for illustrative purposes only. It is not drawn to scale. Any measurements, floor areas (including any total floor area), openings and orientation are approximate. No details are guaranteed, they cannot be relied upon for any purpose and they do not form part of any agreement. No liability is taken for any error, omission or misstatement. A party must rely upon its own inspection(s). Powered by [www.focalagent.com](http://www.focalagent.com)

To view this property please contact Connells on

**T 01747 854 001**  
**E [shaftesbury@connells.co.uk](mailto:shaftesbury@connells.co.uk)**

34 High Street  
 SHAFTESBURY SP7 8JG

EPC Rating: D Council Tax  
 Band: D

Tenure: Freehold

**view this property online [connells.co.uk/Property/SFT305842](http://connells.co.uk/Property/SFT305842)**



1. MONEY LAUNDERING REGULATIONS Intending purchasers will be asked to produce identification documentation at a later stage and we would ask for your co-operation in order that there will be no delay in agreeing the sale. 2. These particulars do not constitute part or all of an offer or contract. 3. The measurements indicated are supplied for guidance only and as such must be considered incorrect. Potential buyers are advised to recheck measurements before committing to any expense. 4. We have not tested any apparatus, equipment, fixtures, fittings or services and it is in the buyers interest to check the working condition of any appliances.

Connells Residential is registered in England and Wales under company number 1489613, Registered Office is Cumbria House, 16-20 Hockliffe Street, Leighton Buzzard, Bedfordshire, LU7 1GN. VAT Registration Number is 500 2481 05.

**See all our properties at [www.connells.co.uk](http://www.connells.co.uk) | [www.rightmove.co.uk](http://www.rightmove.co.uk) | [www.zoopla.co.uk](http://www.zoopla.co.uk)**

Property Ref: SFT305842 - 0003