



Connells

Kingfisher Littledown
Shaftesbury



Property Description

This beautifully presented home is located in the popular Blackmore Down development in the popular town of Shaftesbury. The ground floor comprises of entrance hall, a large lounge, the kitchen/diner includes built-in appliances and French doors to the rear garden and a utility and cloakroom. Upstairs are four bedrooms with ensuite to the master bedroom and family bathroom.

The property includes a number of upgrades including: downlights, kitchen appliances and work-tops plus the addition of an island, flooring, extended patio and EV charger.

Entrance Hall

Ceramic wood effect tiling, stairs to the first floor and an under stairs cupboard.

Cloakroom

WC, wash hand basin, radiator and ceramic wood effect floor tiles.

Lounge

14' 1" x 10' (4.29m x 3.05m)

Good sized lounge with double glazed bay window to the front, fireplace and a radiator.

Kitchen / Diner

21' 6" x 12' 8" (6.55m x 3.86m)

Double glazed patio doors and windows to the rear, fitted kitchen with granite worktops and soft close cupboards and drawers, downlights, granite worktops, island, Siemens appliances including electric double oven, induction hob and dishwasher, storage cupboard, radiator and door leading into the garage.

Utility Room

Sink, plumbing for a washing machine and a space for a tumble dryer.

Bedroom One

15' 1" x 10' 8" (4.60m x 3.25m)

Double glazed bay window to the front and a radiator.

Ensuite

Double glazed window to the front, shower cubicle and a wash hand basin.

Bedroom Two

13' 7" x 9' 9" (4.14m x 2.97m)

Double glazed window to the front and a radiator.

Bedroom Three

11' 8" x 10' 8" (3.56m x 3.25m)

Double glazed window to the rear, wardrobes and a radiator.

Bedroom Four

9' 10" x 9' 10" (3.00m x 3.00m)

Double glazed window to the rear and a radiator.

Bathroom

Double glazed window to the rear. bath with a shower over, WC, wash hand basin, tiled flooring and a heated towel rail.

Front Garden

To the front there is driveway parking for two cars with a lawn area, path to the front door and side gate giving access to the EV charger and rear garden.

Garage

19' 2" x 9' 9" (5.84m x 2.97m)

Up and over door, electricity and an internal door to the property.

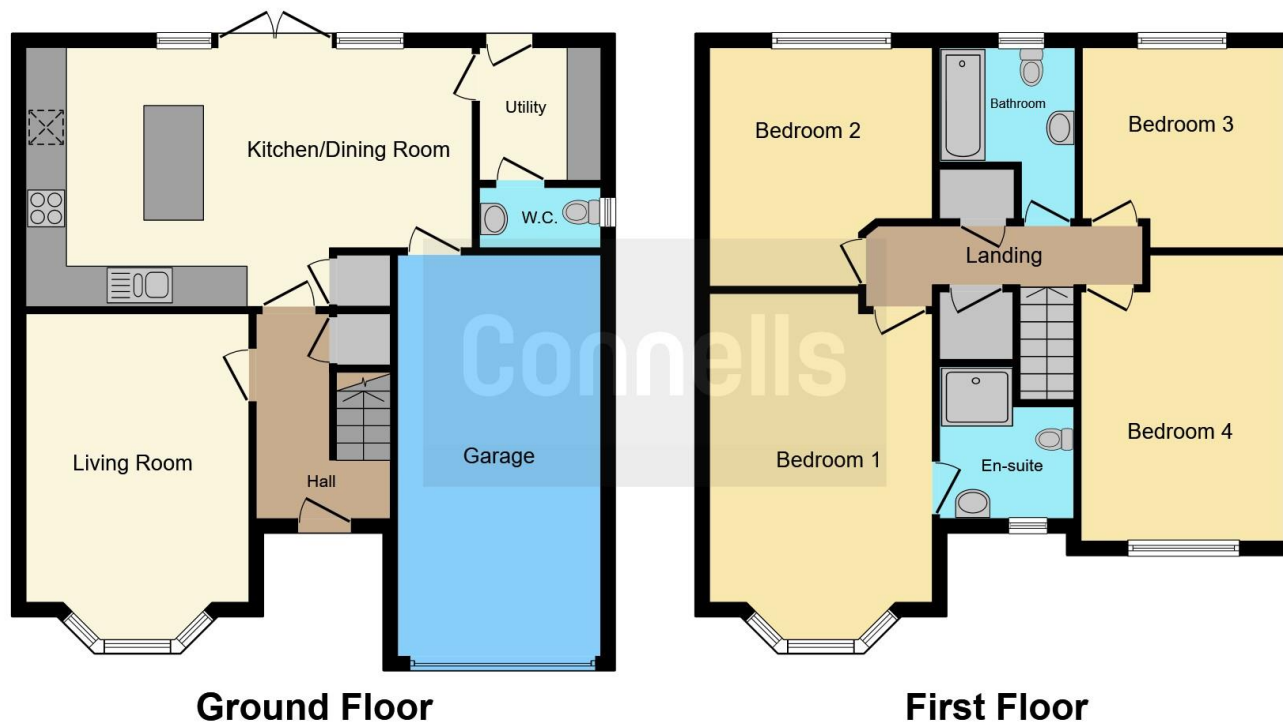
Rear Garden

To the rear garden is landscaped for ease of maintenance with patio seating area and the remainder laid to lawn.









This floor plan is for illustrative purposes only. It is not drawn to scale. Any measurements, floor areas (including any total floor area), openings and orientation are approximate. No details are guaranteed, they cannot be relied upon for any purpose and they do not form part of any agreement. No liability is taken for any error, omission or misstatement. A party must rely upon its own inspection(s). Powered by www.focalagent.com

To view this property please contact Connells on

T 01747 854 001
E shaftesbury@connells.co.uk

34 High Street
 SHAFTESBURY SP7 8JG

EPC Rating: B

Tenure: Freehold

view this property online connells.co.uk/Property/SFT306004



1. MONEY LAUNDERING REGULATIONS Intending purchasers will be asked to produce identification documentation at a later stage and we would ask for your co-operation in order that there will be no delay in agreeing the sale. 2. These particulars do not constitute part or all of an offer or contract. 3. The measurements indicated are supplied for guidance only and as such must be considered incorrect. Potential buyers are advised to recheck measurements before committing to any expense. 4. We have not tested any apparatus, equipment, fixtures, fittings or services and it is in the buyers interest to check the working condition of any appliances.

Connells Residential is registered in England and Wales under company number 1489613, Registered Office is Cumbria House, 16-20 Hockliffe Street, Leighton Buzzard, Bedfordshire, LU7 1GN. VAT Registration Number is 500 2481 05.

See all our properties at www.connells.co.uk | www.rightmove.co.uk | www.zoopla.co.uk

Property Ref: SFT306004 - 0002