



**Connells**

Sweetmans Road  
Shaftesbury





### Property Description

This is a THREE bedroom mid-terrace property. The property has been renovated throughout to a high standard. Boasting a MASTER EN-SUITE and a conservatory for additional living space.

#### Entrance Hall

Double glazed door to front, stairs leading to the first floor, radiator.

#### Cloakroom

Wash hand basin, low level WC, heated towel rail.

#### Lounge

15' 11" x 11' 5" ( 4.85m x 3.48m )

Double glazed window to rear, double glazed french doors to conservatory, understair cupboard, radiator, television aerial point.

#### Kitchen/ Diner

18' 9" max x 9' 11" max ( 5.71m max x 3.02m max )

Double glazed window to front. fitted kitchen comprising of wall and base units, Work surface incorporating stainless steel sink and drainer, Electric oven and hob, overhead cookerhood, television aerial point, integrated washing machine and dishwasher, integrated fridge and freezer, central heating boiler, radiator.

#### Conservatory

14' 4" x 9' 9" ( 4.37m x 2.97m )

Constructed of UPVC, double glazed windows to side and rear, radiator.

#### Landing

Stairs from entrance hall, Loft access.

### **Bedroom One**

12' 5" max x 9' 2" max ( 3.78m max x 2.79m max )

Double glazed window to rear, built in wardrobes, radiator, television aerial point.

### **Ensuite**

Shower cubicle, wash hand basin, low level WC.

### **Bedroom Two**

9' 2" x 9' 2" ( 2.79m x 2.79m )

Double glazed window to front, radiator.

### **Bedroom Three**

8' 10" x 7' 10" ( 2.69m x 2.39m )

Double glazed window to rear, radiator, television aerial point.

### **Bathroom**

Double glazed window to front, bath with mixer taps, low level WC, wash hand basin, tiling to all splash prone areas.

### **Outside**

#### **Front Garden**

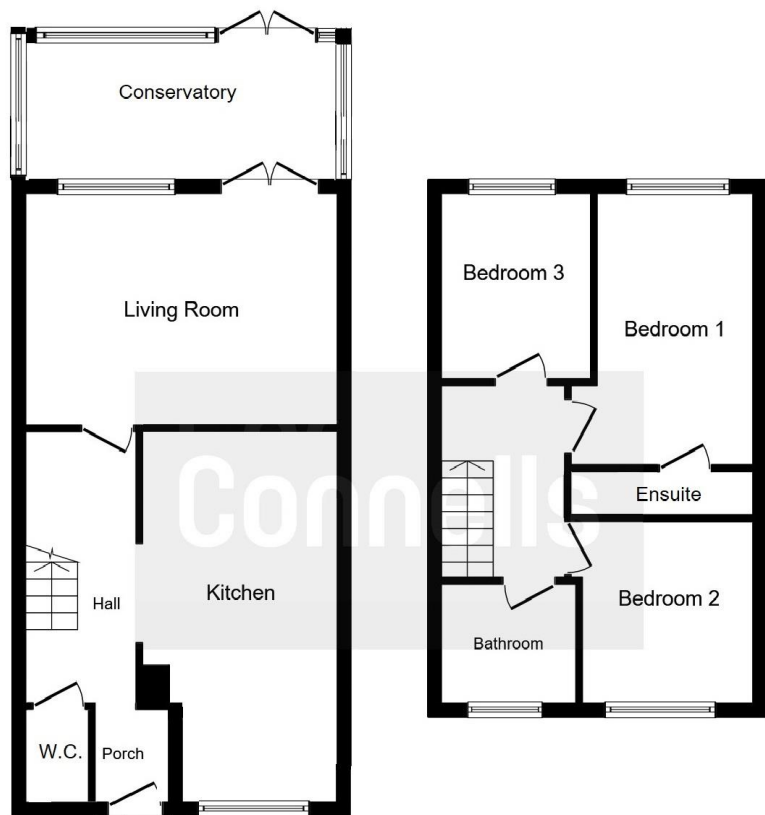
Fully enclosed with concrete path to front door and laid to gravel.

#### **Rear Garden**

Fully enclosed with patio area. seeded lawn area.







**Ground Floor**

**First Floor**

This floor plan is for illustrative purposes only. It is not drawn to scale. Any measurements, floor areas (including any total floor area), openings and orientation are approximate. No details are guaranteed, they cannot be relied upon for any purpose and they do not form part of any agreement. No liability is taken for any error, omission or misstatement. A party must rely upon its own inspection(s).  
Plan produced for Connells. Powered by www.focalagent.com



To view this property please contact Connells on

**T 01747 854 001**  
**E [shaftesbury@connells.co.uk](mailto:shaftesbury@connells.co.uk)**

34 High Street  
SHAFTESBURY SP7 8JG

**EPC Rating: C**

**view this property online [connells.co.uk/Property/SFT305979](https://www.connells.co.uk/Property/SFT305979)**

Tenure: Freehold



1. MONEY LAUNDERING REGULATIONS Intending purchasers will be asked to produce identification documentation at a later stage and we would ask for your co-operation in order that there will be no delay in agreeing the sale. 2. These particulars do not constitute part or all of an offer or contract. 3. The measurements indicated are supplied for guidance only and as such must be considered incorrect. Potential buyers are advised to recheck measurements before committing to any expense. 4. We have not tested any apparatus, equipment, fixtures, fittings or services and it is in the buyers interest to check the working condition of any appliances.

Connells Residential is registered in England and Wales under company number 1489613, Registered Office is Cumbria House, 16-20 Hockliffe Street, Leighton Buzzard, Bedfordshire, LU7 1GN. VAT Registration Number is 500 2481 05.

**See all our properties at [www.connells.co.uk](https://www.connells.co.uk) | [www.rightmove.co.uk](https://www.rightmove.co.uk) | [www.zoopla.co.uk](https://www.zoopla.co.uk)**

Property Ref: SFT305979 - 0004